



GRAZER GROUND MOWERS

TABLE OF CONTENTS

WIRING DIAGRAM (BEFORE 1989)	A3
WIRING DIAGRAM (1989 AND AFTER)	A4
ENGINE	A5-A6
TRANSMISSION & CHAIN DRIVES	A7-A8
BODY	A10-A11
SEAT LID (1989 AND AFTER)	A12
BASE	A13
TAIL WHEEL	A14
DECALS	B1

Models

GI250
(BEFORE S/N 02-09-0248)
(CHAIN DRIVE MOWERS)

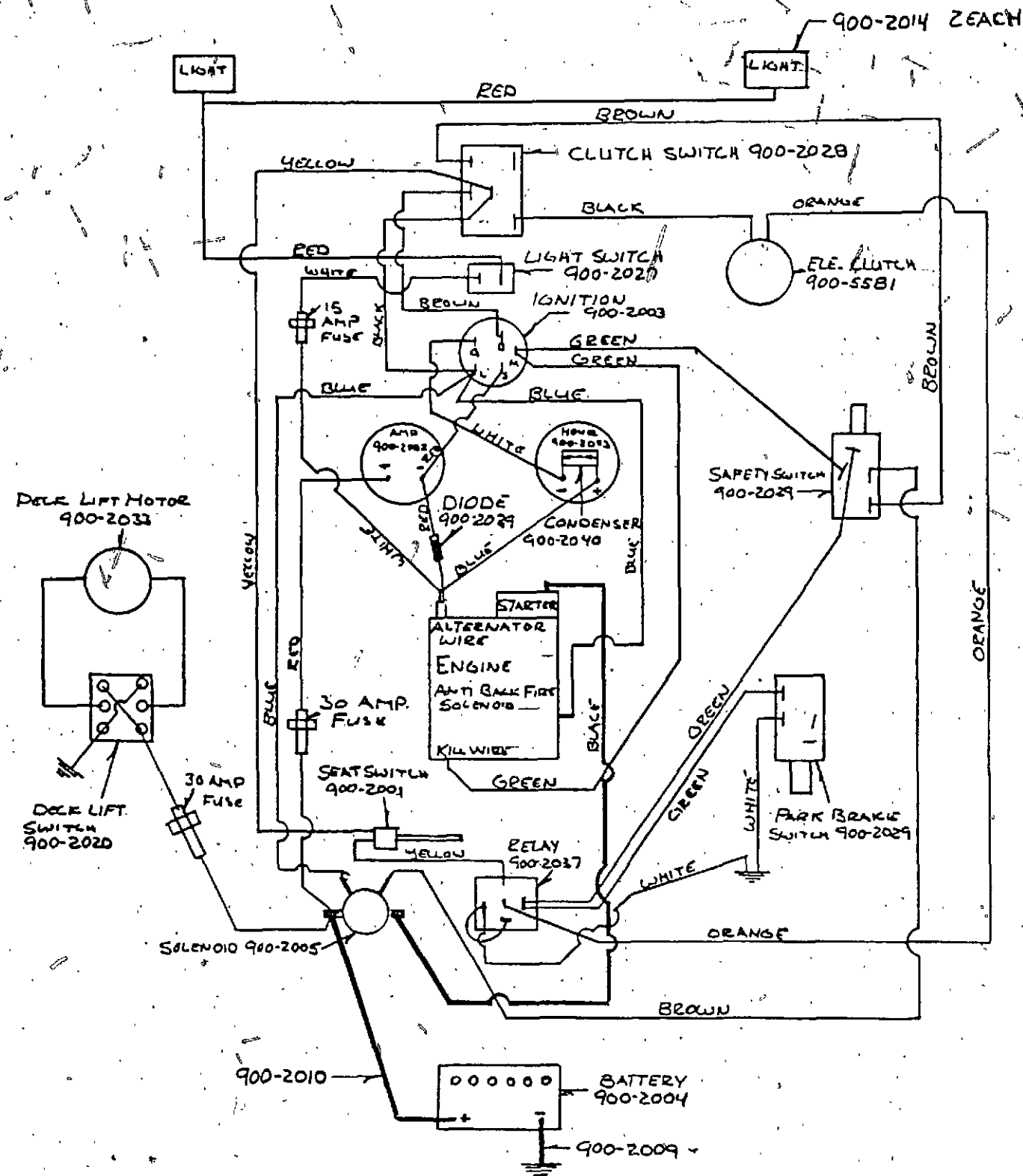
Parts List



Grazer Division, Ingersoll Equipment Company
Winneconne, WI 54986

WIRING DIAGRAM

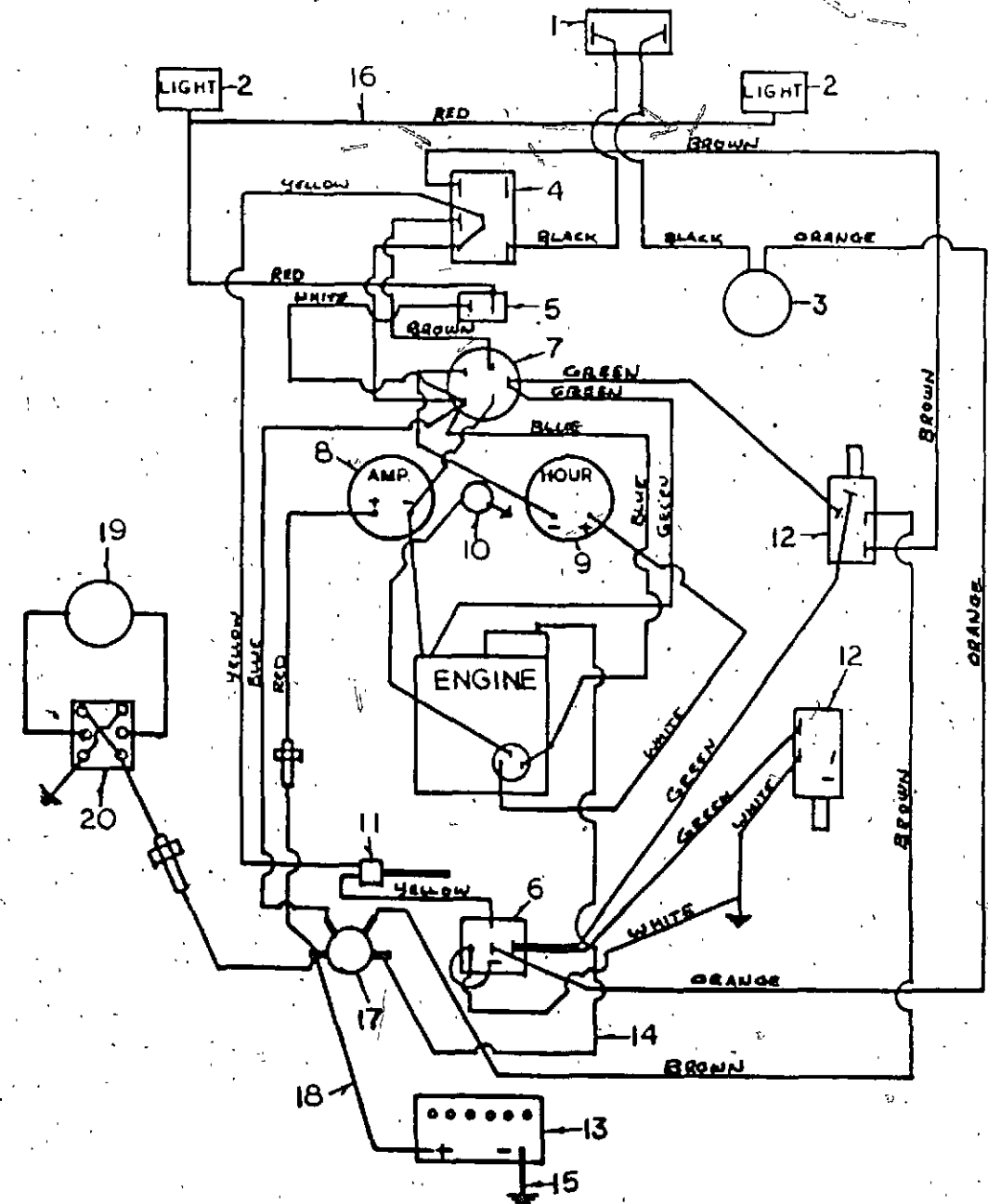
BEFORE 1989



WIRING DIAGRAM

1989 AND AFTER

Item No.	Description	Qty.	Item No.	Description	Qty.
1	G9002044 10 Amp Circuit Breaker	1	12	G9002029 Safety Switch	2
2	G9002014 Headlight Assembly	2	13	G9002060 Battery	1
3	G9005581 Electric Clutch Assembly	1	14	G9002010 Starter Wire	1
4	G9002028 PTO Clutch Switch	1	15	G9002009 Ground Wire	1
5	G9002027 Light Switch	1	16	G9002032 Light to Switch Wire	1
6	G9002037 Relay	1	17	G9002005 Solenoid	1
7	G9002003 Ignition Switch	1	18	G9002010 Starter to Solenoid Wire	1
8	G9002002 Amp Gauge	1	19	G9002033 Electric Lift Actuator	-
9	G9002023 Hour Meter	1	20	G9002020 3 Position Deck Lift Switch	-
10	G9002041 Oil Light	1		G9002034 Wiring Harness	1
11	G9002001 Seat Switch	1			



BRIGGS & STRATTON ENGINE PARTS

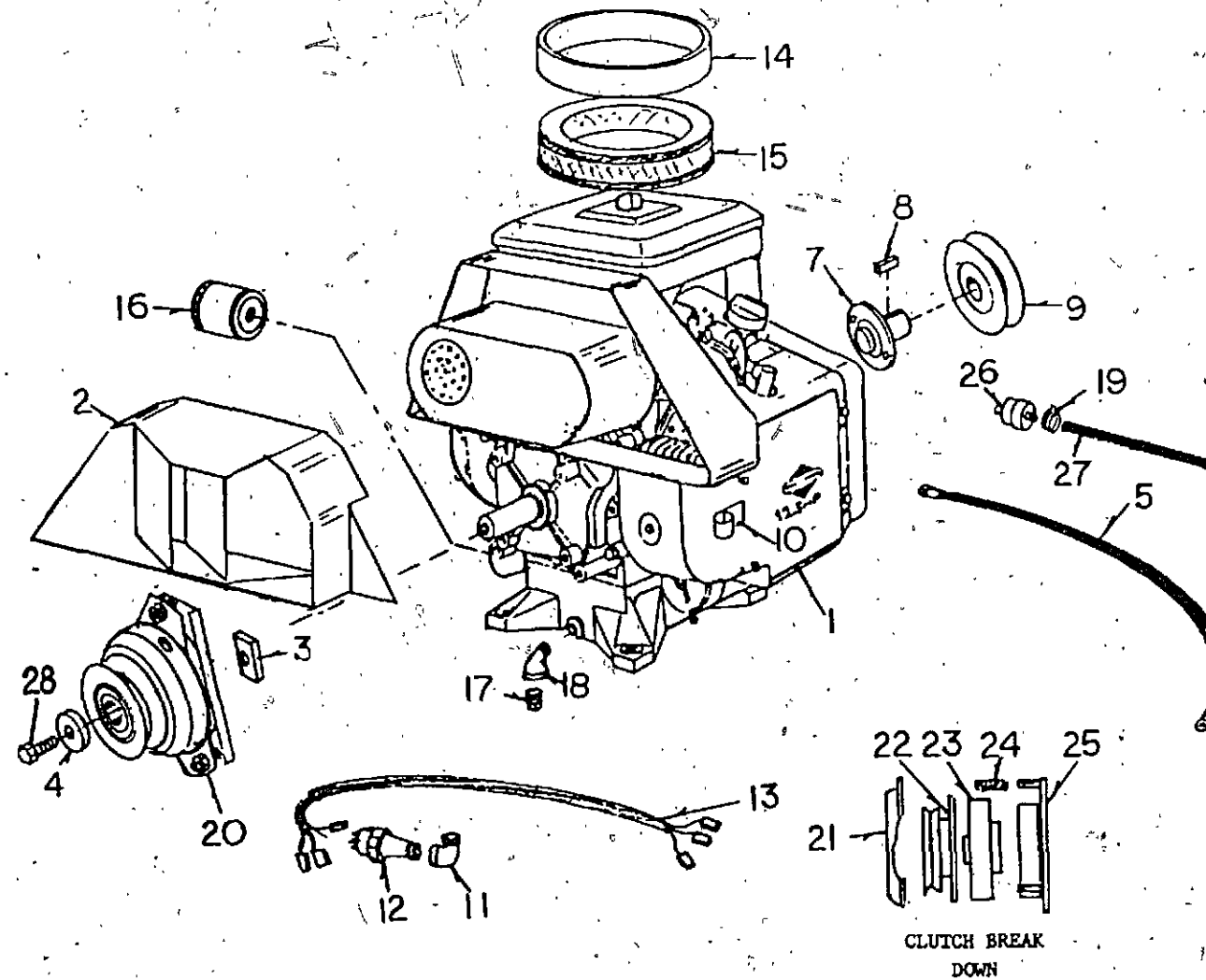
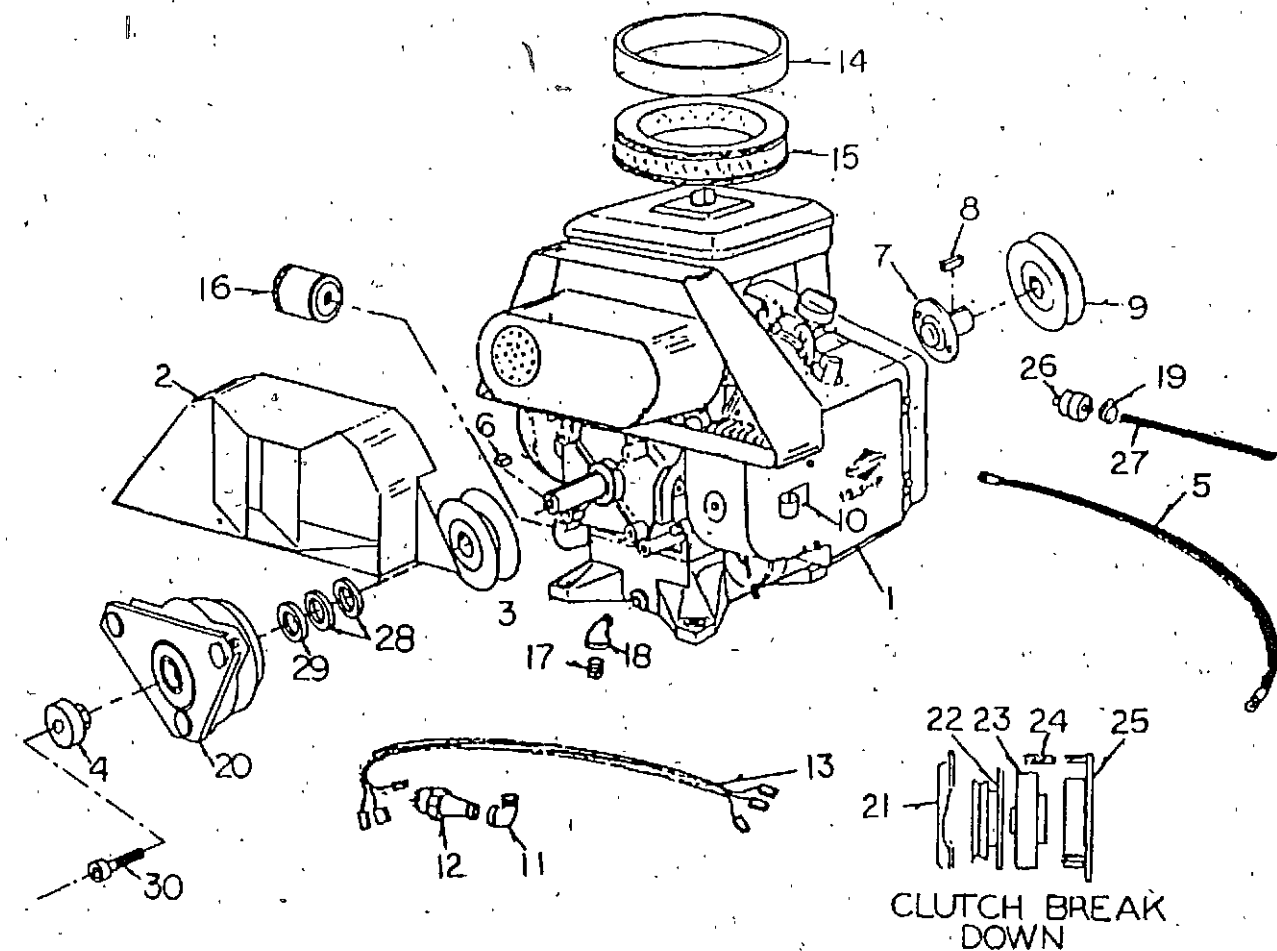
(Serial Numbers Prior to 09-08-0945)

BRIGGS & STRATTON ENGINE PARTS

(Serial Numbers After 09-08-0944)

Item	Part No.	Description	Qty.	Item	Part No.	Description	Qty.
1		Briggs & Stratton Twin, 12.5 HP	1	17	13002	Plug, 3/8"	1
2	G1110001	Air Duct	1	18	11102	Street Elbow, 3/8"	1
3	G9002527	Pulley, Transmission Drive	1	19	G9005525	Fuel Line Clamp	4
4	G1110020	Electric Clutch Retainer	1	20	G9005581	Clutch, Complete	1
5	G9002010	Starter Cable	1	21	G9005582	Clutch Brake	-
6	4062.25	Key, 1/4" x 1/4" x 1/4"	1	22	G9005583	Clutch Armature	-
7	G1000013	Stub Shaft	1	23	G9005584	Clutch Rotor	-
8	40621	Key, 1/4" x 1/4" x 1"	1	24	G9005586	Spring & Nut Set (3 Ea.)	-
9	G9002503	Pulley	1	25	G9005585	Clutch Coil	1
10	G1000021	Starter Cable Retainer	1	26	G9005514	Fuel Filter	1
11	11108	Street Elbow, 1/8" x 90°	1	27	G9005515	Fuel Line	1
12	G9005017	Oil Sending Unit	1	28	G9006001	Machine Washer, 1", 10 GA	2
13	G9002067	Wire Harness, Oil Sending Unit	1	29	G9006000	Machine Washer, 1", 14 GA	1
14	G9005008	Precleaner	1	30	31768H5C	Sockethead Capscrew, 3/8-24 x 1 3/4", GR5	1
15	G9005005	Air Cleaner Cartridge	1				
16	G9005022	Oil Filter	1				

Item	Part No.	Description	Qty.	Item	Part No.	Description	Qty.
1		Briggs & Stratton Twin, 12.5 HP	1	16	G9005022	Oil Filter	1
2	G1110001	Air Duct	1	17	13002	Plug, 3/8"	1
3	G1130010	Clutch Stop	2	18	11102	Street Elbow, 3/8"	1
4	G9005575	Clutch Retainer Washer	1	19	G9005525	Fuel Line Clamp	4
5	G9002010	Starter Cable	1	20	G9005581	Clutch, Complete	1
7	G1000013	Stub Shaft	1	21	G9005582	Clutch Brake	1
8	40621	Key, 1/4" x 1/4" x 1"	1	22	G9005583	Clutch Armature	1
9	G9002503	Pulley	1	23	G9005584	Clutch Rotor	1
10	G1000021	Starter Cable Retainer	2	24	G9005586	Spring & Nut Set (3 Ea.)	1
11	11108	Street Elbow, 1/8" x 90°	1	25	G9005585	Clutch Coil	1
12	G9005017	Oil Sending Unit	1	26	G9005514	Fuel Filter	1
13	G9002067	Wire Harness, Oil Sending Unit	1	27	G9005515	Fuel Line	1
14	G9005008	Precleaner	1	28	G9006001	Machine Washer, 1", 10 GA	1
15	G9005005	Air Cleaner Cartridge	1	29	G9006000	Machine Washer, 1", 14 GA	1
				30	31768H5C	Sockethead Capscrew, 3/8-24 x 1 3/4", GR5	3



TRANSMISSION & CHAIN DRIVES

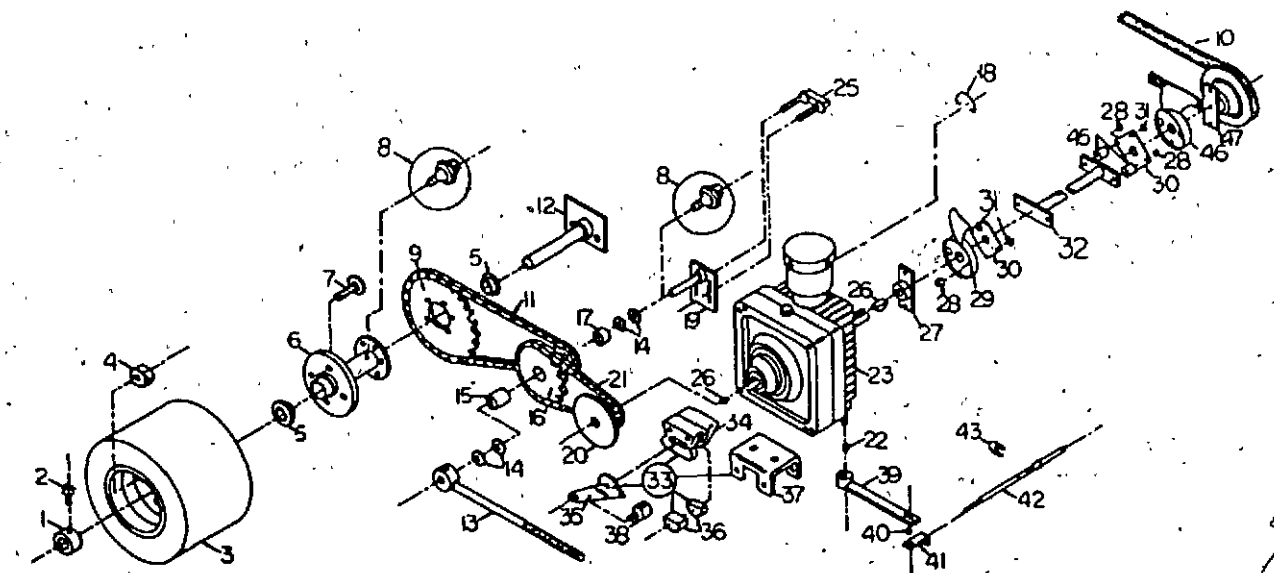
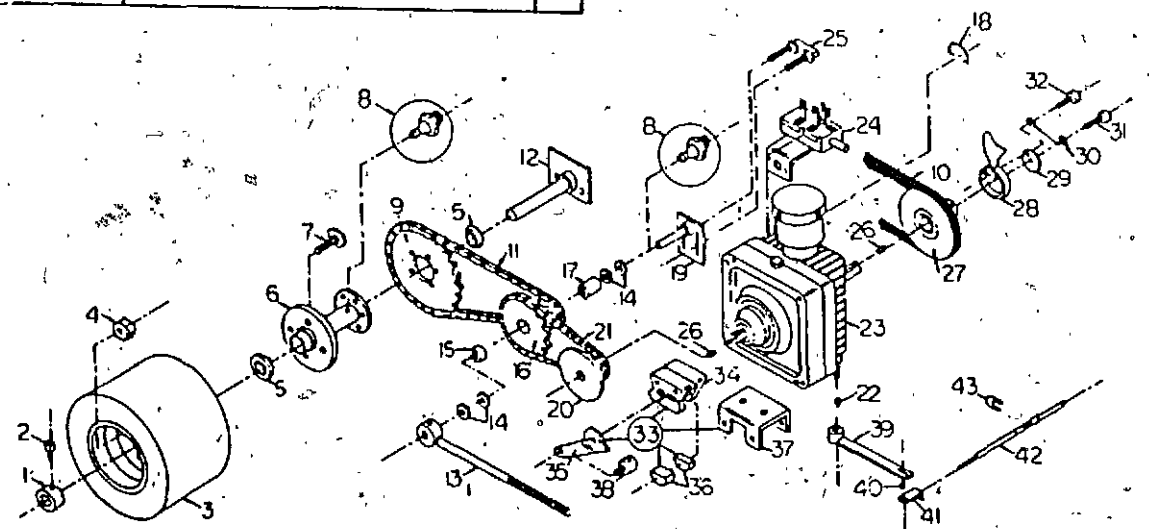
(Serial Numbers Prior to 09-08-0943)

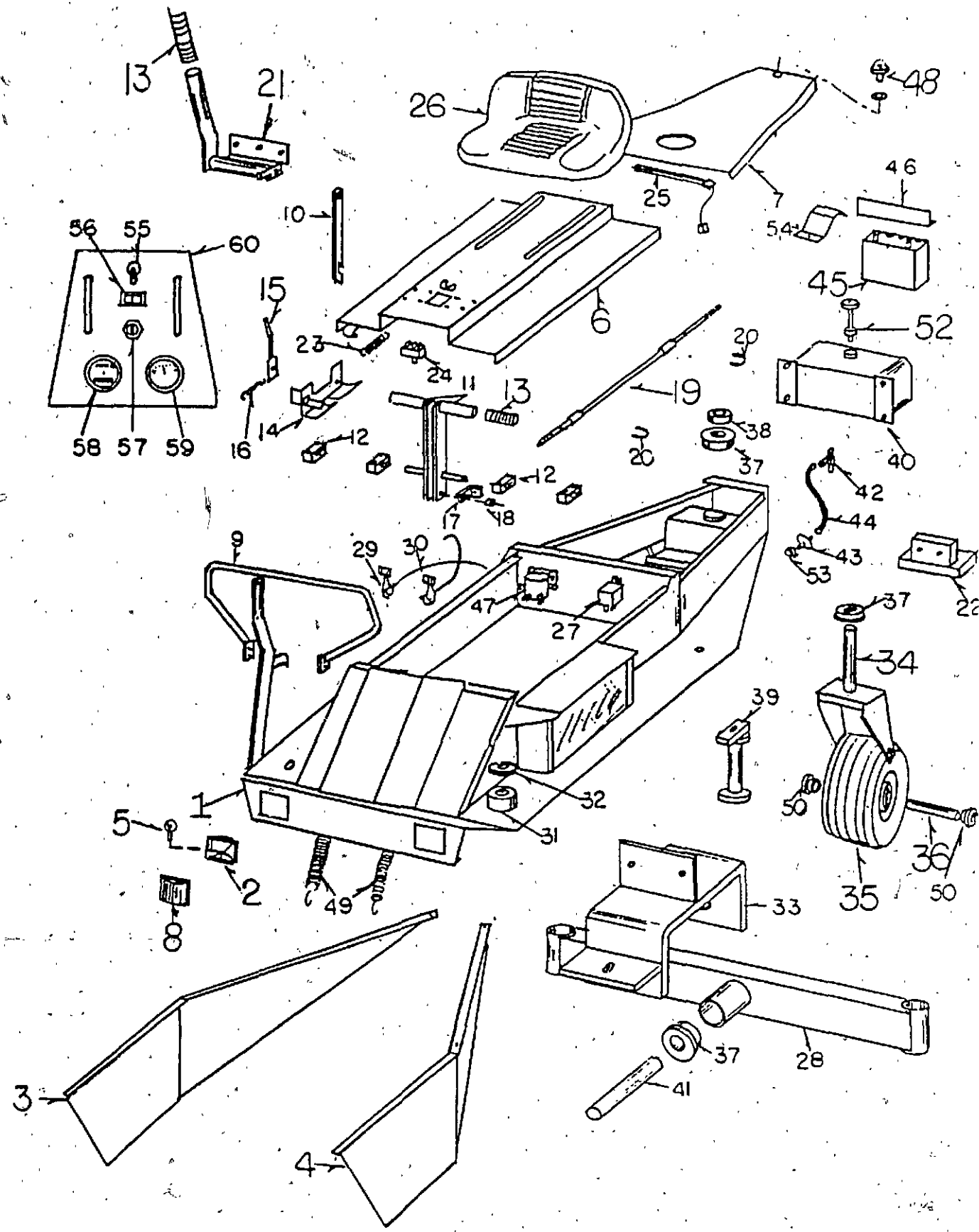
Item No.	Part No.	Description	Qty.	Item No.	Part No.	Description	Qty.
1	G9005510	Set Collar, 1"	2	22	41003	Woodruff Key, 1/8" x 3/8"	2
2	3901A2C G900411	Squarehead Setscrew, 5/16-18 x Drive Wheel, 16x6.50-8	2	23	G9004504	Transmission, LH (Shown)	1
3	G9004012 G9004021 G9004003	Drive Wheel Assy., 16 x 7.50-8 Drive Tire, 16 x 7.50-8 Rim, 8" x 5 1/2"	2		G9004505	Transmission, RH	1
4	G9006138	Lug Nut, 1/2-20	8		G9004523	Transmission Diaphragm	-
5	G9003501	Drive Wheel Bearing	4		G9004528	Seal Kit, Model 6	-
6	G9004009 G6000006 G9004033	Drive Wheel Hub (G1250) Wheel Hub Assy., Regular (Includes Items 5-9) Wheel Hub, Hill Climber (G1250H)	2		G9004529	Trans. Reservoir Kit, Model 6	-
7	G9006137	Lug Bolt, 1/2-20 x 1 1/4"	8	24	G9002072	Brake Switch	1
8	45051	Self-tapping Zerk, 1/4-28	4	25	G1000016	Bolt Bar	2
9	G9011502	Final Drive Sprocket, 40A 54	2	26	41006	Woodruff Key, 1/8" x 1/2"	4
10	G9003000	Transmission Belt, A36	2	27	G9002500	Transmission Pulley	2
11	G9001000 G9001015	Final Drive Chain (G1250) Final Drive Chain, Hill Climber (G1250H)	2	28	G9004501	Transmission Fan, LH	1
12	G1000001 G1200001	Drive Wheel Axle (G1250) Drive Wheel Axle, Hill Climber (G1250H)	2		G9004500	Transmission Fan, RH	1
13	G1000017	Support Collar	2	29	G9004509	Transmission Washer	2
14	G9006003	Machine Washer, 3/4", 10 GA	8	30	35001C	Lockwasher, 1/4"	4
15	G9003500	Idler Sprocket Bearing, 1/2"	2	31	31862H5C	Sockethead Capscrew, 1/4-20 x 1/2", GR5	2
16	G9011501 G9011501A	Idler Sprocket Idler Sprocket w/Bearings	2	32	31782H5C	Sockethead Capscrew, 1/4-28 x 1/2", GR5	2
17	G9003502	Idler Sprocket Bearing, 3/4"	2	33	G9005690	Brake Assembly, LH	1
18	G9004510	Transmission Dump Valve Clip	2		G9005691	Brake Assembly, RH	1
19	G1000002	Idler Sprocket Shaft	2	34	G9005587	Brake Caliper	-
20	G9011505	Transmission Sprocket w/Brake Disc	2	35	G9005565	Caliper Lever, LH	-
21	G9001001	Primary Drive Chain	2		G9005566	Caliper Lever, RH	-
				36	G9005567	Brake Pad (Set)	-
				37	G9005588	Caliper Bracket	-
				38	G1110014	Caliper Rod Collar	2
				39	G9004506	Transmission Arm, LH	1
				39	G9004507	Transmission Arm, RH	1
				40	G2000014	Cable End Bushing	2
				41	G2000013	Steering Cable End	2
				42	G9005502	Steering Cable	2
				43	G9005503	Steering Cable Clamp	2

TRANSMISSION & CHAIN DRIVES

(Serial Numbers After 09-08-0944)

Item No.	Part No.	Description	Qty.	Item No.	Part No.	Description	Qty.
1	G9005510	Set Collar, 1"	2		G9004505	Transmission, RH	1
2	3901A2C	Squarehead Setscrew, 5/16-18 x 1/2"	2		G9004523	Transmission Diaphragm	-
3	G9004012 G9004021 G9004003	Drive Wheel Assy., 16 x 7.50-8 Drive Tire, 16 x 7.50-8 Rim, 8" x 5 1/2"	2		G9004528	Seal Kit, Model 6	-
4	G9006138	Lug Nut, 1/2-20	8	24	G9004521	Pulley w/Drive Plate	1
5	G9003501	Drive Wheel Bearing	4	25	G1000016	Bolt Bar	2
6	G9004009 G6000006 G9006137	Drive Wheel Hub Wheel Hub Assy., Regular (Includes Items 5-9) Lug Bolt, 1/2-20 x 1 1/4"	2	26	41006	Woodruff Key, 1/8" x 1/2"	4
7	G9006137	Lug Bolt, 1/2-20 x 1 1/4"	8	27	G9004522	Hub w/Drive Plate	1
8	45051	Self-tapping Zerk, 1/4-28	4	28	G1110025	Bolt Spacer	4
9	G9011502	Final Drive Sprocket, 40A 54	2	29	G9004520	Fan, cw	1
10	G9003000	Transmission Belt, A36	1	30	G1110021	Drive Plate	2
11	G9001000	Final Drive Chain	2	31	G9006161	Washer, 1/4", 10 GA	6
12	G1000001	Drive Wheel Axle	2	32	G1110018	Cross Shaft	1
13	G1000017	Support Collar	2	33	G9005690	Brake Assembly, LH	1
14	G9006003	Machine Washer, 3/4", 10 GA	8		G9005691	Brake Assembly, RH	1
15	G9003500	Idler Sprocket Bearing, 1/2"	2	34	G9005587	Brake Caliper	-
16	G9011501 G9011501A	Idler Sprocket Idler Sprocket w/Bearings	2	35	G9005565	Caliper Lever, LH	-
17	G9003502	Idler Sprocket Bearing, 3/4"	2		G9005566	Caliper Lever, RH	-
18	G9004510	Transmission Dump Valve Clip	2	36	G9005567	Brake Pad (Set)	-
19	G1000002	Idler Sprocket Shaft	2	37	G9005588	Caliper Bracket	-
20	G9011505	Transmission Sprocket w/Brake Disc	2	38	G1110014	Caliper Rod Collar	2
21	G9001001	Primary Drive Chain	2	39	G9004506	Transmission Arm, LH	1
22	41003	Woodruff Key, 1/8" x 3/8"	2	39	G9004507	Transmission Arm, RH	1
23	G9004504	Transmission, LH (Shown)	1	40	G2000014	Cable End Bushing	2
				41	G2000013	Steering Cable End	2
				42	G9005502	Steering Cable	2
				43	G9005503	Steering Cable Clamp	2
				45	G1110022	Spacer	2
				46	G9004519	Fan, cw	1





Ref. No.	Part No.	Description	Ref. No.	Part No.	Description
1.	201-0000	Body	36.	200-0017A	Tail Wheel Axle(1600-1800)
2.	900-2026	Lamp	36.	230-0017	Tail Wheel Axle(1600C-1800C)
3.	201-0008	Fender R.H.	36.	200-0017	Tail Wheel Axle(1100-1250), Dual Tail Wheel Axle
4.	201-0007	Fender L.H.	37.	900-3503	Tail Wheel Fork Bearing
5.	900-2025	Bulb	38.	900-5510	Set Collar
6.	201-0004	Lid	39.	230-0006	Dual Tail Wheel Tube Block
7.	201-0009	Back Cover	40.	900-5533	Fuel Tank
8.	900-2024	Lens	41.	230-0008	Pivot Axle
9.	200-0007	Guard Rail	42.	900-5513	Fuel Tank Valve
10.	200-0008	Lid Prop	43.	900-5514	Fuel Filter
11.	200-0009	Steering Lever	44.	900-5515	Fuel Hose
12.	200-0010	Bearing Block, Steering Lever	45.	900-2004	Battery
13.	900-5500	Handle Grip	46.	200-0019	Hold Down
14.	201-0010	Lever Lock	47.	900-2005	Solenoid
15.	200-0012	Latch, Lever Lock	48.	900-5522	Dzus Fastener
16.	900-5501	Spring, Lever Lock	49.	900-5516	Deck Spring
17.	200-0013	Steering cable end	50.	900-3505	Tail Wheel Bearing,(3/4")
18.	200-0014	Bushing, cable end	51.	900-5523	Seat Spacer
19.	900-5502	Steering cable	52.	900-5561	Fuel Tank Cap
20.	900-5503	Clamp, steering cable	53.	900-5525	Fuel Line Clamp
21.	201-0011	Brake lever lock	54.	200-0021	Battery Post Protector
22.	230-0002	Tail Weight	55.	900-2028	Clutch Switch
23.	900-5562	Spring	56.	900-2027	Light Switch
24.	900-2029	Safety Switch	57.	900-2003	Ignition Switch
25.	900-2001	Seat Switch	58.	900-2023	Hour Meter
26.	900-5506	Seat	59.	900-2002	Amp Meter
27.	900-2037	Electric Cluth Relay	60.	201-0006	Dash Board
28.	230-0004	Dual Tail Wheel Axle			
29.	900-5605	Throttle Cable(18HP Kohler)			
29.	900-5595	Throttle Cable(11HP Briggs)			
29.	900-5507	Throttle Cable			
30.	900-5606	Choke Cable(18HP Kohler)			
30.	900-5596	Choke Cable(11HP Briggs)			
30.	900-5508	Choke Cable			
31.	900-5509	Rubber Body Mount			
32.	200-0015	Body Mount Washer			
33.	230-0005	Dual Tail Wheel Mt.			
34.	210-0001	Tail Wheel Fork (1600)(1800)			
34.	230-0001	Tail Wheel Fork (1600C)(1800C)			
34.	200-0016	Tail Wheel Fork (1100)(1250)			
34.	230-0007	Dual Tail Wheel Fork			
35.	900-4014	Tail Wheel Assy. (1600)(1800)			
35.	900-4017	Tail Wheel Assy. (1600C)(1800C)			
35.	900-4004	Tail Wheel Assy. (1100)(1250)			
35.	900-4010	Tail Wheel Assy.			

BODY

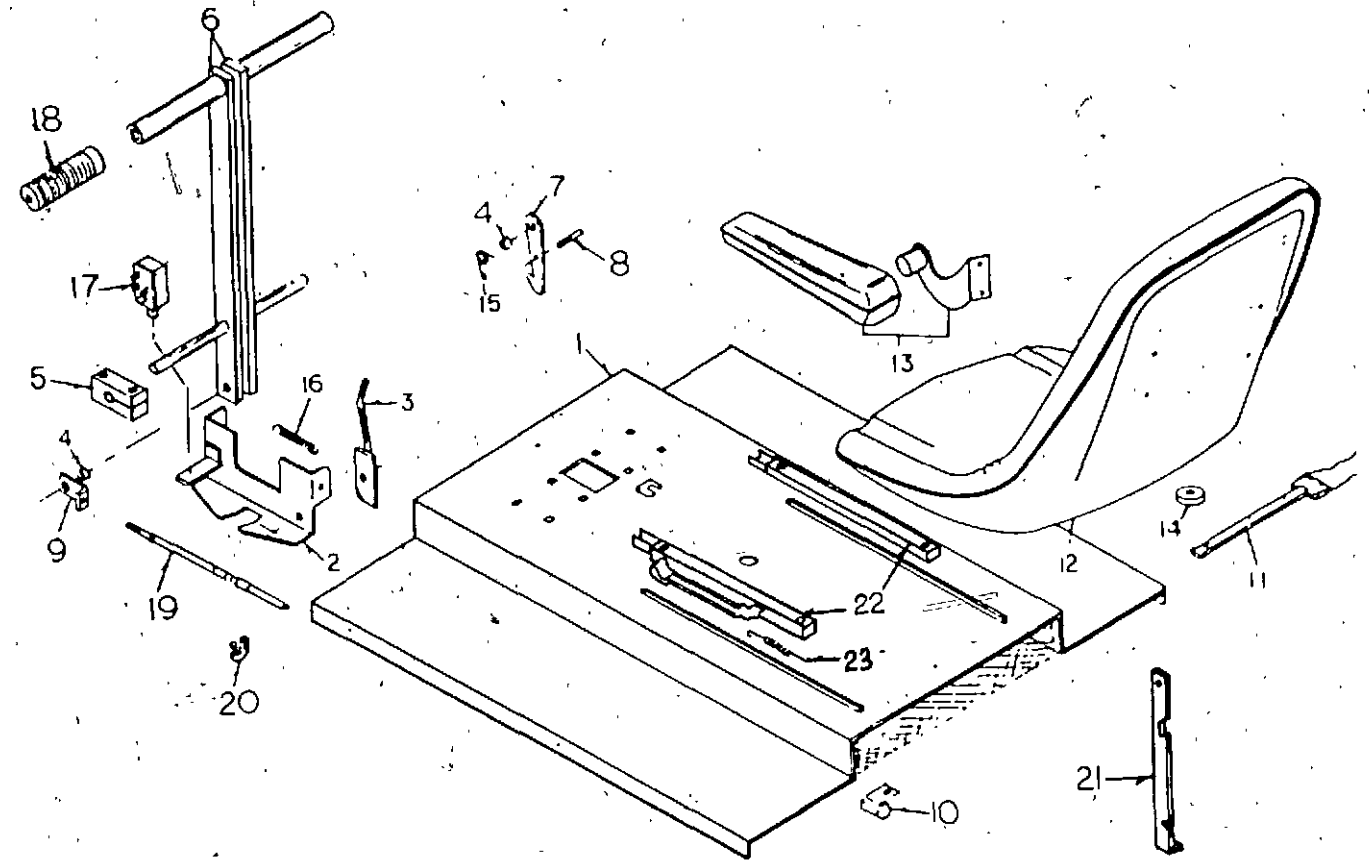
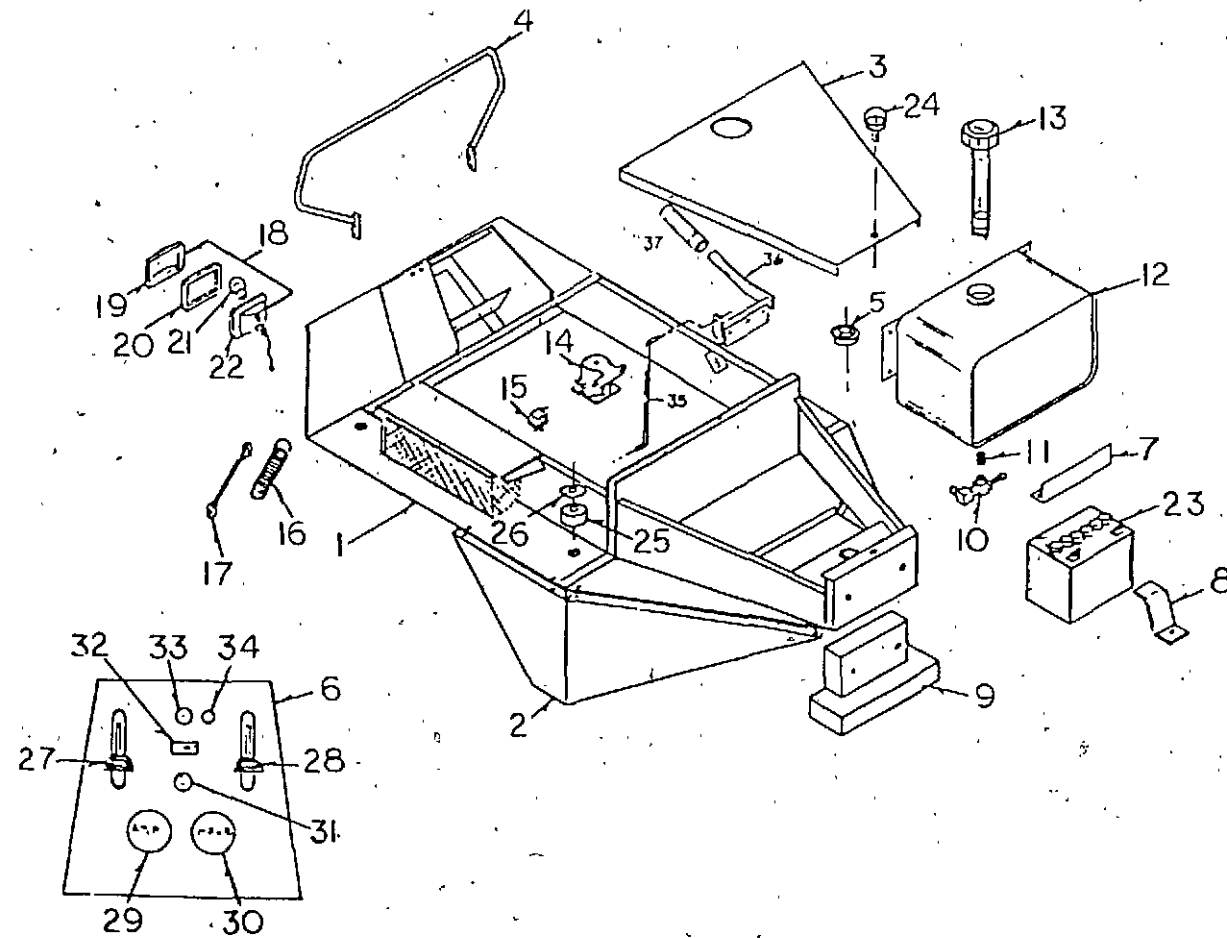
1989 AND AFTER

SEAT LID ASSEMBLY

1989 AND AFTER

Item	Part No.	Description	Qty.	Item	Part No.	Description	Qty.
1	G201000G	Body	1	18	G9002014	Light Assembly	2
2	G2010017G	Fender, RH (Shown) (G1250)	1	19	G9002024	Lens	-
	G2010013G	Fender, RH, Hill Climber (G1250H)	1	20	G9002068	Gasket	-
	G2010016G	Fender, LH (G1250)	1	21	G9002025	Bulb	-
	G2010012G	Fender, LH, Hill Climber (G1250H)	1	22	G9002026	Lamp	-
3	G2010009G	Back Cover	1	23	G9002060	Battery	1
4	G2000007	Guard Rail	1	24	G9005522	Dzus Fastener	1
5	G9003501	Bearing	2	25	G9005509	Rubber Body Mount	8
6	G2010006	Dashboard	1	26	G2000015	Body Mount Washer	4
7	G2000019	Hold Down, Battery	1	27	G9005508	Choke Cable	1
8	G2000021	Battery Post Protector	1	28	G9005605	Throttle Cable	1
9	G2300002	Tail Weight (Optional)	-	29	G9002002	Amp Meter	1
10	G9005513	Shutoff Valve, Fuel	1	30	G9002023	Hour Meter	1
11	9901	Nipple, 1/8" x Close	1	31	G9002003	Ignition Switch	1
12	G9005533	Fuel Tank	1	32	G9002027	Light Switch	1
13	G9005561	Fuel Tank Cap With Gauge	1	33	G9002028	Clutch Switch	1
14	G9002005	Solenoid	1	34	G9002041	Oil Light	1
15	G9002037	Relay	1	35	G1110016	Brake Rod	1
16	G9005516	Deck Spring	2	36	G2010011	Brake Lever Lock	1
17	G9005518	Deck Lift Cable	2	37	G9005500	Handle Grip	1

Item	Part No.	Description	Qty.	Item	Part No.	Description	Qty.
1	G2010004	Seat Lid	1	13	GDS13	Arm Rest Kit (Optional)	-
2	G2010010	Lever Lock	1	14	G9005523	Seat Spacer	4
3	G2000012	Latch, Lever Lock	1	15	G9005700	Seat Lid Latch Spring	1
4	G2000014	Bushing	5	16	G9005501	Lever Lock Spring	1
5	G2000010	Bearing Block	4	17	G9002029	Safety Switch	1
6	G2000009	Steering Lever	2	18	G9005500	Handle Grip	2
7	G2010015	Seat Lid Latch	1	19	G9005502	Steering Cable	2
8	G2010014	Seat Lid Latch Bolt	1	20	G9005503	Steering Cable Clamp	4
9	G2000013	Steering Cable End	4	21	G2000008	Lid Prop	1
10	G2010018	Seat Lid Harness Retainer	1	22	G9005813	Seat Rail (Pair)	1
11	G9002001	Seat Switch	1	23	G9005767	Seat Spring	1
12	G9005597	Seat	1				

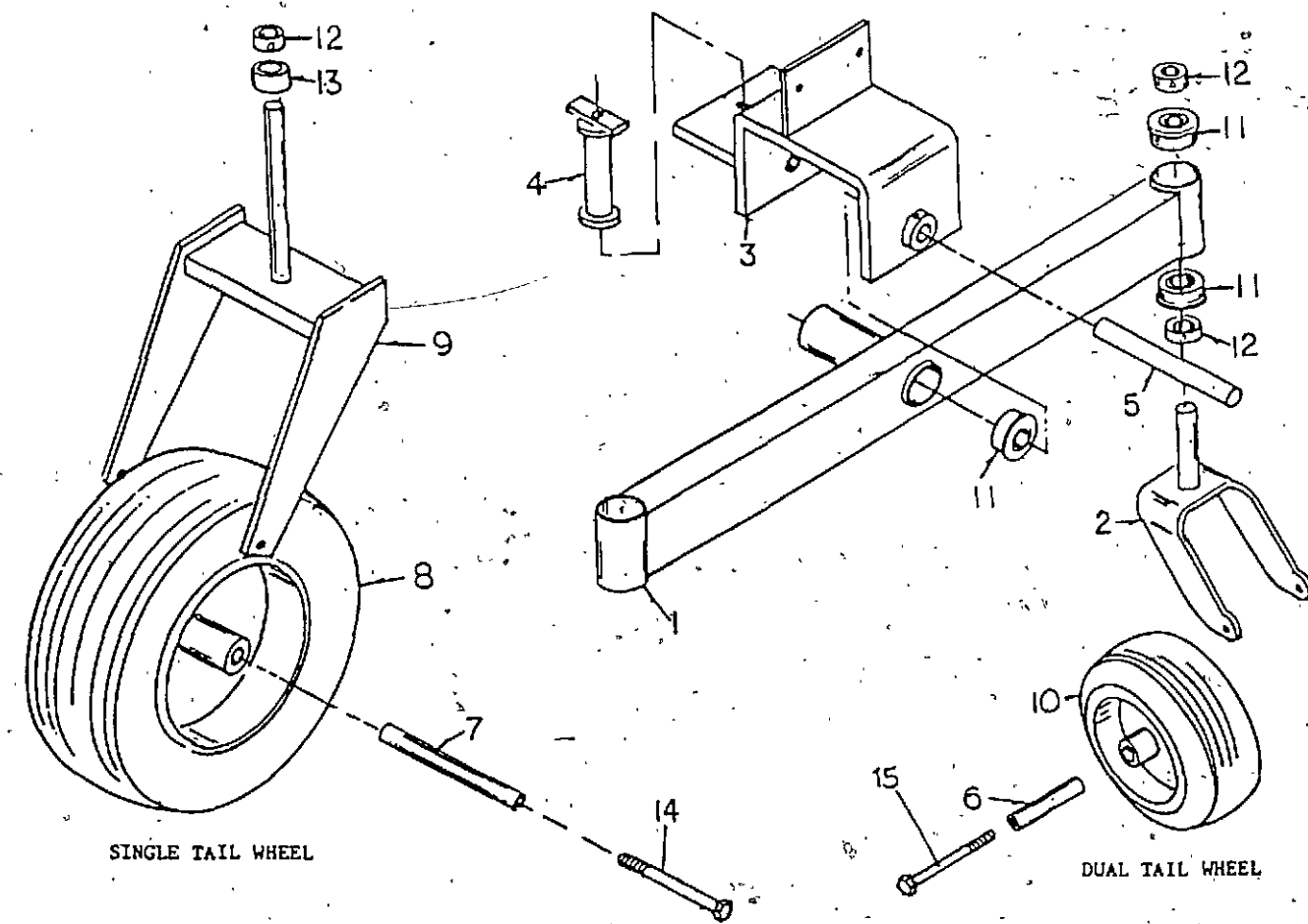
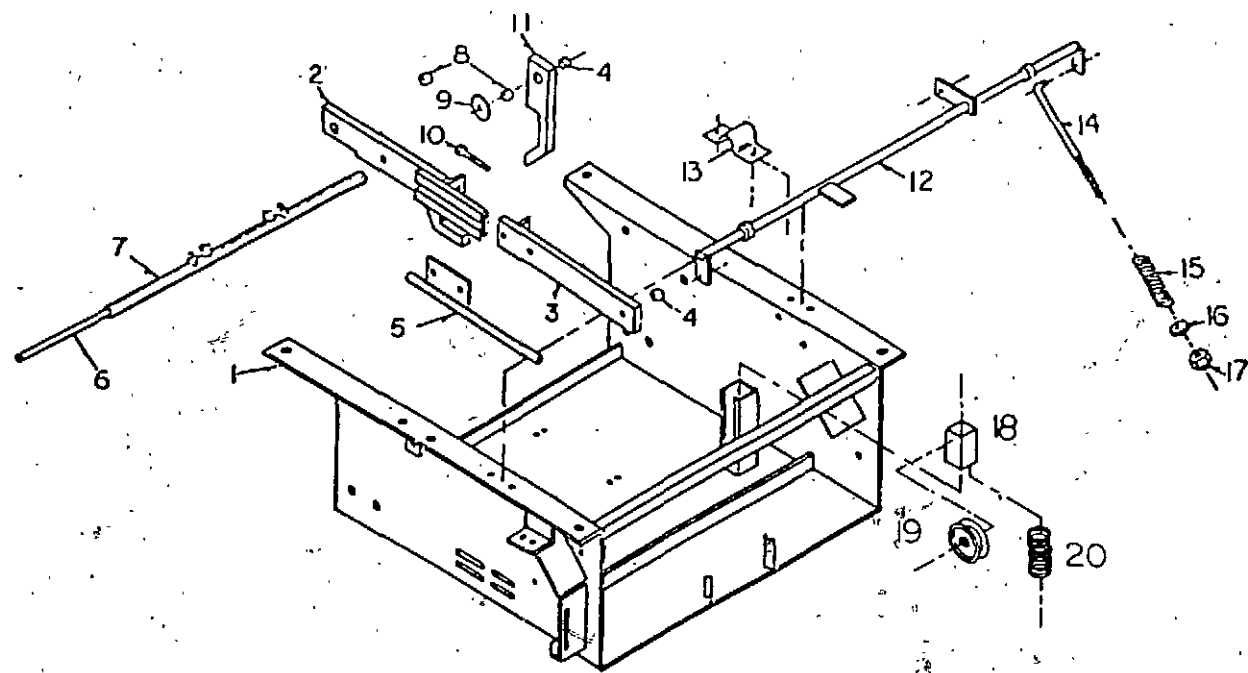


BASE ASSEMBLY

SINGLE & DUAL TAIL WHEEL ASSEMBLY

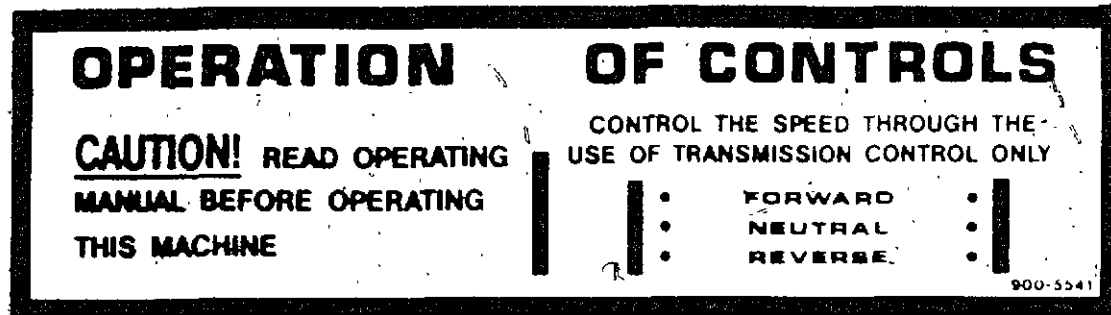
Item No.	Description	Qty.	Item No.	Description	Qty.
1	G1110000 Base	1	11	G1110023 Forward Nose Down Lock	1
2	G3000023RH Deck Lift Arm, Front RH	1	12	G1110017 Brake Cross Rod	1
	G3000023LH Deck Lift Arm, Front LH	1	13	G1110004 Brake Cross Rod Bearing	2
3	G3010024 Deck Lift Arm, Back RH	2	14	G1110007 Caliper Rod	2
4	G3000013S Bushing, Short	3	15	G9005568 Caliper Spring	2
5	G3000041 Wire Tube	1	16	38001C Flatwasher, 1/4"	2
6	G3000022 Cross Bar/Pin	1	17	32941C Elastic Stop Nut, 1/4-20	2
7	G3000014 Cross Bar	1	18	G1110019 Spring-Loaded Idler Mount	1
8	G3000013 Bushing, Long	3	19	G9002501 Idler Pulley	1
9	G2000015 Body Mount Washer	1	20	G9005580 Trans. Belt Tightener Spring	1
10	30031H5C Tap Bolt, 3/8-16 x 3", GR5	2			

SINGLE TAIL WHEEL				DUAL TAIL WHEEL			
Item No.	Description	Qty.	Item No.	Description	Qty.		
7	G2300017 Axle	1	1	G2300004 Dual Tail Wheel Axle	1		
8	G9004017 Tail Wheel Assembly	1	2	G2300007 Dual Tail Wheel Fork	2		
	G9003515 Bearing, Wheel Assembly	2	3	G2300005 Dual Tail Wheel Mount	1		
	G9004018 Tire, 16 x 6.50-8	-	4	G2300006 Dual Tail Wheel Tube Block	1		
	G9004019 Rim, 8"	-	5	G2300008 Pivot Axle	1		
9	G2300001 Tail Wheel Fork	1	6	G2000017 Tail Wheel Axle	2		
12	G9005510 Set Collar, 1"	2	10	G9004022 Tail Wheel Assembly	2		
13	G2130003 Spacer, Tail Wheel Fork	1		G9003505 Bearing, Wheel Assembly	4		
14	314028C Hex Capscrew, 1/2-13 x 9 1/2"	1	11	G9003501 Bearing, 1"	6		
			12	G9005510 Set Collar, 1"	4		
			15	314022C Hex Capscrew, 1/2-13 x 6 1/2"	2		



TRACTOR DECALS

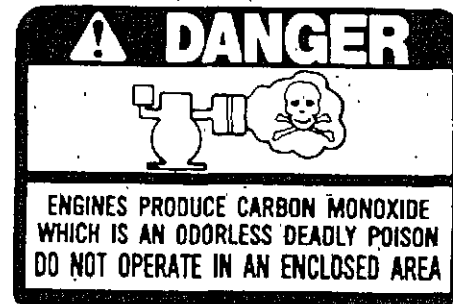
These decals have been placed on the tractor to instruct the operator and to warn of safety hazards. It is very important that they be in place and visible at all times. Replace damaged or missing decals immediately! Order by the part numbers shown below.



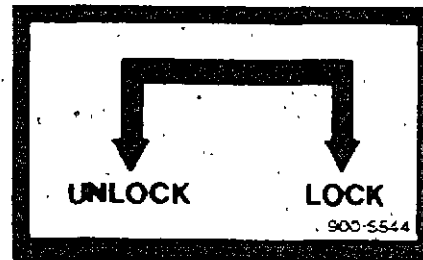
G9005541



G9005543



G9005723



G9005544



G9005611

G9005546 DASH DECAL

G9005702 G1250 DECAL KIT



G9005548

INGERSOLL

Ingersoll Equipment Co., Inc.



GRAZER GROUND MOWERS

Models

GI250,GI600

(S/N 02-09-0248 AND AFTER)

GI800CD - ALL

(CHAIN DRIVE MOWERS)

Parts List

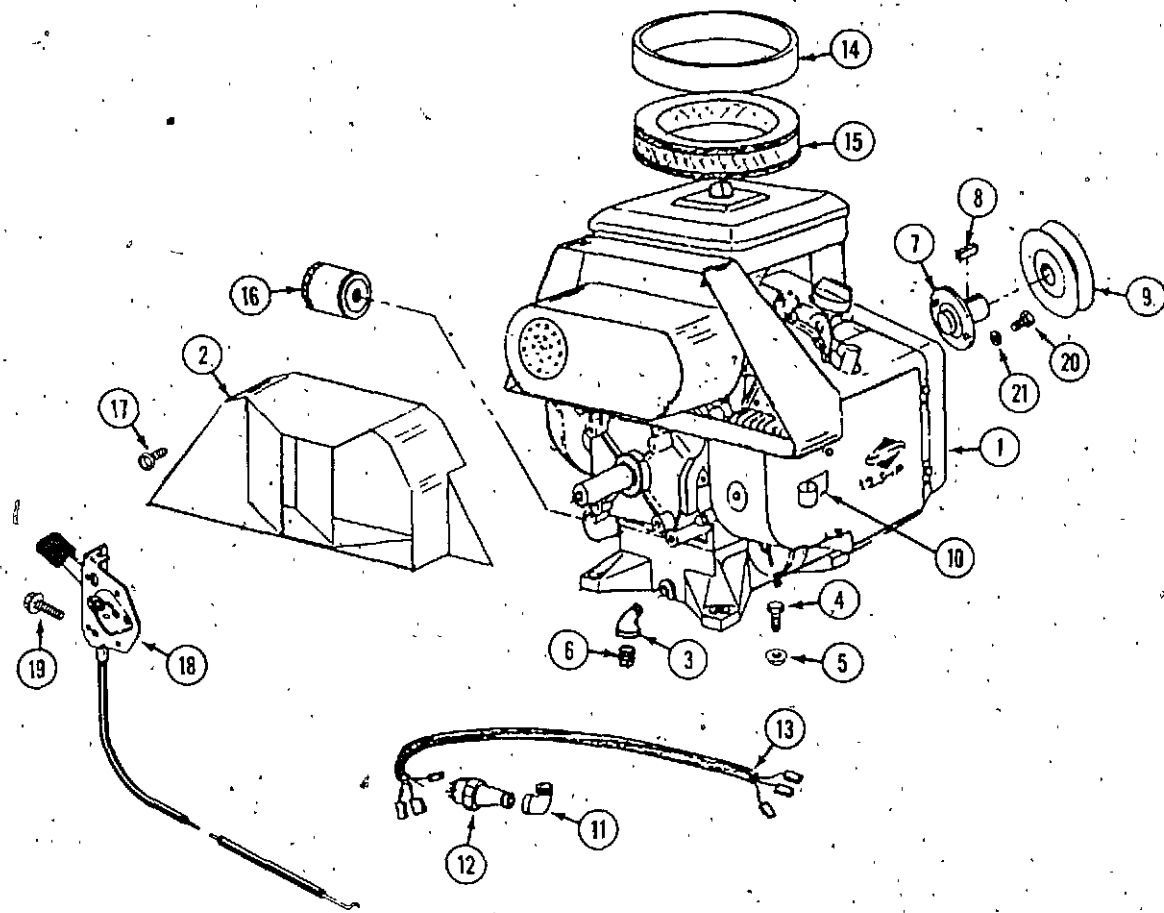
TABLE OF CONTENTS

ENGINE	C4
ELECTRIC CLUTCH	C6
FUEL SYSTEM	C6
BASE ASSEMBLY	C8
BODY	C10
LIFT LEVER (GI800CD)	C10
SEAT LID AND STEERING	C12
TAIL WHEEL	C14-D4
PARKING BRAKE	D6
TRANSMISSION (GI250,GI600)	D8
TRANSMISSION (GI800CD)	D10
CROSS SHAFT	D12
ELECTRICAL SYSTEM	D14-E2
DECALS	E4

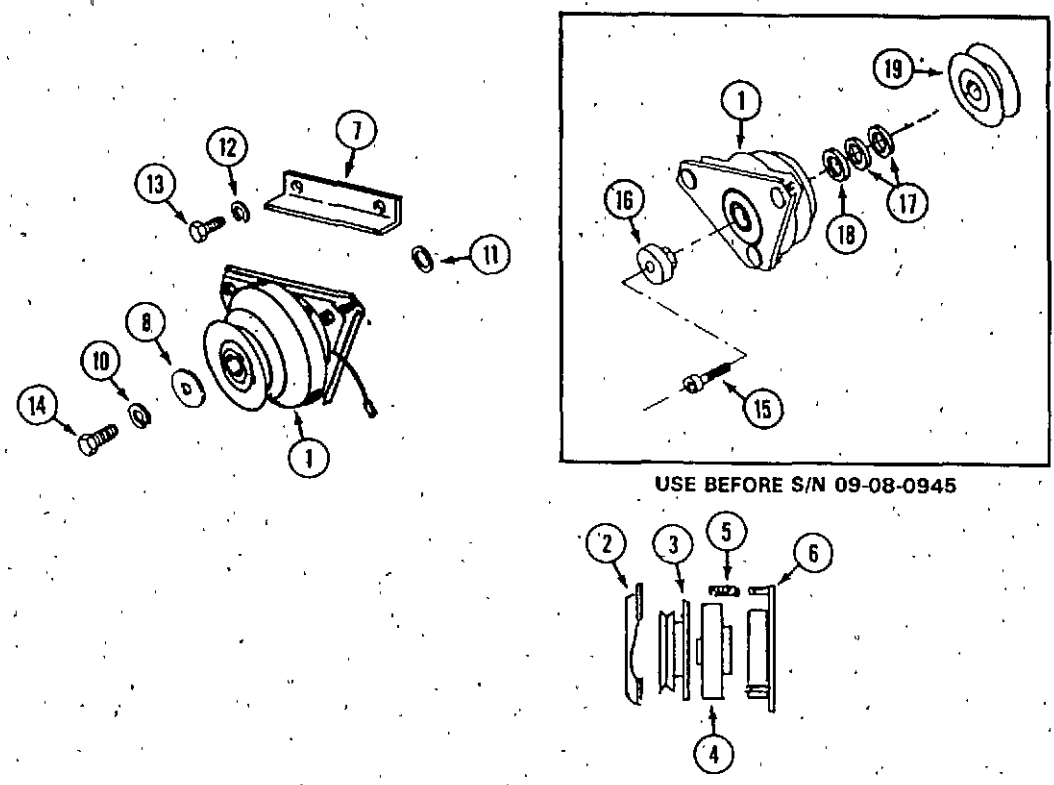


Grazer Division, Ingersoll Equipment Company
Winneconne, WI 54986

**ENGINE AND ATTACHING PARTS
BRIGGS AND STRATTON**



REF.	PART NO.	DESCRIPTION	REQ'D
1	C 41674	ENGINE - B&S, IC model 422447 Spec. No. 1277 (18-hp)	1
1	C 40728	ENGINE - Briggs & Stratton, IC model 402447 Spec. No. 1225 (16 hp)	1
1	C 41675	ENGINE - Briggs and Stratton, model 404447, Spec. No. 1211 (12.5 hp)	1
2	C 37533	DUCT - air	1
3	221- 1413	ELBOW - street 3/8"	1
4	113- 104	BOLT - 5/16" - 18 x 1-1/4"	4
5	131- 911	NUT - 5/16" - 18	4
6	C 37546	PLUG - pipe 3/8"	1
7	C 37537	SHAFT - stub	1
8	C 41015	KEY - 1/4" x 1/4" x 1"	1
9	C 37539	PULLEY - drive (use 83-55 set screw)	1
10	C 37540	RETAINER - starter cable	2
11	221- 411	ELBOW - street 1/8"	1
12	C 37531	UNIT - oil sending	1
13	C 42240	HARNESS - wire	1
14	C 37543	PRECLEANER	1
15	C 37544	FILTER - air	1
16	C 34374	FILTER - oil	1
17	121- 21	BOLT - 1/4" - 20 flange lock	1
18	C 37819	CABLE - choke	1
18	C 37820	CABLE - throttle	1
19	C 39403	SCREW - #12 x 1/2"	4
20	192- 21	LOCKWASHER - 3/8"	2
21	113- 207	BOLT - 3/8" - 16 x 1"	2

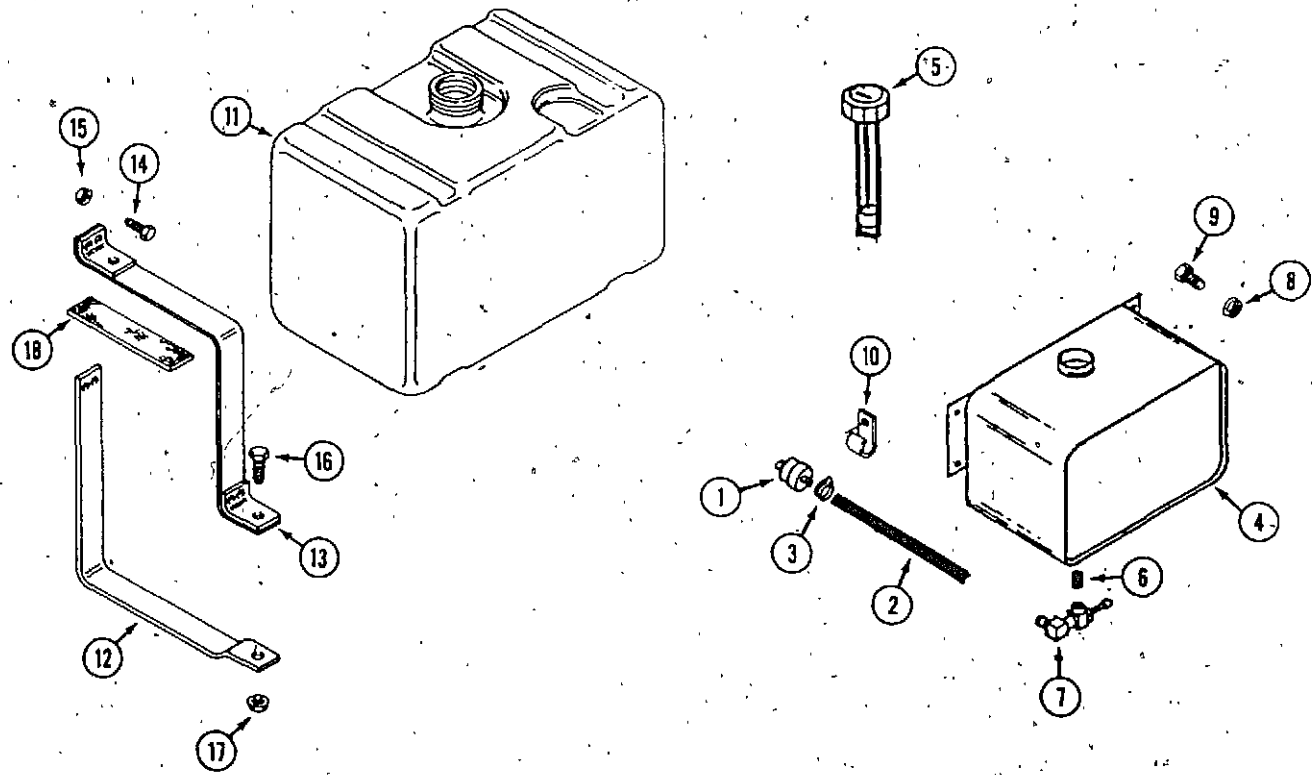


ELECTRIC CLUTCH (PTO)

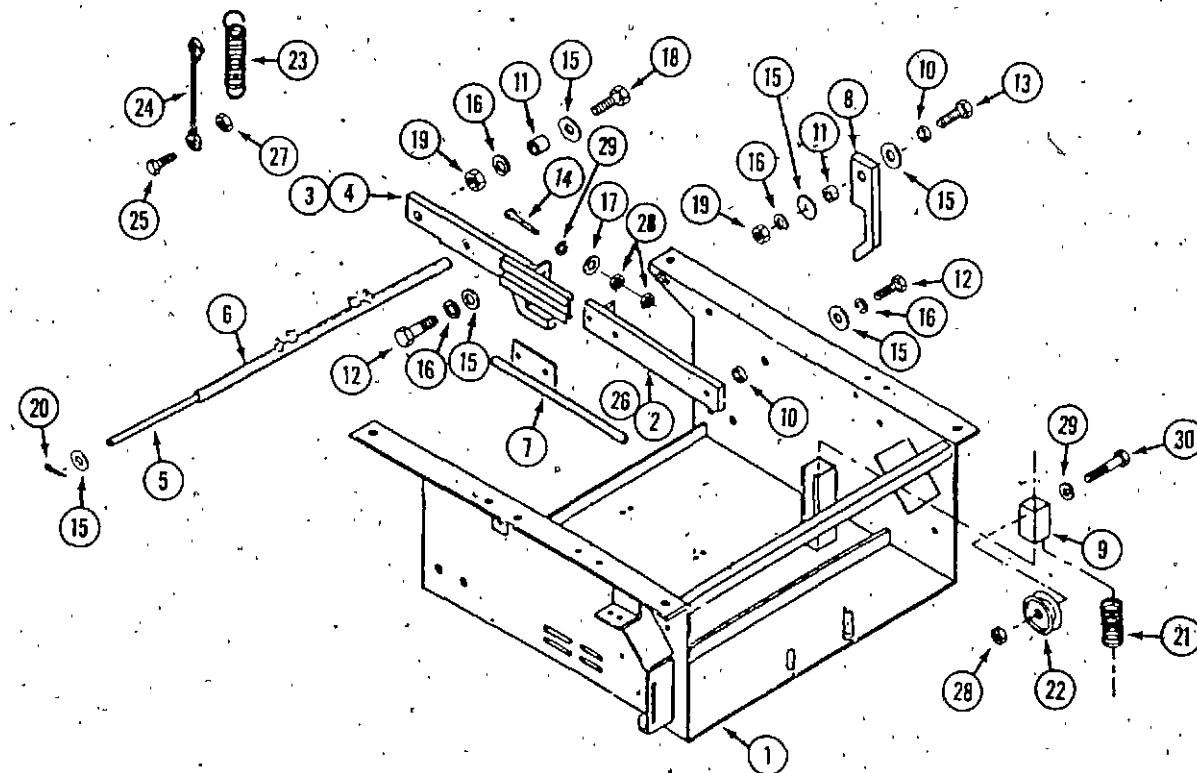
REF.	PART NO.	DESCRIPTION	REQ'D
1	C 37511	CLUTCH ASSEMBLY	1
2	C 37549	BRAKE - clutch	1
3	C 37550	ARMATURE - clutch	1
4	C 37551	ROTOR - clutch	1
5	C 37552	KIT - spring and nut (3 each)	1
6	C 37553	COIL - clutch	1
7	C 37562	BRACKET - clutch stop	1
8	C 31615	WASHER - retaining	1
10	192- 21	LOCKWASHER - 3/8"	1
11	C 31614	WASHER - 1-1/8"	1
12	192- 22	LOCKWASHER - 7/16"	2
13	113- 335	BOLT - 7/16" - 14 x 3/4"	2
14	114- 201	BOLT - 3/8" - 24 x 1-1/4"	1
15	C 37982	SCREW - socket head 3/8" - 24 x 1-3/4"	1
16	C 37978	RETAINER - clutch	1
17	C 37980	WASHER - 1", 10 ga.	2
18	C 37981	WASHER - 1", 14 ga.	1
19	C 37977	PULLEY - drive	1

FUEL SYSTEM

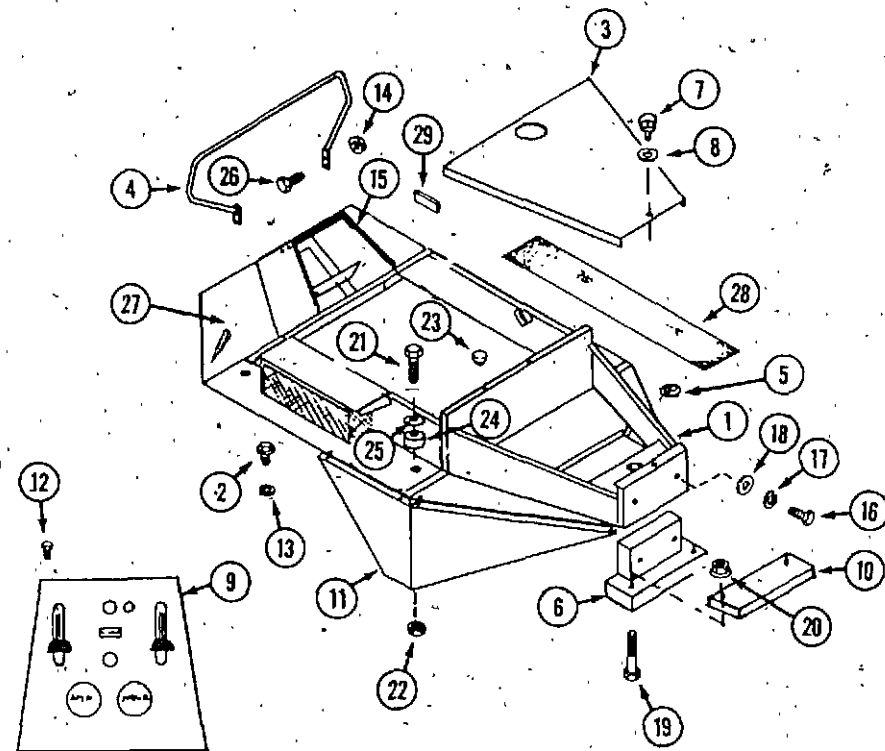
1	C 37554	FILTER - fuel	1
2	C 41713	HOSE - fuel (cut to length)	1
3	214- 103	CLAMP - hose	4
4	NSS	TANK - fuel (1-3/4" filler tube) metal (use C45119, C44822)	1
4	C 45119	TANK - fuel (2-1/4" filler tube) metal	1
5	C 44290	CAP - fuel tank (with gauge) 1-3/4"	1
5	C 44822	CAP - fuel tank (with gauge) 2-1/4" (use on metal tank)	1
5	C 45334	CAP - fuel tank (with gauge) 2-1/4" (use on plastic tank)	1
6	221-1101	NIPPLE - pipe 1/8"	1
7	C 37811	VALVE - shut off	1
8	131- 934	NUT - 1/4" - 20 flange lock	4
9	113- 1	BOLT - 1/4" - 20 x 1/2"	1
9	113- 3	BOLT - 1/4" - 20 x 3/4"	3
10	C 32455	CLIP - "J" fuel line	1
11	C 45333	TANK - fuel (2-1/4" filler tube) (plastic)	1
11	NSS	TANK - fuel (1-3/4" filler tube) plastic (use C45333, C45334)	1
12	C 45061	BRACKET - fuel tank	1
13	C 45062	STRAP - fuel tank	1
14	113- 5	BOLT - 1/4" - 20 x 1-1/2"	2
15	131- 71	NUT - 1/4" - 20 lock	2
16	113- 103	BOLT - 5/16" - 18 x 1"	2
17	131- 911	NUT - 5/16" - 18 flange lock	2
18	C 34189	CUSHION	2



BASE ASSEMBLY

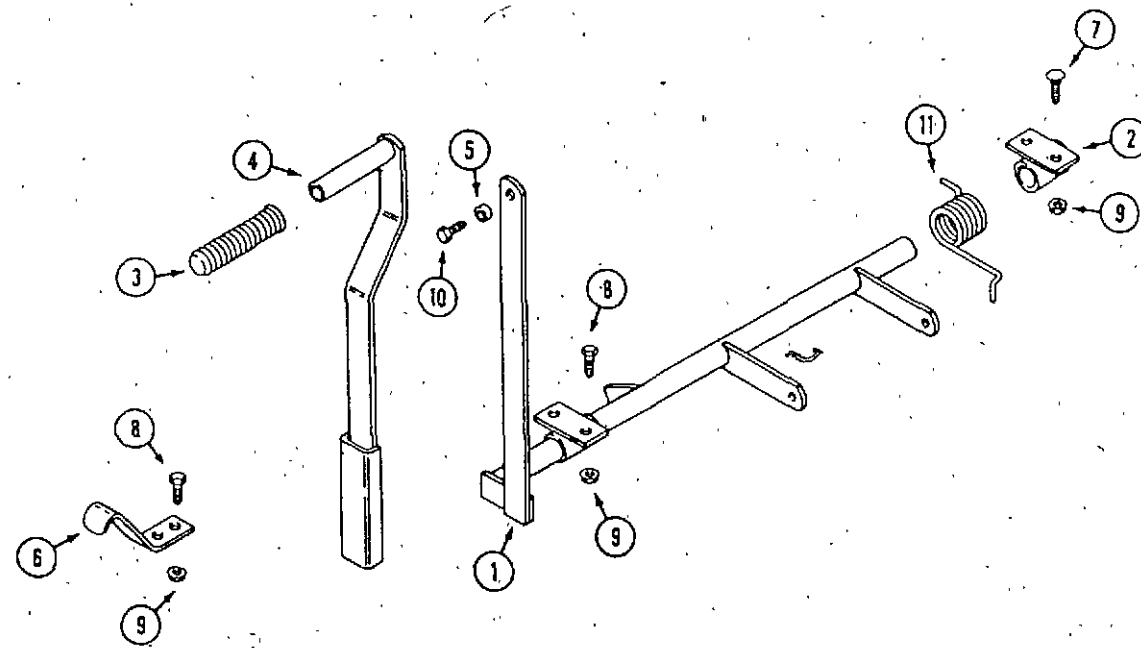


REF.	PART NO.	DESCRIPTION	REQ'D
1	C 45924	BASE	1
2	C 37575	ARM - deck lift R.H.	1
3	C 37574	ARM - front L.H.	1
4	C 37573	ARM - front R.H.	1
5	C 37578	PIN - cross bar	1
6	C 37579	BAR - cross	1
7	C 37577	TUBE - wire	1
8	C 37583	LOCK - forward nose down	2
9	C 37603	TUBE - drive idler	1
10	C 37576	BUSHING - deck lift arm (3/8" long)	3
11	C 37586	BUSHING - pivot (1/2" long)	1
12	113- 417	BOLT - 1/2" - 13 x 1-1/4"	6
13	113- 441	BOLT - 1/2" - 13 x 2-1/4"	1
14	113- 210	BOLT - 3/8" - 16 x 3"	2
15	195- 105	WASHER - 1/2"	8
16	192- 23	LOCKWASHER - 1/2"	7
17	195- 104	WASHER - 3/8"	2
18	113- 410	BOLT - 1/2" - 13 x 1-1/2"	2
19	129- 105	NUT - 1/2" - 13	1
20	132- 310	PIN - cotter 1/8" x 1"	2
21	C 37595	SPRING - idler tension	1
22	C 38864	PULLEY - idler	1
23	C 37815	SPRING - lift assist	2
24	C 37816	CABLE - lift	2
25	113- 4	BOLT - 1/4" - 20 x 1"	4
26	C 38594	ARM - deck lift L.H.	1
27	131- 71	NUT - lock 1/4" - 20	4
28	129- 103	NUT - 3/8" - 16	5
29	192- 21	LOCKWASHER - 3/8"	3
30	113- 213	BOLT - 3/8" - 16 x 2-1/4"	1
31	C 44403	GUARD - belt	1
32	113- 102	BOLT - 5/16" - 18 x 3/4"	2
33	192- 20	WASHER - lock	2



BODY

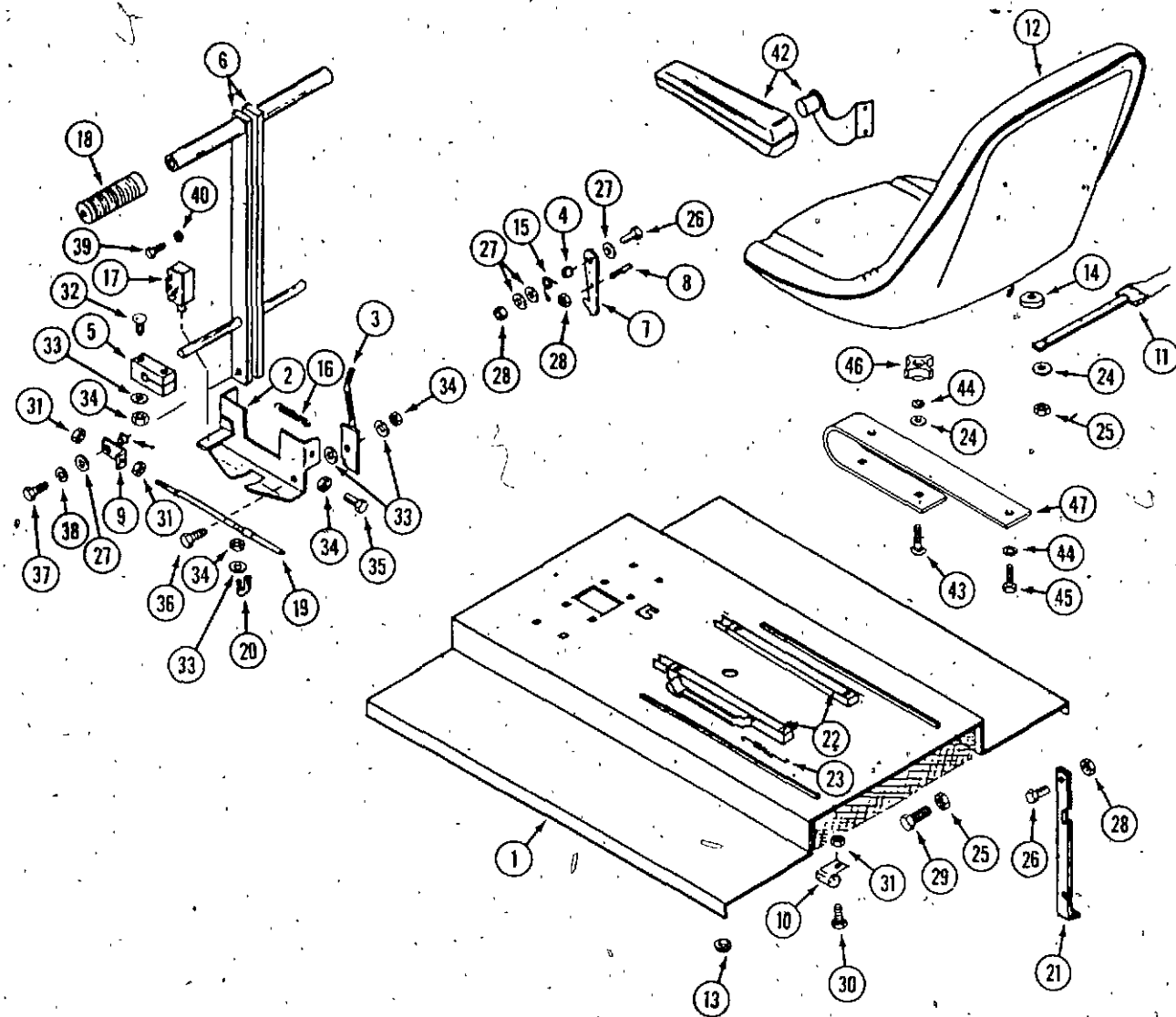
REF.	PART NO.	DESCRIPTION	REQ'D
1	C 45855	BODY - (1800CD)	1
1	C 41151	BODY (1250, 1600)	1
2	C 34808	BOLT - 1/4" - 20 x 3/4" tapping	8
3	C 41163	COVER - back	1
4	C 44844	BAR - handle (optional)	1
5	C 37824	BEARING - rear wheel fork	2
6	C 37810	WEIGHT - tail (optional for 1250)	1
7	C 41944	STUD - fastener	1
8	C 41945	GROMMET - fastener	1
9	C 37821	PANEL - dash	1
10	C 37958	WEIGHT - tail 13 lb. (optional for 1250)	2
11	C 41167	SKIRT - L.H. (1600)	1
11	C 41171	SKIRT - R.H. (1600)	1
11	C 41175	SKIRT - L.H. (1250, 1800CD)	1
11	C 41179	SKIRT - R.H. (1250, 1800CD)	1
12	C 39403	SCREW - #12 x 1/2"	4
13	192- 19	LOCK WASHER - 1/4"	8
14	131- 911	NUT - 5/16" - 18 flange lock	8
15	C 44036	TRIM - 27" (cut to length)	1
16	113- 103	BOLT - 5/16" - 18 x 1"	2
17	192- 20	LOCKWASHER - 5/16"	2
18	195- 103	WASHER - 5/16"	2
19	113- 259	BOLT - 3/8" - 16 x 4-1/2"	2
20	131- 1352	NUT - 3/8" - 16 flange lock	2
21	113- 425	BOLT - 1/2" - 13 x 3"	4
22	131- 70	NUT - 1/2" lock	4
23	C 35067	BUMPER - nylon	4
24	C 37818	MOUNT - body, rubber	8
25	C 37581	WASHER - mount, body	4
26	C 42056	BOLT - 5/16" - 18 x 5/8" black	8
27	C 43419	PAD - footrest, front L.H. (shown)	1
27	C 43420	PAD - footrest, front R.H.	1
28	C 43421	PAD - footrest, rear R.H. side	1
29	C 37631	GRIP - handle	1



**LIFT LEVER
(1800CD)**

1	C 44942	LEVER - lift	1
2	C 44948	PIVOT - lift	1
3	C 37631	GRIP - handle	1
4	C 44949	EXTENSION - lift lever, upper	1
5	C 42895	BUSHING	1
6	C 44952	BRACKET - lever lock down	1
7	111- 132	BOLT - carriage 5/16" - 18 x 3/4"	2
8	113- 103	BOLT - 5/16" - 18 x 1"	4
9	131- 911	NUT - 5/16" - 18 flange lock	8
10	113- 1	BOLT - 1/4" - 20 x 1/2"	1
11	C 45120	SPRING - torsion	1

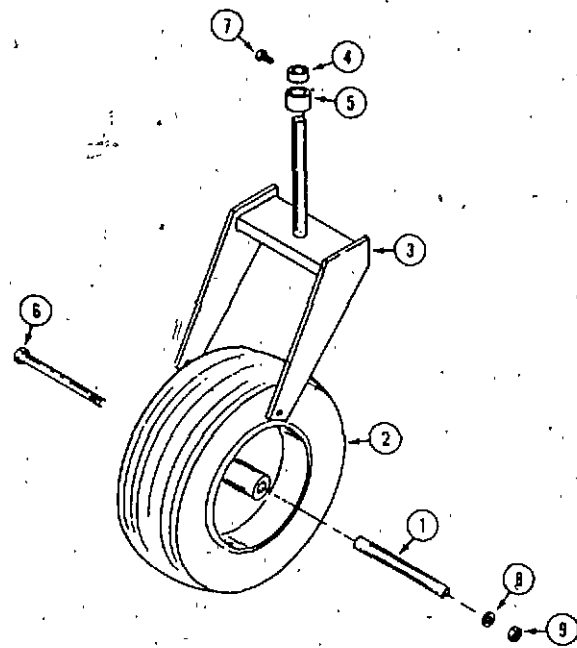
SEAT LID AND STEERING



REF.	PART NO.	DESCRIPTION	REQ'D
1	C 38054*	LID - seat	1
1	C 44237**	LID - seat	2
2	C 37840	BRACKET - lever lock	1
3	C 37841	LATCH - lever lock	1
4	C 44498	BUSHING	2
5	C 37842	BEARING - block	4
6	C 37843*	LEVER - steering	2
6	C 44915**	LEVER - steering	2
7	C 44481	LATCH - seat lid	1
8	NSS	BOLT - latch, seat lid (use C44481)	1
9	C 42896	BRACKET - steering cable end	4
10	C 32455	RETAINER - harness, seat lid	1
11	C 37520	SWITCH - seat	1
12	C 37847*	SEAT	1
12	C 43202**	SEAT	1
13	C 25165	GROMMET - 1" x 1-3/4"	1
13	C 37787	GROMMET - 1/2" x 1"	1
14	C 37850	SPACER - seat	4
15	C 37851	SPRING - latch, seat lid	1
16	C 37837	SPRING - bracket, lever lock	1
17	C 37521	SWITCH - safety	1
18	C 37631	GRIP - handle	2
19	C 37705	CABLE - steering	2
20	C 37616	CLAMP - steering cable	UAR
21	C 37852	PROP - seat lid	1
22	C 37848*	KIT - seat slide rail (pair)	1
23	C 37853*	SPRING - seat	1
24	195- 103	WASHER - 5/16"	4
25	131- 69	NUT - 5/16"	4
26	113- 4	BOLT - 1/4" - 20 x 1"	2
27	195- 102	WASHER - 1/4"	3
28	131- 71	NUT - 1/4" - 20 lock	3
29	113- 103	BOLT - 5/16" - 18 x 1"	2
30	182- 528	SCREW - #10 - 32 x 1/2"	1
31	193- 1000	NUT - #10 - 32	5
32	111- 114	BOLT - 1/4" - 20 x 1-1/2" carriage	8
33	195- 102	WASHER - 1/4"	10
34	131- 71	NUT - 1/4" - 20 lock	11
35	113- 3	BOLT - 1/4" - 20 x 3/4"	2
36	C 42359	BOLT 1/4" - 20 x 2"	1
37	113- 3	BOLT - 1/4" - 20 x 3/4"	2
38	192- 19	LOCKWASHER - 1/4"	2
39	182- 525	SCREW - #10 - 32 x 3/8"	1
40	192- 18	LOCKWASHER - 3/16"	1
41	C 42895	BUSHING - steering cable	4
42	NSS	KIT - arm rest (optional) (order as machinery item GDS13)	-
	C 22947	TIE - nylon	1
43	111- 204**	BOLT - 5/16" - 18 x 1-1/4" carriage	4
44	192- 20**	LOCKWASHER - 5/16"	8
45	113- 103	BOLT - 5/16" - 18 x 1"	4
46	C 43438**	KNOB - seat	4
47	C 43137	SPRING - seat	2

*Use before PIN 953403021

**Use PIN 953403021 and after

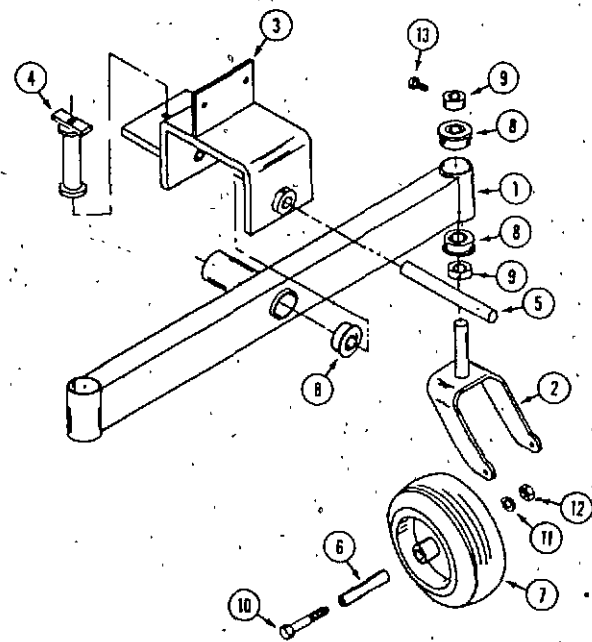


**SINGLE TAIL WHEEL
(G1250, G1600)**

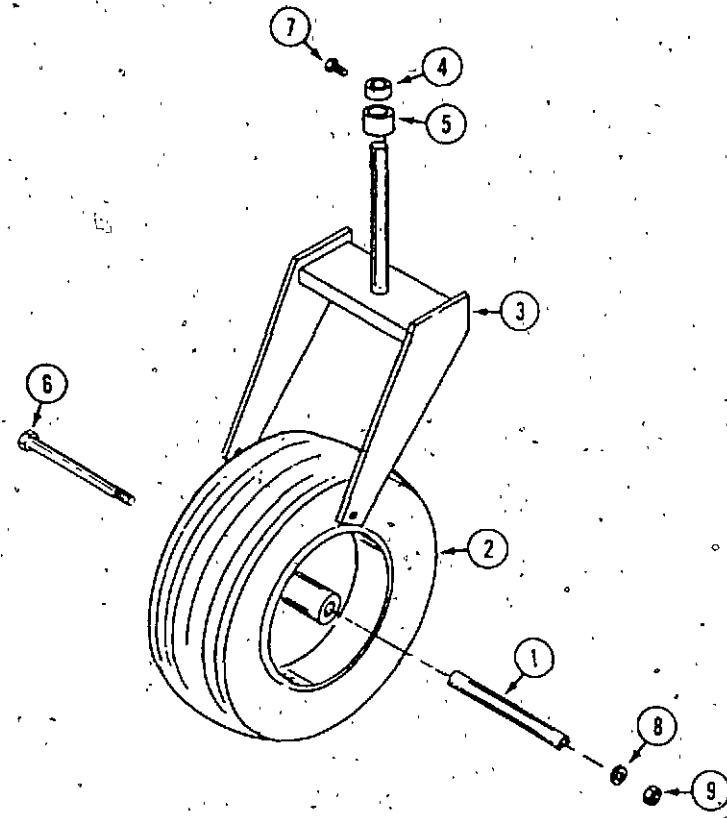
REF.	PART NO.	DESCRIPTION	REQ'D
1	C 38027	AXLE - wheel	1
2	C 38028	WHEEL ASSEMBLY - tail 15 x 6.00 - 6	1
	C 44499	BEARING - wheel	2
	C 38029	TIRE - 15 x 6.00 - 6	1
	C 38232	RIM - 6"	1
3	C 39015	FORK - tail wheel	1
4	C 37860	COLLAR - set 1"	1
5	C 37861	SPACER - tail wheel fork	1
6	C 38055	BOLT - 1/2" - 13 x 8-1/2"	1
7	85- 58	SCREW - set 5/16" - 18 x 1/2" square head	1
8	192- 23	LOCKWASHER - 1/2"	1
9	129- 105	NUT - 1/2" - 13	1
	219- 92	FITTING - grease 90° 1/4" - 28 self tap (caster pivot)	1

**DUAL TAIL WHEEL
(DT10)**

1	C 37863	AXLE - dual wheel	1
2	C 39016	FORK - tail wheel	2
3	C 37865	BRACKET - mounting	1
4	C 37866	TUBE - block	1
5	C 38230	PIVOT - axle	1
6	C 37915	AXLE - wheel	2
7	C 37869	WHEEL ASSEMBLY	2
	C 44499	BEARING - wheel	2
	C 37870	TIRE - 13 x 5.00 - 6	2
	C 37871	RIM -	2
8	C 37824	BEARING - 1"	6
9	C 37860	COLLAR - set 1"	4
10	113- 2419	BOLT - 1/2" - 13 x 6-1/2"	2
11	192- 23	LOCKWASHER - 1/2"	2
12	129- 105	NUT - 1/2" - 13	2
13	85- 58	SCREW - set 5/16" - 18 x 1/2" square head	4
	219- 92	FITTING - grease 90° 1/4" - 28 self tap (castor pivot)	UAR

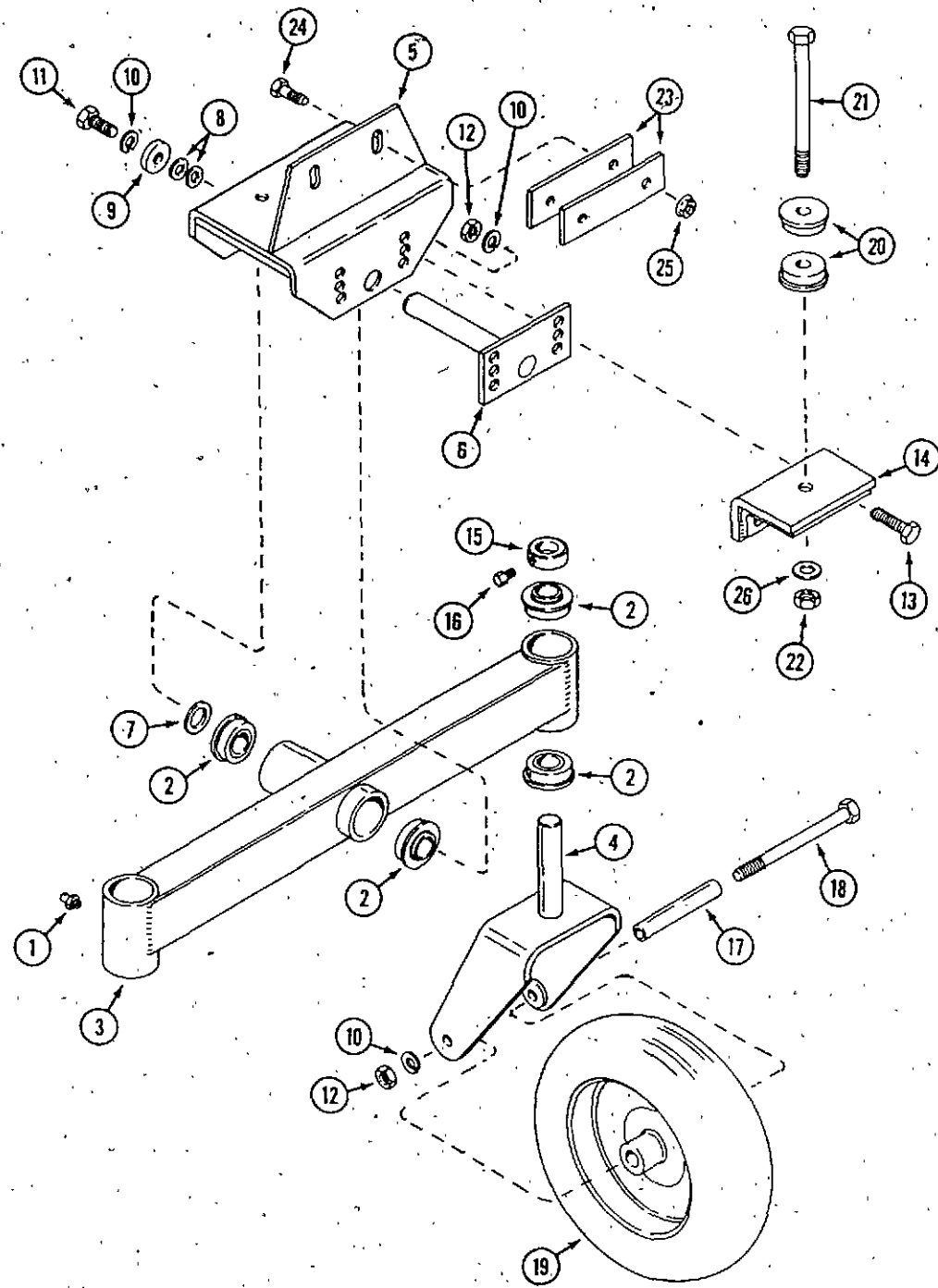


**SINGLE TAIL WHEEL
(G1800CD)**



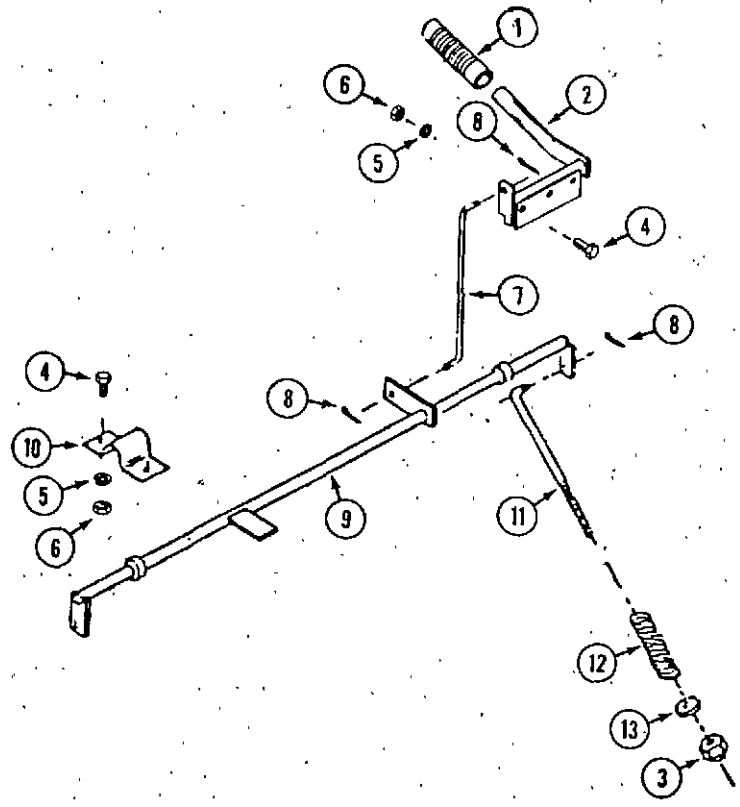
REF.	PART NO.	DESCRIPTION	REQ'D
1	C 37854	AXLE - wheel	1
2	C 37855	WHEEL ASSEMBLY - tail 16 x 6.50 - 8	1
	C 44499	BEARING - wheel	2
	C 37857	TIRE - 16 x 6.50 - 8	1
	C 37858	RIM - 8"	1
3	C 37859	FORK - tail wheel	1
4	C 37860	COLLAR - set 1"	1
5	C 37861	SPACER - tail wheel fork	1
6	113- 452	BOLT - 1/2" - 13 x 9-1/2"	1
7	85- 58	SCREW - set 5/16" - 18 x 1/2" square head	1
8	192- 23	LOCKWASHER - 1/2"	1
9	129- 105	NUT - 1/2" - 13	1
	219- 92	FITTING - grease 90° 1/4" - 28 self tap (caster pivot)	1

DTW10 DUAL TAIL WHEEL



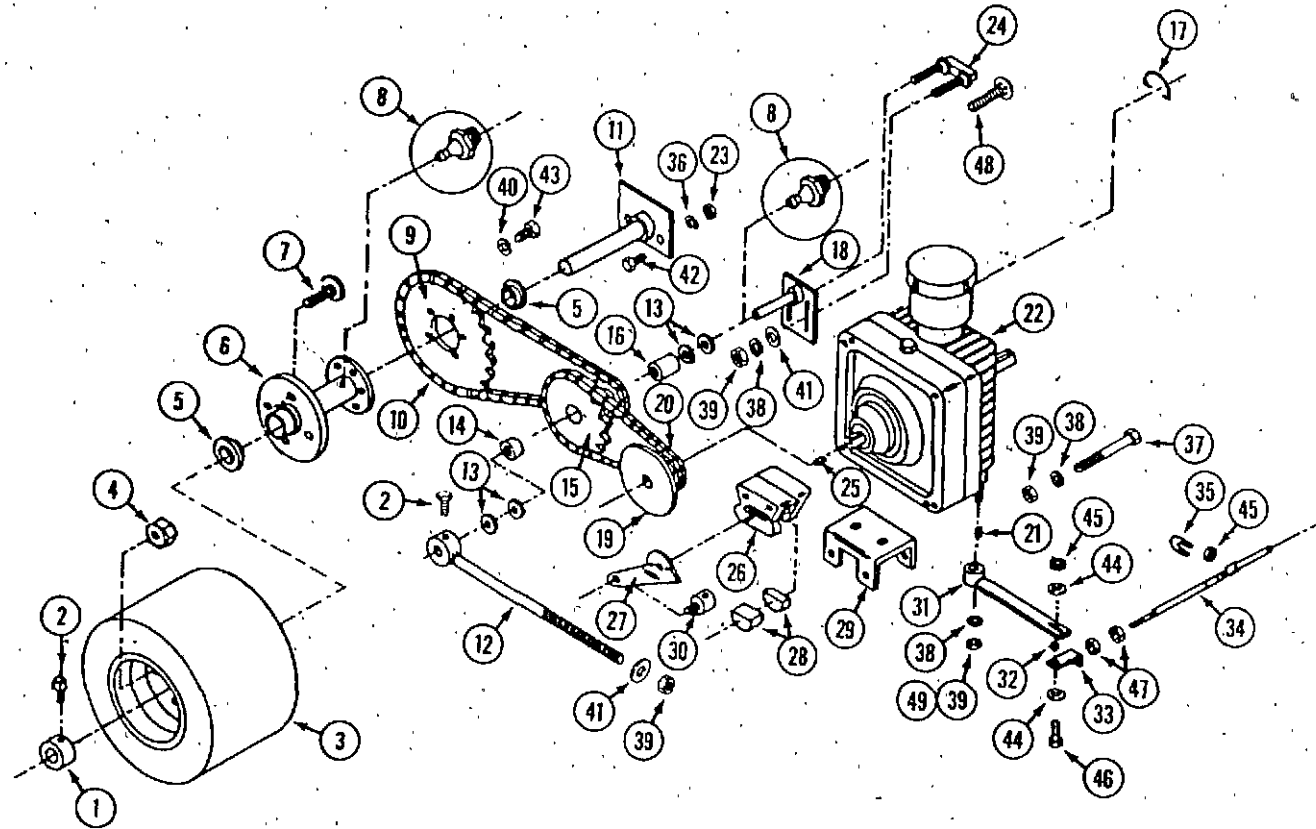
REF.	PART NO.	DESCRIPTION	REQ'D
1	219- 20	FITTING - lubrication 1/4" - 28	3
2	C 37824	BEARING - ball 1"	6
3	C 45610	AXLE - dual wheel	1
4	C 45645	FORK - wheel	2
5	C 45618	MOUNT - axle	1
6	C 45689	ROD - axle pivot	1
7	C 14919	WASHER - 1" x 1-3/4"	UAR
8	C 37004	WASHER - 1/2" x 1"	UAR
9	C 45841	WASHER - 1/2" x 1-3/8"	1
10	192- 23	LOCKWASHER - 1/2"	5
11	113- 417	BOLT - 1/2" - 13 x 1-1/4"	1
12	129- 105	NUT - 1/2" - 13	4
13	113- 412	BOLT - 1/2" - 13 x 1-3/4"	2
14	C 45708	MOUNT - axle, front extension	1
15	C 37860	COLLAR - set 1"	2
16	85- 58	SCREW - set 5/16" - 18 x 1/2" square-head	1
17	C 37915	TUBE - axle	2
18	113- 448	BOLT - 1/2" - 13 x 7"	2
19	C 37869	WHEEL ASSEMBLY	2
	C 37872	BEARING - wheel	2
	C 37870	TIRE - 13 x 5.00 - 6	1
	C 37871	RIM	1
20	C 45711	BUSHING - tail wheel hub	2
21	113- 646	BOLT - 5/8" - 11 x 7-1/2"	UAR
21	113- 2606	BOLT - 5/8" - 11 x 11"	UAR
22	131- 356	NUT - 5/8" - 11	1
23	C 45746	PLATE - stiffener	2
24	113- 208	BOLT - 3/8" - 16 x 1-1/4"	2
25	131- 1352	NUT - 3/8" - 16 flange lock	2
26	195- 541	WASHER - 5/8" x 1-1/2"	1

PARKING BRAKE
(also see drive assembly)



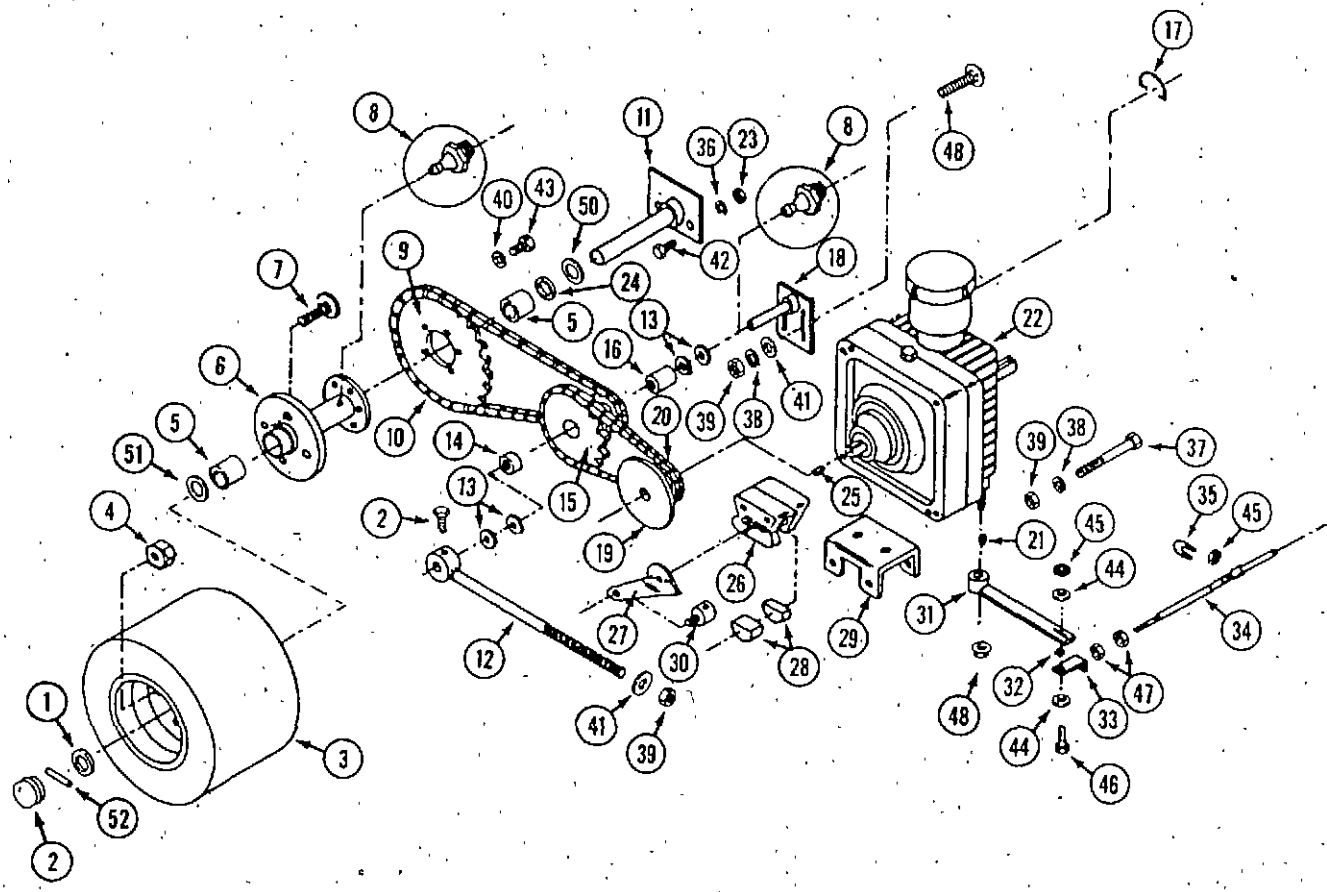
REF.	PART NO.	DESCRIPTION	REQ'D
1	C 37631	GRIP - handle	1
2	C 37604	HANDLE - brake	1
3	131- 71	NUT - lock 1/4" - 20	2
4	113- 3	BOLT - 1/4" - 20 x 3/4"	4
5	192- 19	LOCKWASHER - 1/4"	4
6	129- 101	NUT - 1/4" - 20	4
7	C 37606	ROD - brake	1
8	132- 332	PIN - cotter 3/32" x 1"	2
9	C 37985	ROD - cross, brake	1
10	C 37607	BEARING - cross rod	2
11	C 37986	ROD - caliper	2
12	C 37987	SPRING - compression	2
13	195- 102	WASHER 1/4"	2
14	131- 71	NUT - lock 1/4" - 20	2

**TRANSMISSION AND DRIVE CHAINS
(G1250, G1600)**



REF.	PART NO.	DESCRIPTION	REQ'D
1	C 37860	COLLAR - set 1"	2
2	85- 58	SCREW - set 5/16" - 18 x 1/2" square head	2
3	C 37988	WHEEL ASSEMBLY - drive	2
	C 37989	TIRE - 16 x 7.50 - 8	1
	C 37990	RIM - wheel	1
4	C 37657	NUT - lug 1/2" - 20	8
	C 37992	HUB ASSEMBLY - 5-3/4"	2
	C 38992	HUB ASSEMBLY - (7" long)	2
5	C 37824	BEARING - wheel	2
6	C 37991	HUB - wheel (5-3/4" long)	1
6	C 38993	HUB - wheel (7" long)	1
7	C 37661	BOLT - lug 1/2" - 20 x 1-1/4"	4
8	219- 20	FITTING - grease 1/4" - 28 self tapping	1
9	C 37994	SPROCKET - final drive	1
10	C 37996	CHAIN - final drive (80 pitches)	2
10	C 38618	CHAIN - final drive (68 pitches)	1
10	C 44081	CHAIN - final drive (71 pitches)	1
11	C 37997	AXLE - drive wheel (7-1/2" shaft)	2
11	G 38859	AXLE - drive wheel (8-3/4" shaft)	1
12	C 37998	COLLAR - support	2
13	C 37999	WASHER - 3/4" 10 ga.	8
14	C 38000	BEARING - idler sprocket 1/2"	2
15	C 38002	SPROCKET - idler (includes bearings)	1
16	C 38003	BEARING - idler sprocket 3/4"	2
17	C 38004	CLIP - transmission dump valve	2
18	C 38005	SHAFT - idler sprocket	2
19	C 38006	SPROCKET - transmission (includes brake disc)	2
20	C 44083	CHAIN - primary drive	2
21	126- 6	KEY - 1/8" x 3/8" Woodruff	2
22	C 38008	TRANSMISSION L.H. (shown) (CW)	1
22	C 38009	TRANSMISSION - R.H. (CCW)	1
	C 38010	DIAPHRAGM - transmission	1
	C 38011	KIT - seal	1
	C 38012	KIT - reservoir, transmission	1
23	129- 105	NUT - 1/2" - 13	4
24	NSS	BAR - bolt (use 111-366)	2
25	C 37664	KEY - woodruff 1/8" x 1/2"	2
	C 37626	BRAKE ASSEMBLY - L.H.	1
	C 37625	BRAKE ASSEMBLY - R.H.	1
26	NSS	CALIPER - brake	1
27	C 38016	LEVER - caliper L.H.	1
27	C 38017	LEVER - caliper R.H.	1
28	C 37627	PAD - brake (set)	1
29	C 38018	BRACKET - caliper	1
30	C 37724	COLLAR - caliper rod	1
31	C 37698	ARM - transmission L.H.	1
31	C 37699	ARM - transmission R.H.	1
32	C 42895	BUSHING - cable end	2
33	C 42896	END - steering cable	2
34	C 37705	CABLE - steering	2
35	C 37616	CLAMP - steering cable	2
36	192- 23	LOCKWASHER - 1/2"	4
37	113- 241	BOLT - 3/8" - 16 x 3"	8
38	192- 21	LOCKWASHER - 3/8"	8
39	129- 103	NUT - 3/8" - 16	8
40	192- 20	LOCKWASHER - 5/16"	5
41	195- 104	WASHER - 3/8"	4
42	113- 410	BOLT - 1/2" - 13 x 1-1/2"	4
43	113- 103	BOLT - 5/16" 18 x 1"	5
44	195- 102	WASHER - 1/4"	4
45	131- 71	NUT - 1/4" - 20 lock	6
46	113- 4	BOLT - 1/4" - 20 x 1"	2
47	C 37598	NUT - #10 - 32 lock	4
48	111- 366	BOLT - carriage 3/8" - 16 x 1-1/4"	4
49	131- 1352	NUT - 3/8" - 16 flange lock	2

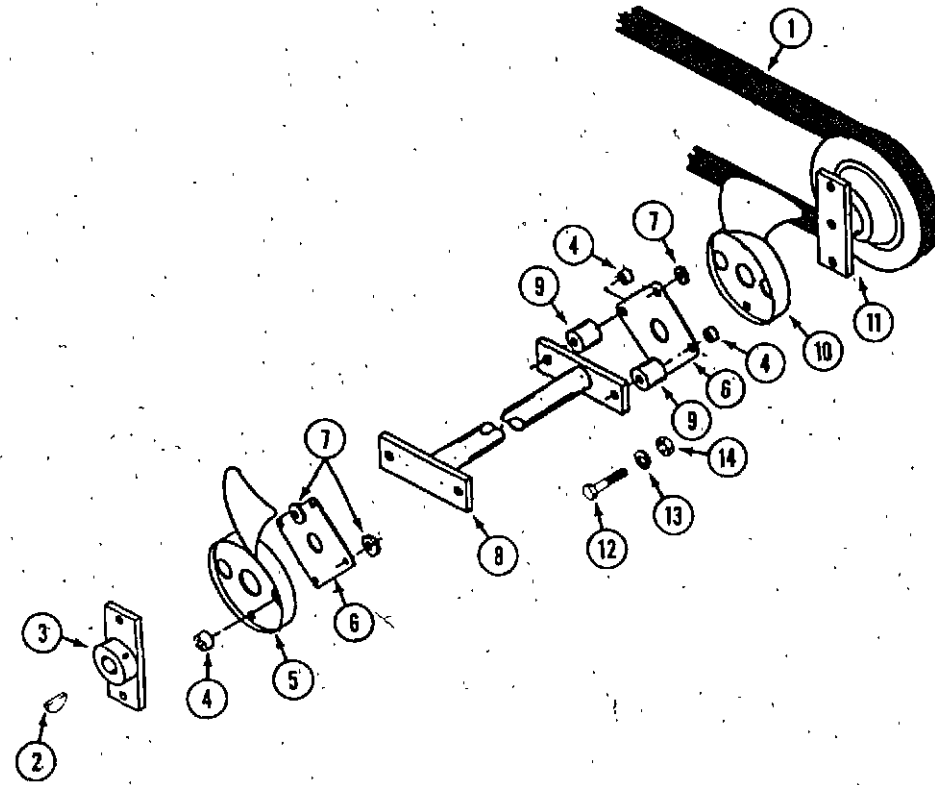
**TRANSMISSION AND DRIVE CHAINS
(G1800CD)**



REF.	PART NO.	DESCRIPTION	REQ'D
1	C 46058	SPACER - hub	2
2	C 28317	CAP - hub	2
3	C 45887	WHEEL ASSEMBLY - drive	2
	C 37652	TIRE - 18 X 9.50 - 8	1
	C 45888	RIM - wheel	1
4	C 37657	NUT - lug 1/2" - 20	8
5	C 45928	BEARING - wheel hub	4
6	C 45933	HUB - wheel	1
7	C 37661	BOLT - lug 1/2" - 20 x 1-1/4"	4
8	219- 20	FITTING - grease 1/4" - 28 self tapping	1
9	C 37994	SPROCKET - final drive	1
10	C 45927	CHAIN - final drive	1
11	C 45929	AXLE - drive wheel	1
12	C 37998	COLLAR - support	2
13	C 37999	WASHER - 3/4" 10 ga.	8
14	C 38000	BEARING - idler sprocket 1/2"	2
15	C 38002	SPROCKET - idler (includes bearings)	1
16	C 38003	BEARING - idler sprocket 3/4"	2
17	C 38004	CLIP - transmission dump valve	2
18	C 38005	SHAFT - idler sprocket	2
19	C 38006	SPROCKET - transmission (includes brake disc)	2
20	C 44083	CHAIN - primary drive	2
21	126- 6	KEY - 1/8" x 3/8" Woodruff	2
22	C 38008	TRANSMISSION L.H. (shown) (CW)	1
22	C 38009	TRANSMISSION - R.H. (CCW)	1
	C 38010	DIAPHRAGM - transmission	1
	C 38011	KIT - seal	1
	C 38012	KIT - reservoir, transmission	1
23	129- 105	NUT - 1/2" - 13	4
24	C 26246	SEAL - oil	2
25	C 37664	KEY - woodruff 1/8" x 1/2"	2
	C 37626	BRAKE ASSEMBLY - L.H.	1
	C 37625	BRAKE ASSEMBLY - R.H.	1
26	NSS	CALIPER - brake	1
27	C 38016	LEVER - caliper L.H.	1
27	C 38017	LEVER - caliper R.H.	1
28	C 37627	PAD - brake (set)	1
29	C 38018	BRACKET - caliper	1
30	C 37724	COLLAR - caliper rod	1
31	C 37698	ARM - transmission L.H.	1
31	C 37699	ARM - transmission R.H.	1
32	C 42895	BUSHING - cable end	2
33	C 42896	END - steering cable	2
34	C 37705	CABLE - steering	2
35	C 37616	CLAMP - steering cable	2
36	192- 23	LOCKWASHER - 1/2"	4
37	113- 241	BOLT - 3/8" - 16 x 3"	8
38	192- 21	LOCKWASHER - 3/8"	8
39	129- 103	NUT - 3/8" - 16	8
40	192- 20	LOCKWASHER - 5/16"	5
41	195- 104	WASHER - 3/8"	4
42	113- 412	BOLT - 1/2" - 13 x 1-3/4"	4
43	113- 103	BOLT - 5/16" 18 x 1"	5
44	195- 102	WASHER - 1/4"	4
45	131- 71	NUT - 1/4" - 20 lock	6
46	113- 4	BOLT - 1/4" - 20 x 1"	2
47	C 37598	NUT - #10 - 32 lock	4
48	111- 366	BOLT - carriage 3/8" - 18 x 1-1/4"	4
49	131- 1352	NUT - 3/8" - 16 flange lock	2
50	C 15557	SHIM - .050"	2
51	C 15556	SHIM - .010"	2
52	138- 138	PIN - roll 1/4" x 1-1/2"	1

UAR
1

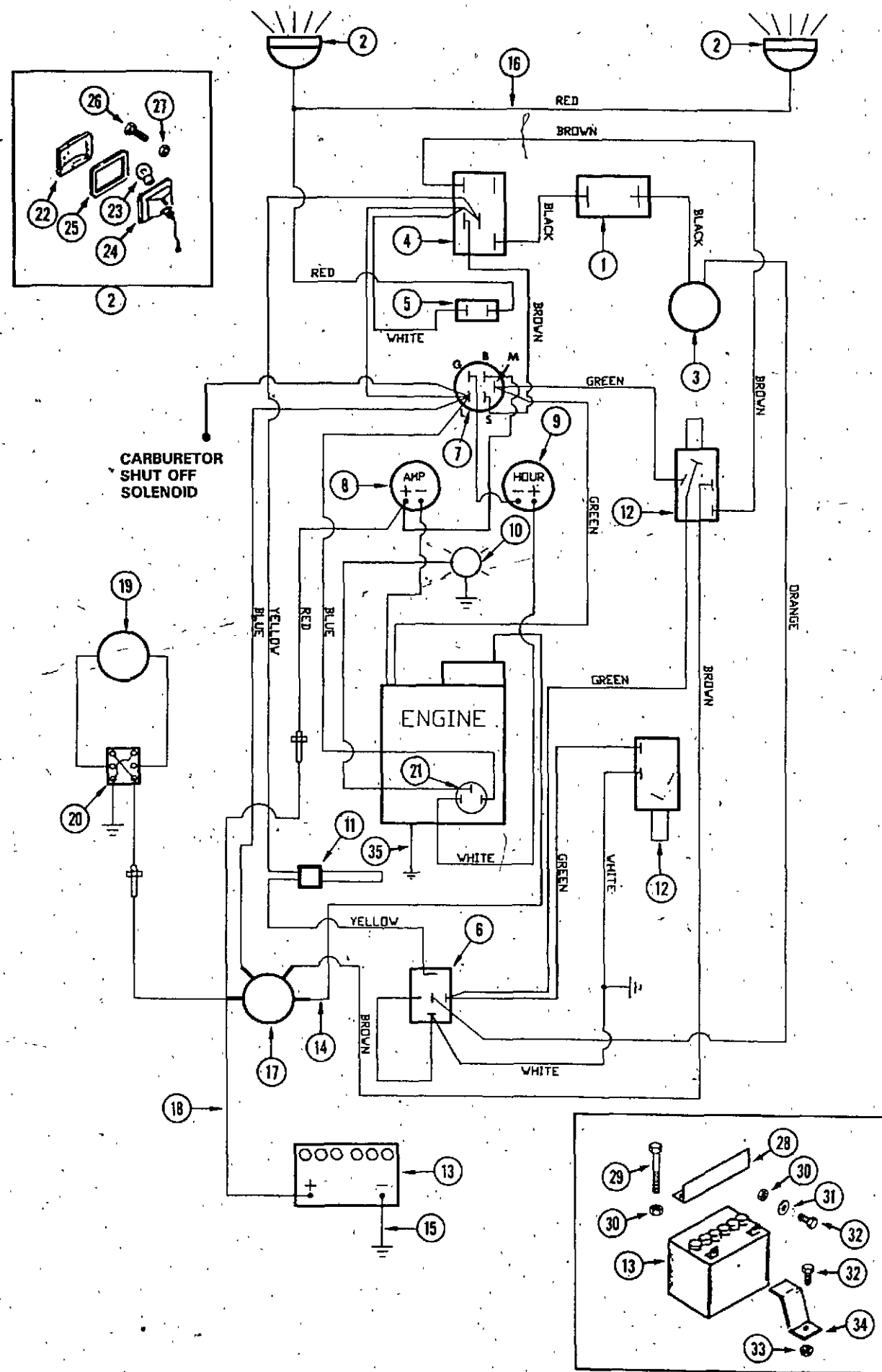
DRIVE PULLEY AND CROSS SHAFT (TRANSMISSION)



REF.	PART NO.	DESCRIPTION	REQ'D
1	C 37995	BELT - transmission drive	1
2	126- 9	KEY - woodruff 1/8" x 1/2"	2
3	C 37694	HUB - drive plate	1
4	C 37702	SPACER - bolt	4
5	C 38014	FAN - CCW	1
6	C 37700	PLATE - drive	2
7	C 37704	WASHER - 1/4" 10 ga	6
8	C 38015	SHAFT - cross	1
9	C 37703	SPACER	2
10	C 38019	FAN - CW	1
11	C 37695	PULLEY - drive (includes drive plate)	1
12	113- 121	BOLT - 5/16" - 18 x 2"	UAR
12	113- 104	BOLT - 5/16" - 18 x 1-1/4"	UAR
12	113- 103	BOLT - 5/16" - 18 x 1"	UAR
13	192- 20	LOCKWASHER - 5/16"	8
14	129- 102	NUT - 5/16" - 18	8

ELECTRICAL SYSTEM

G1250 - All
G1600 - before S/N 952501020



REF.	PART NO.	DESCRIPTION	REQ'D
	C 42241	HARNES - wire	1
1	C 37505	BREAKER - circuit, 10 amp	1
2	NSS	HEADLIGHT - (use C32178 and C44075)	2
3	C 37511	CLUTCH - PTO, electric	1
4	C 31937	SWITCH - PTO (also use C31619 cap)	1
5	C 43044	SWITCH - headlight	1
6	C 37515	RELAY	1
	113- 3	BOLT - 1/4" - 20 x 3/4" (relay mounting)	1
	192- 19	LOCKWASHER - 1/4" (relay mounting)	1
	121- 101	NUT - 1/4" - 20 (relay mounting)	1
7	C 24145	SWITCH - ignition (use C32407 key)	1
7A	C 32397	CAP - nut (ignition switch mounting)	1
7B	193- 63	LOCKWASHER - 5/8" (ignition switch mounting)	1
7C	C 32396	NUT - 5/8" - 32 (ignition switch mounting)	1
8	C 29413	AMMETER	1
9	C 42929	METER - hour	1
10	C 37519	LIGHT - oil	1
11	C 37520	SWITCH - seat	1
12	C 37521	SWITCH - safety (enlarge mounting hole if required)	2
12A	182- 525	SCREW - #10 - 32 x 3/8" (safety switch mount)	1
12B	192- 18	LOCKWASHER - 3/16" (safety switch mount)	1
13	C 41010	BATTERY - 12 volt	1
14	C 37523	WIRE - starter	2
15	C 37528	CABLE - ground	1
16	C 37525	WIRE - headlight (with female terminals) early production	1
16	C 44075	WIRE - headlight (with 2 male terminals) current production	1
17	C 37526	SOLENOID - starting	1
	113- 3	BOLT - 1/4" - 20 x 3/4" (solenoid mounting)	2
	192- 19	LOCKWASHER - 1/4" (solenoid mounting)	2
	129- 101	NUT - 1/4" - 20 (solenoid mounting)	2
	192- 20	LOCKWASHER - 5/16" (solenoid studs)	2
	129- 102	NUT - 5/16" - 18 (solenoid studs)	2
	192- 18	LOCKWASHER - 3/16" (solenoid studs)	2
	129- 37	NUT - #10 - 32 (solenoid studs)	1
	129- 6	NUT - #8 - 32 (solenoid studs)	1
18	C 37523	WIRE - battery positive to solenoid	1
19	C 37529	ACTUATOR - electric lift (early production) optional	1
20	C 37530	SWITCH - deck lift (early production) optional	1
21	C 37531	SWITCH - oil light	1
22	C 22573	LENS - headlight	2
23	C 28932	BULB - headlight (#1156)	2
23	C 37508	BULB - headlight (#1141)	2
24	NSS	RECEPTICAL - headlight (use C32178, C44075)	2
25	C 14304	GASKET - headlight	2
26	113- 4	BOLT - 1/4" - 20 x 1"	2
27	129- 101	NUT - 1/4" - 20	2
28	C 37983	BRACKET - battery hold down	1
29	C 38677	BOLT - 1/4" - 20 x 7"	2
30	129- 101	NUT - 1/4" - 20	2
30	131- 71	NUT - 1/4" - 20 lock	UAR
31	195- 102	WASHER - 1/4"	3
32	113- 3	BOLT - 1/4" - 20 x 3/4"	3
33	131- 934	NUT - 1/4" - 20 flange lock	1
34	NSS	PROTECTOR - battery post (use C24069)	1
35	C 41643	WIRE - engine ground	1

