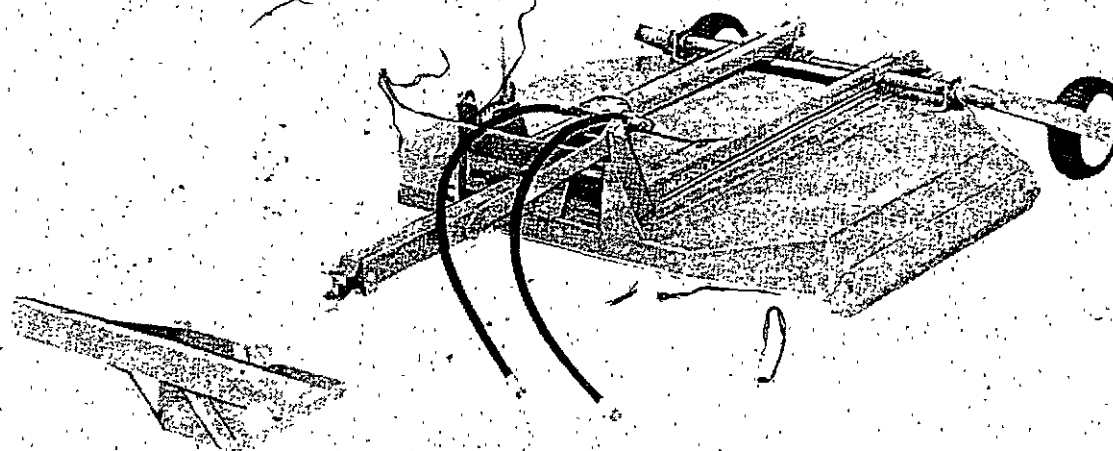


**HYDRACUTTER**  
**1048, HC48, AHC48**  
**Parts Catalog 8-3001**

**ALPHABETICAL INDEX**

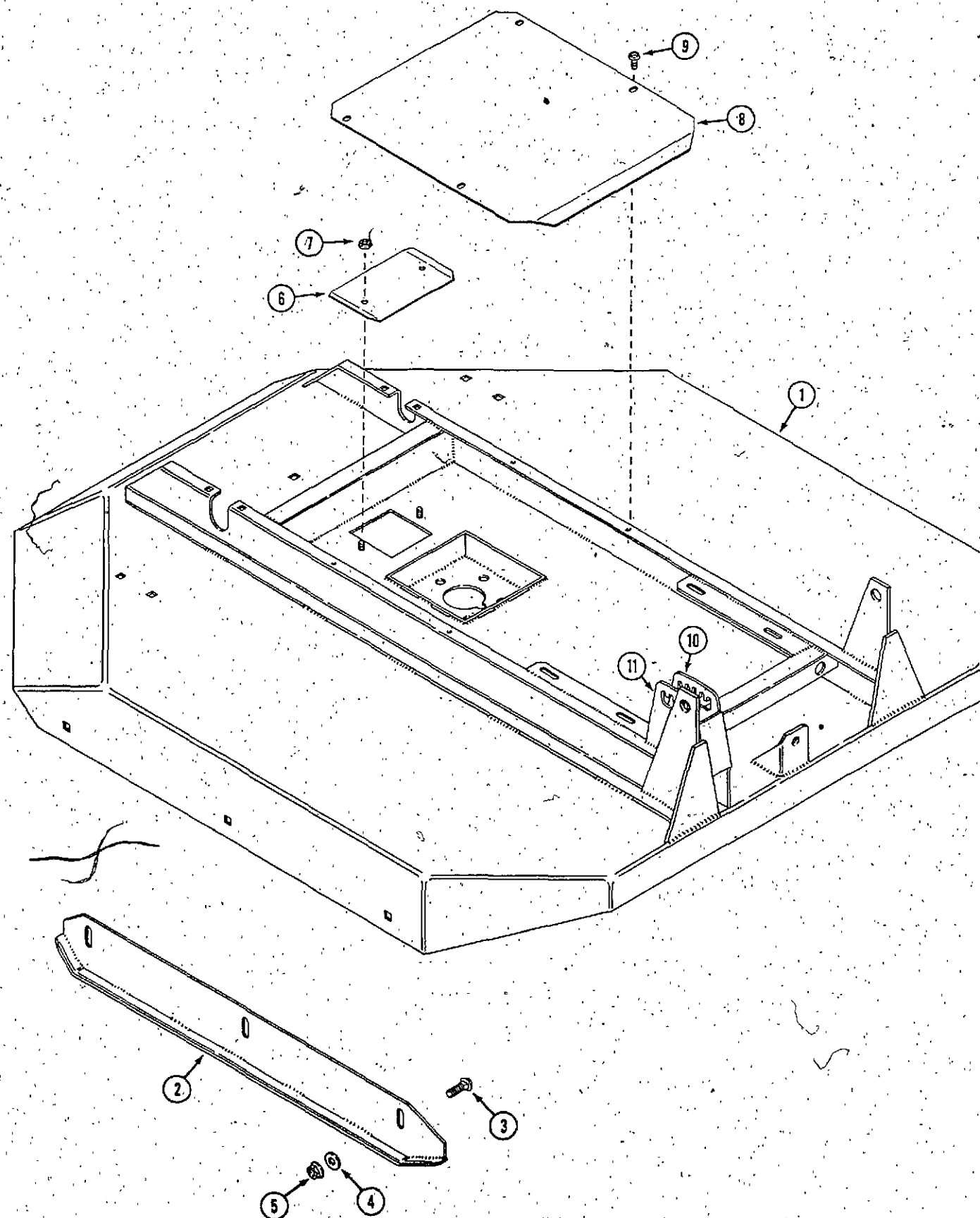
	Page	Grid
Axle .....	17	B2
Belt .....	7	A6
Blade .....	7	A6
Bumper .....	9	A8
Decals .....	21	B6
Deck .....	5	A4
Height Adjust Lever .....	19	B4
Hitch .....	17	B2
Hydraulics .....	9-15	A8-A14
Motor .....	15	A14
Pulleys .....	7	A6
Skid Shoes .....	5	A4
Spindle .....	7	A6



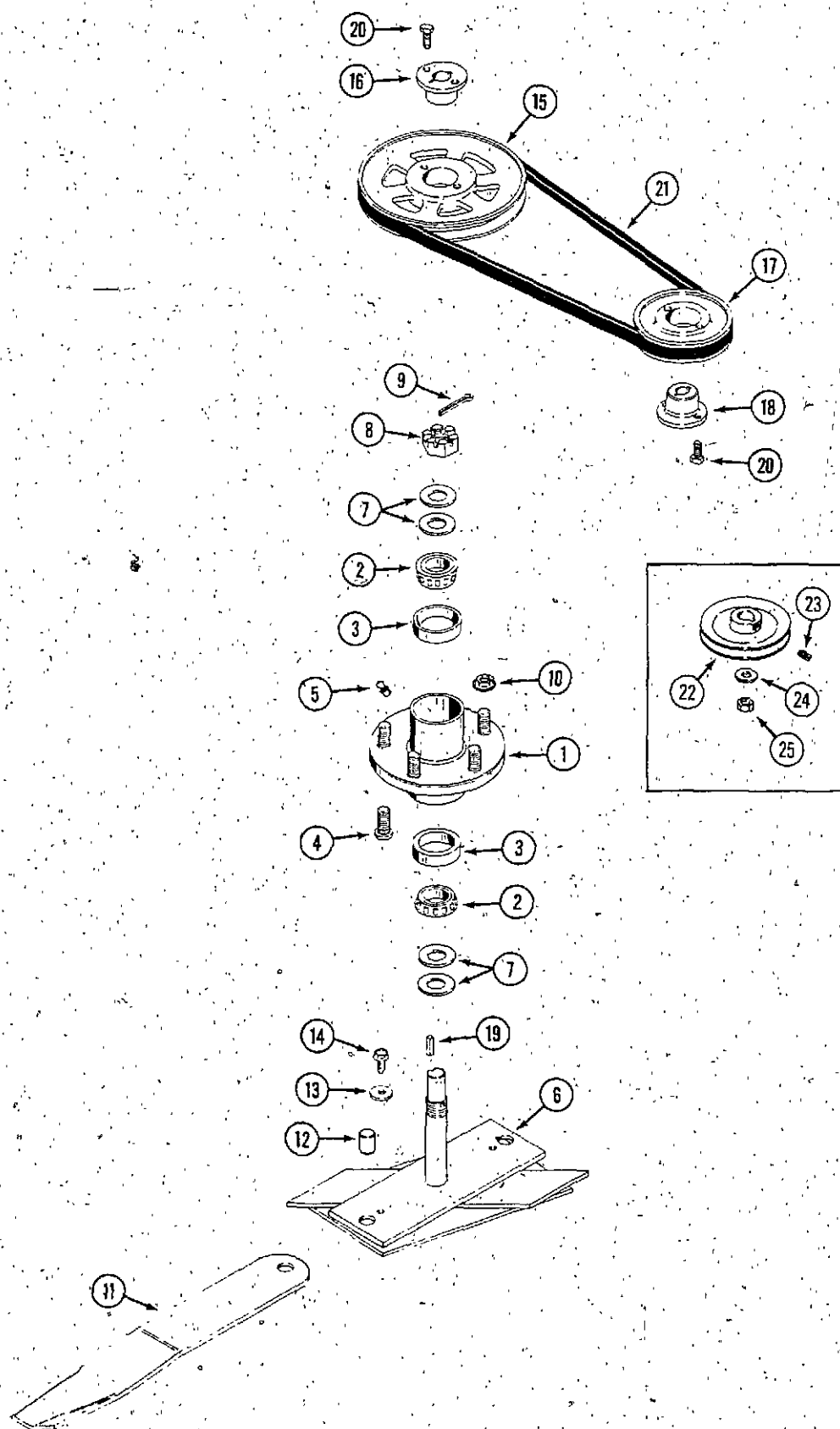
**ATTACHMENT APPLICATION**

MODEL	SIZE	TRACTOR MODE
1048, HC48	48" (1220 mm)	200, 400 Series 3000, 4000 Series 600, 6000 Series
AHC48	48" (1220 mm)	4118, 3118 4118D, 3118D

**NOTE:** Requires Hydraulic PTO Attachment and Case Drain

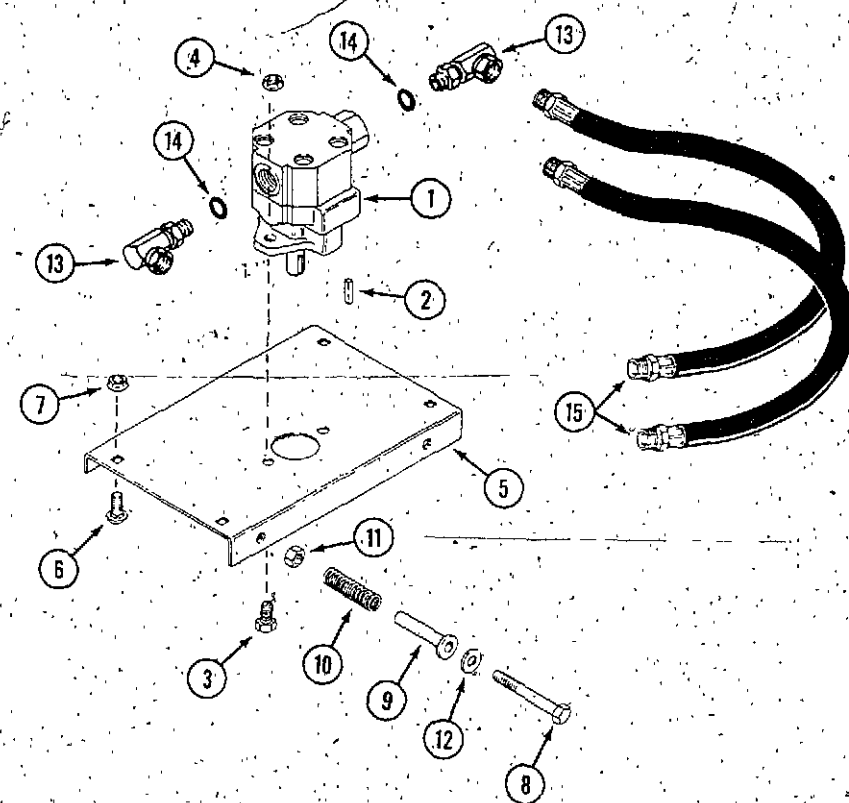


REF.	PART NO	DESCRIPTION	REQ'D
1	C29544	DECK - mower	1
2	C29564	SHOE - skid	2
3	111-371	BOLT - 3/8" - 16 x 1" carriage	6
4	195-104	WASHER - 3/8"	6
5	131-938	NUT - 3/8" - 16 lock	6
6	C29578	COVER - blade access hole	1
7	131-911	NUT - 5/16" - 18 lock	2
8	C29582	COVER - belt	1
9	187-1036	SCREW - 1/4" - 20 x 1/2" self tap	4
10	C29560	QUADRANT - inner (is part of deck weldment)	1
11	C29561	QUADRANT - outer (is part of deck weldment)	1



## SPINDLE, BELT AND PULLEYS

REF.	PART NO	DESCRIPTION	REQ'D
1	C29709	HUB ASSEMBLY - spindle	1
2	C28262	BEARING - cone	2
3	C28988	RACE - bearing	2
4	C18300	STUD - mounting	5
5	219-10	FITTING - lubrication	1
6	C29569	SPINDLE	1
7	C29575	WASHER - spacer	4
8	129-291	NUT - 1" - 14 slotted	1
9	132-306	PIN - cotter 3/16" x 1-3/4"	1
10	131-913	NUT - 1/2" - 20 lock	5
11	C29540	BLADE - cutting	2
12	C29576	PIN - blade retaining	2
13	C29577	WASHER - retaining	2
14	121-106	BOLT - 5/16" - 18 x 1/2" lock	2
15	C29543	PULLEY - spindle	1
16	C29579	BUSHING - pulley 7/8"	1
17	C29542	PULLEY - hydraulic motor (1048, HC48) (before PIN 150602001)	1
17	C42386	PULLEY - hydraulic motor (AHC48) (before PIN 150603001)	1
18	C29580	BUSHING - pulley 5/8" (1048, HC48) (before PIN 150404001)	1
18	C42385	BUSHING - pulley 3/4" (AHC48 before PIN 150603001) (HC48 PIN 150404001 to 150602001)	1
19	C29581	KEY - 3/16" x 3/16" x 1"	1
20	113-3	BOLT - 1/4" - 20 x 3/4"	4
21	C29541	BELT - drive (1048, HC48)	1
21	C42384	BELT - drive (AHC48)	1
22	C46204	PULLEY - hydraulic motor (HC48 PIN 150602001 and after)	1
22	C45883	PULLEY - hydraulic motor (AHC48 PIN 150603001 and after)	1
23	83-55	SCREW - set 5/16" - 18	2
24	195-2067	WASHER - 7/16"	1
25	131-C5	NUT - 7/16" - 20 lock	1



REF.	PART NO
1	NSS
	C30053
	C29625
2	C29581
3	113-207
4	131-1352
5	C29623
6	111-132
7	131-911
8	123-101
9	C25829
10	C25688
11	129-102
12	195-520
13	218-5201
14	218-5007
15	C28320
	111-340*
	131-938*

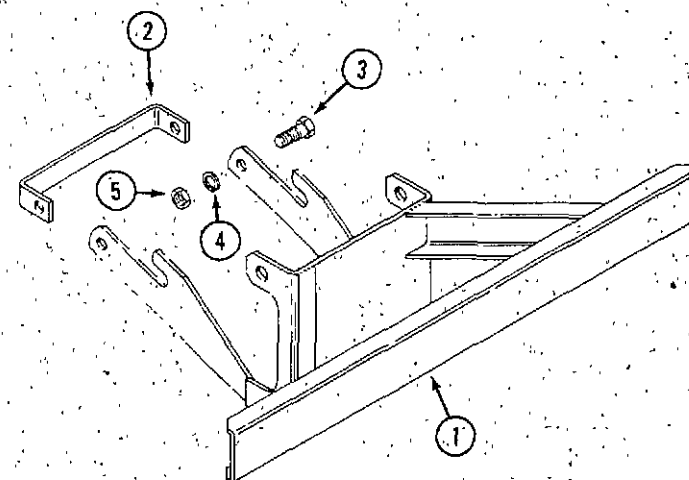
DESCRIPTION	REQ'D
MOTOR - hydraulic (use C46508 Kit)	1
KIT - motor repair (includes carrier and seal kit)	1
KIT - seal	1
KEY - motor shaft	1
BOLT - 3/8" - 16 x 1"	2
NUT - 3/8" - 16 lock	2
PLATE - mounting	1
BOLT - 5/16" - 18 x 3/4" carriage	4
NUT - 5/16" - 18 lock	4
BOLT - 5/16" - 18 x 4"	2
SPACER - flanged	2
SPRING - compression	2
NUT - 5/16" - 18	2
WASHER - 5/16" x 7/8"	2
FITTING - 7/8" - 14 "O" ring, 1/2" pipe, 90°	2
"O" - RING	1
HOSE - hydraulic	2
BOLT - 3/8" - 16 x 3/4" carriage	1
NUT - 3/8" - 16 lock	1

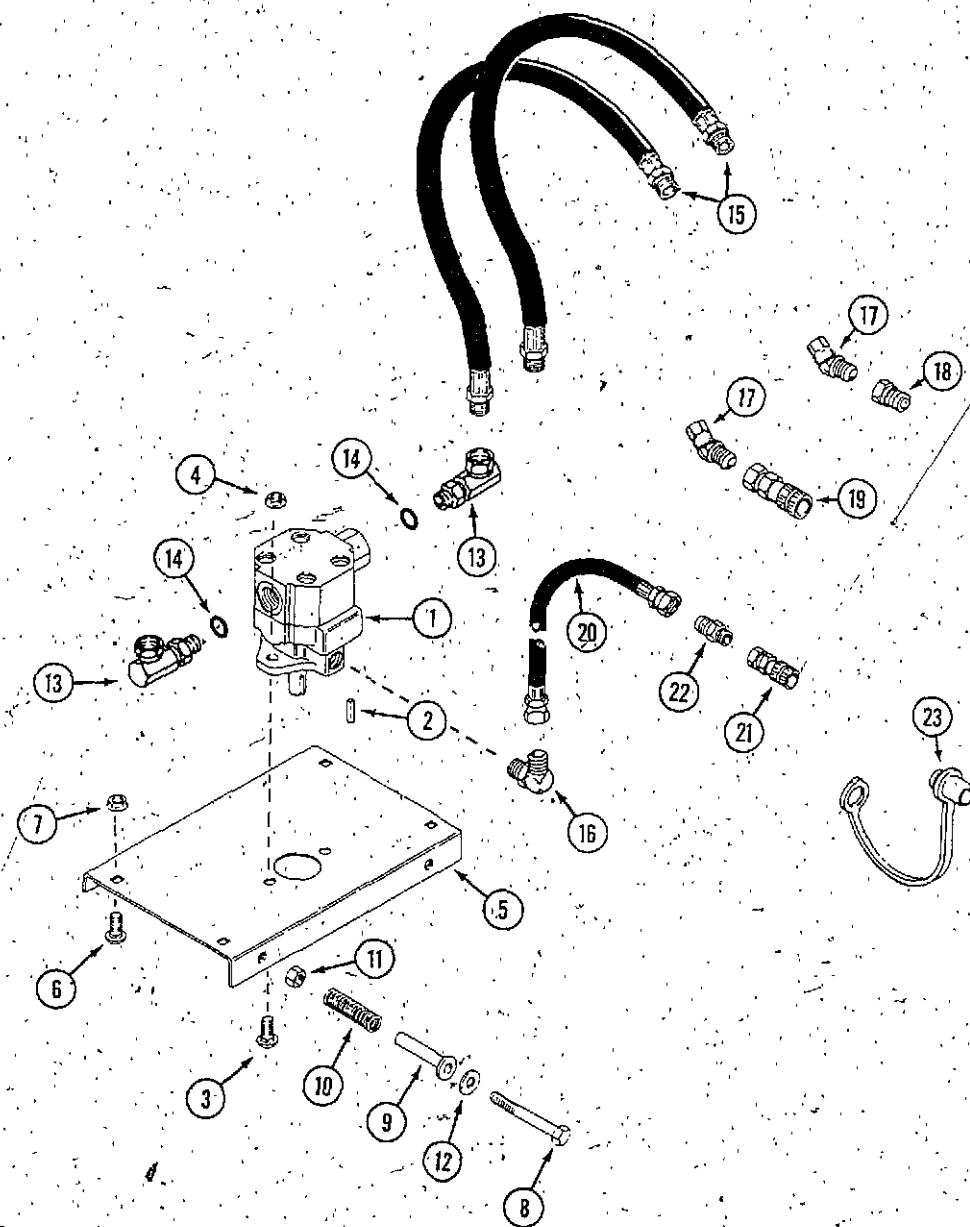
\* Use in PTO bracket to prevent incorrect handle operation

### BUMPER

1	C29612
2	C17161
3	113-417
4	192-23
5	129-105

BUMPER - front	1
BRACE - rear	1
BOLT - 1/2" - 13 x 1-1/4"	2
LOCKWASHER - 1/2"	2
NUT - 1/2" - 13	2



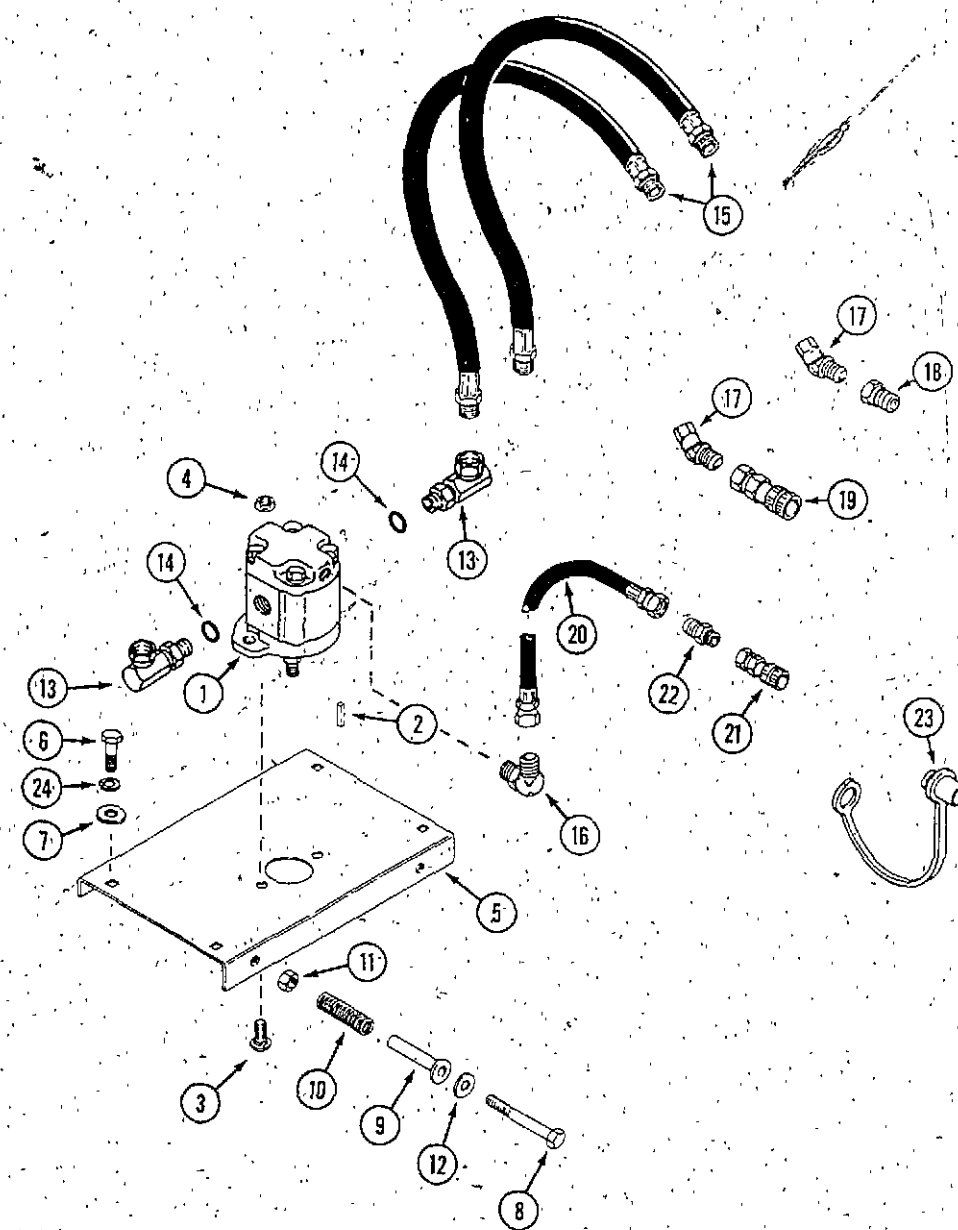


## HYDRAULIC DRIVE

(AHC48 Before PIN 150603001)

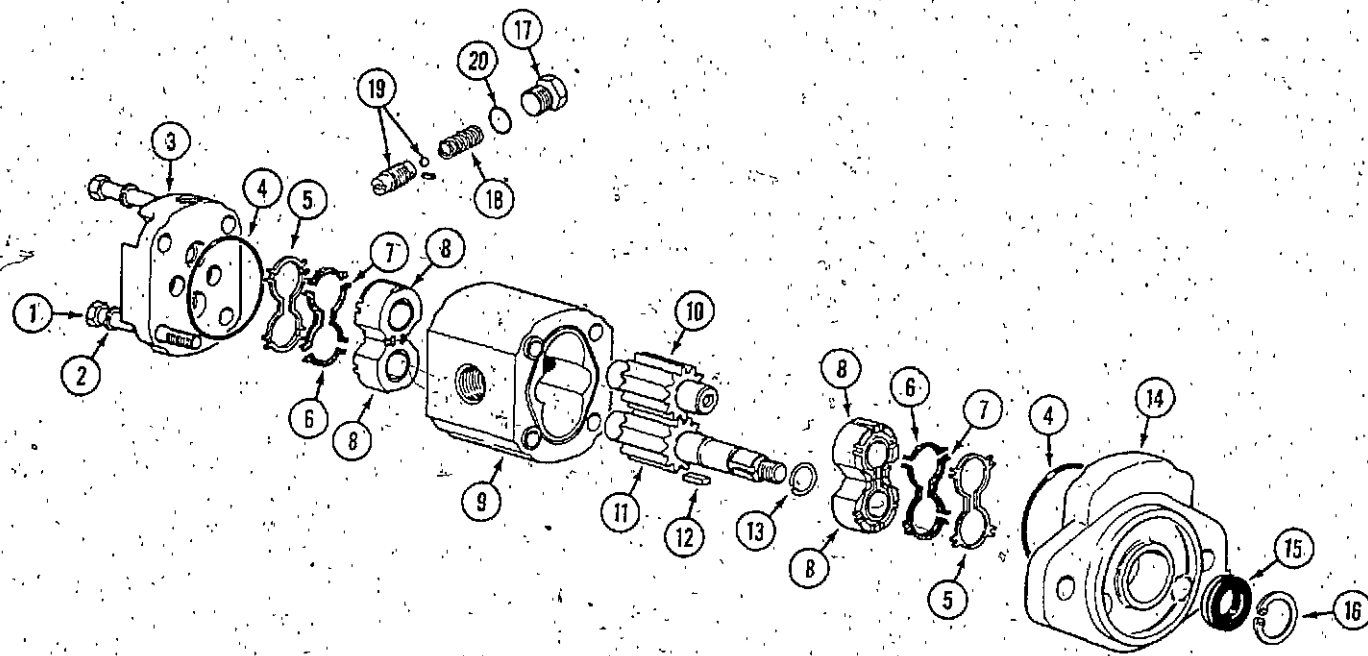
(HC48 PIN 150404001 to 150602001)

REF.	PART NO.	DESCRIPTION	REQ'D
1	NSS	MOTOR - hydraulic (AHC48 use C46217 Kit) (HC48 use C46216 Kit)	1
2	C40815	KIT - seal	1
3	C29581	KEY - motor shaft	1
4	111-366	BOLT - 3/8" - 16 x 1-1/4" carriage	2
5	131-1352	NUT - 3/8" - 16 lock	2
6	C42388	PLATE - mounting	1
7	111-132	BOLT - 5/16" - 18 x 3/4" carriage	4
8	131-911	NUT - 5/16" - 18 lock	4
9	123-101	BOLT - 5/16" - 18 x 4"	2
10	C25829	SPACER - flanged	2
11	C25688	SPRING - compression	2
12	129-102	NUT - 5/16" - 18	2
13	195-520	WASHER - 5/16" x 7/8"	2
14	218-5201	FITTING - 7/8" - 14 "O" ring, 1/2" pipe, 90°	2
15	218-5007	"O" - RING	1
16	C33865	HOSE - hydraulic 48" (HC48)	2
17	C42077	HOSE - 1/2" x 48" (AHC48)	1
18	C40724	HOSE - 1/2" x 56 (AHC48)	1
19	218-5135	FITTING - 9/16" - 18 x 3/8", 45° (AHC48)	1
20	218-5105	FITTING - 9/16" - 18 x 9/16", 90° (HC48)	1
21	217-1086	ELBOW - 45° (AHC48)	1
22	C37187	COUPLER - quick, male 1/2"	1
23	C37188	COUPLER - quick, female 1/2"	1
24	C42412	HOSE - 1/4" x 44" (AHC48) shown	1
25	C37394	HOSE - 1/4" x 51 (HC48)	1
26	C41044	COUPLER - quick, female 1/4"	1
27	218-443	FITTING - 3/8" X 9/16 - 18 (HC48)	1



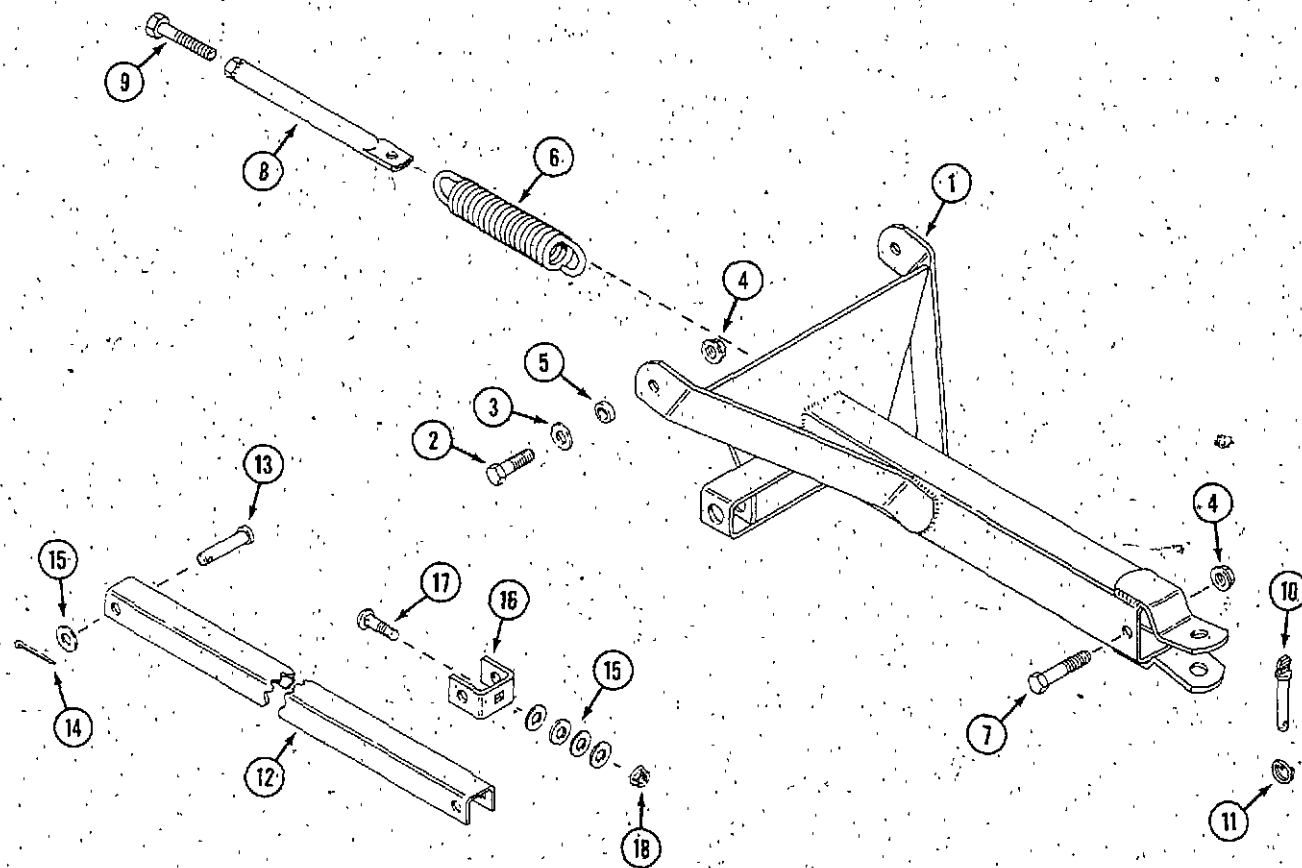
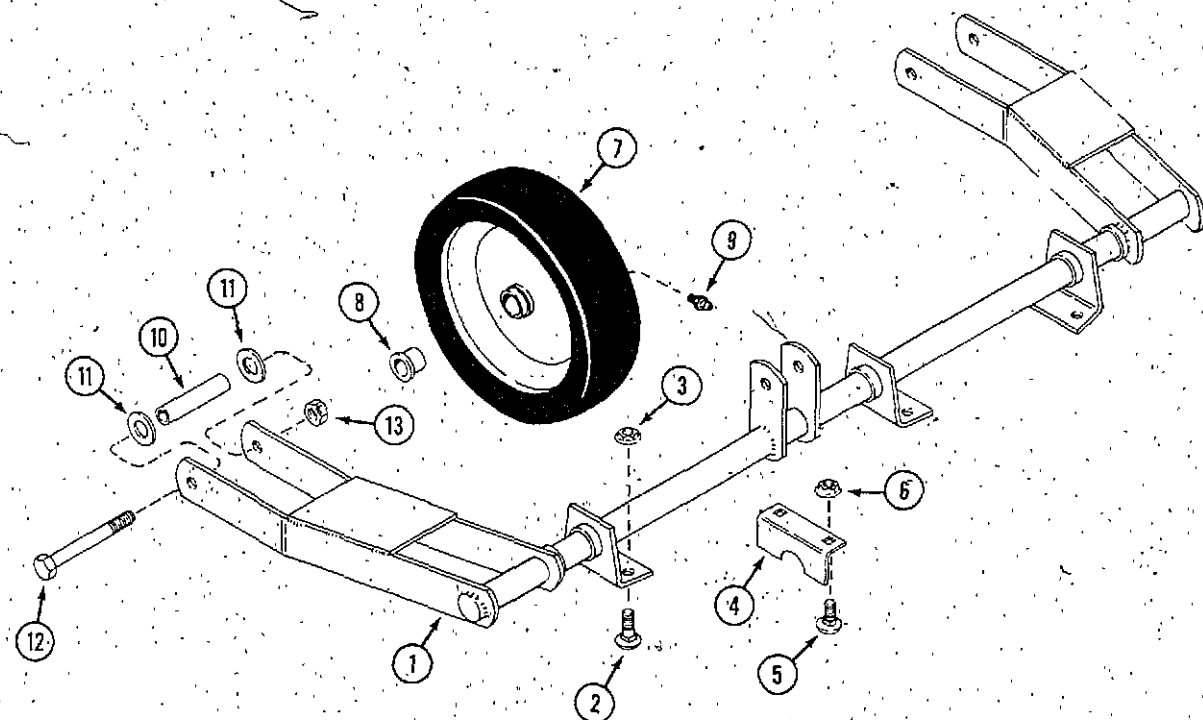
**HYDRAULIC DRIVE**  
**(AHC48 PIN 150603001 and after)**  
**(HC48 PIN 150602001 and after)**

REF	PART NO.	DESCRIPTION	REQ'D
1	C46235	MOTOR - hydraulic	1
2	C46237	KEY - motor shaft	1
3	111-366	BOLT - 3/8" - 16 x 1-1/4" carriage	2
4	131-1352	NUT - 3/8" - 16 lock	2
5	C46333	PLATE - mounting	1
6	113-102	BOLT - 5/16" - 18 x 3/4"	4
7	195-103	WASHER - 5/16"	4
8	123-101	BOLT - 5/16" 18 x 4"	2
9	C25829	SPACER - flanged	2
10	C25688	SPRING - compression	2
11	129-102	NUT - 5/16" - 18	2
12	195-520	WASHER - 5/16" x 7/8"	2
13	218-5201	FITTING - 7/8" - 14 "O" ring, 1/2" pipe, 90°	2
14	218-5007	"O" - RING	1
15	C40724	HOSE - hydraulic 1/2" x 56" (HC48)	2
15	C42077	HOSE - 1/2" x 48" (AHC48)	1
15	C40724	HOSE - 1/2" x 56" (AHC48)	1
16	218-5105	FITTING - 9/16" - 18 x 9/16" 90°	1
17	218-1086	ELBOW - 45° (AHC48)	2
18	C37187	COUPLER - quick, male 1/2"	1
19	C37188	COUPLER - quick, female 1/2"	1
20	C37394	HOSE - 1/4" x 51"	1
21	C41044	COUPLER - quick, female 1/4"	1
22	218-443	FITTING - 3/8" x 9/16" - 18	1
23	C33404	CAP - dust	1



## HYDRAULIC MOTOR

REF.	PART NO.	DESCRIPTION	REQ'D
1	NSS	BOLT	4
2	NSS	LOCKWASHER	4
3	NSS	COVER - end	1
4	NSS	"O" RING - body (included in seal kit)	2
5	NSS	SEAL - backup (included in seal kit)	2
6	NSS	SEALS - bushings (included in seal kit)	4
7	NSS	SEALS - bushings (included in seal kit)	4
8	NSS	BUSHING	4
9	NSS	BODY	1
10	NSS	GEAR - driven	1
11	NSS	SHAFT AND GEAR - drive	1
12	C46237	KEY - square 3/16" x 3/4" (included in seal kit)	1
13	NSS	RING - retaining (included in seal kit)	1
14	NSS	FLANGE - mounting	1
15	C43748	SEAL - oil (included in seal kit)	1
16	NSS	RING - retaining (included in seal kit)	1
17	NSS	CAP - check valve	1
18	NSS	SPRING - check valve	1
19	NSS	VALVE - check	1
20	NSS	"O" RING - cap (included in seal kit)	1
	C43747	KIT - seal	1



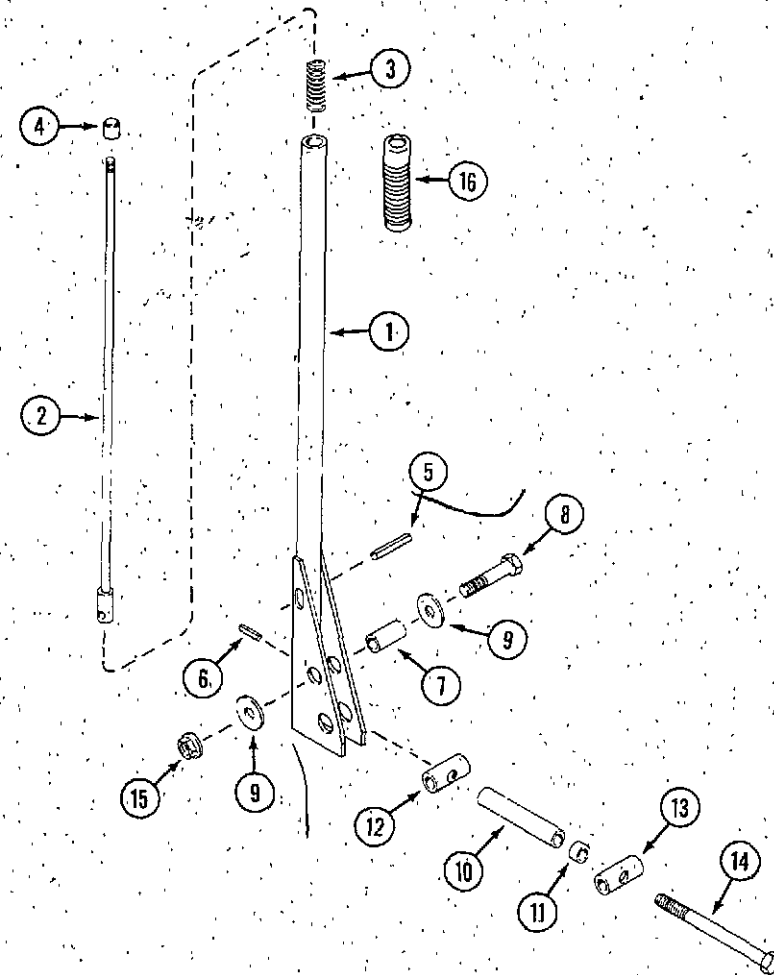
## AXLE

REF	PART NO.	DESCRIPTION	REQ'D
1	C29583	AXLE - gauge wheel	1
2	111-366	BOLT - 3/8" - 16 x 1-1/4" carriage	6
3	131-938	NUT - 3/8" - 16 lock	6
4	C29629	CLAMP - axle	2
5	111-132	BOLT - 5/16" - 18 x 3/4" carriage	4
6	131-911	NUT - 5/16" - 18 lock	4
7	C45889	WHEEL - gauge	2
8	C24503	BUSHING - flanged	2
9	219-10	FITTING - lubrication	1
10	C29590	SLEEVE - wheel	2
11	C12975	WASHER - 3/4" x 1-1/8"	4
12	22-880	BOLT - 1/2" - 13 x 5"	2
13	131-1182	NUT - 1/2" - 13 lock	2

## HITCH AND LEVELING LINK

1	C29591	TONGUE - hitch	1
2	113-417	BOLT - 1/2" - 13 x 1-1/4"	2
3	195-533	WASHER - 1/2"	2
4	131-930	NUT - 1/2" - 13 lock	3
5	C29598	BUSHING - sleeve	2
6	C29630	SPRING - assist	1
7	113-426	BOLT - 1/2" - 13 x 2-3/4"	1
8	C29599	LINK - assist spring	1
9	22-880	BOLT - 1/2" - 13 x 5"	1
10	C26795	PIN - hitch	1
11	C28105	RING - retaining	1
12	C29610	LINK - leveling	1
13	C29804	PIN - clevis	2
14	132-310	PIN - cotter	2
15	195-106	WASHER - 9/16"	6
16	C29611	BRACKET - leveling link	1
17	111-366	BOLT - 3/8" - 16 x 1-1/4" carriage	1
18	131-938	NUT - 3/8" lock	1





## HEIGHT ADJUST LEVER

REF.	PART NO.	DESCRIPTION	REQ'D
1	C29601	LEVER - height adjust	1
2	C29604	ROD - push	1
3	C15564	SPRING - compression	1
4	C14525	BUTTON - thumb	1
5	C29619	PIN - spirol 5/16" x 2"	1
6	C44068	PIN - spirol 1/4" x 1"	1
7	C29607	BUSHING - sleeve	1
8	113-426	BOLT - 1/2" - 13 x 2-3/4"	1
9	195-106	WASHER - 1/2"	2
10	C29631	SPACER - 4-1/2" long	1
11	C29632	SPACER - 5/16" long	1
12	C29608	NUT - tubular, swivel	1
13	C29609	SLEEVE - tubular, swivel	1
14	113-2419	BOLT - 1/2" - 13 x 6-1/2"	1
15	131-930	NUT - 1/2" - 13 lock	1
16	C39510	GRIP - lift	1

③  
**INGERSOLL**

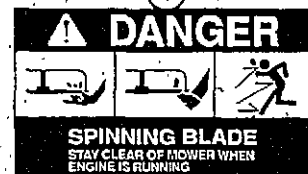
②  
①  
**hydracutter™**

⑥  
**CAUTION**

BE SURE HYDRAULIC PTO IS  
OFF BEFORE STARTING TRACTOR  
ENGINE.  
KEEP AWAY FROM MOWER  
WHEN ENGAGING PTO.  
BLADE CONTACT CAN INJURE.

⑦  
**CAUTION**

KEEP AWAY FROM MOWER  
WHEN ADJUSTING CUTTING  
HEIGHT.  
BLADE CONTACT CAN INJURE.



⑧  
**BELT TENSION ADJUSTMENT**  
1) LOOSEN FOUR BOLTS  
HOLDING MOTOR MOUNTING  
PLATE TO MOWER.

2) ADJUST BELT TENSIONING BOLTS  
UNTIL SPACERS PROJECT ONE INCH ON  
KEY THICKNESS. USE KEY AS A GAGE

3) TIGHTEN FOUR  
MOTOR MOUNTING  
PLATE BOLTS.

## DECALS

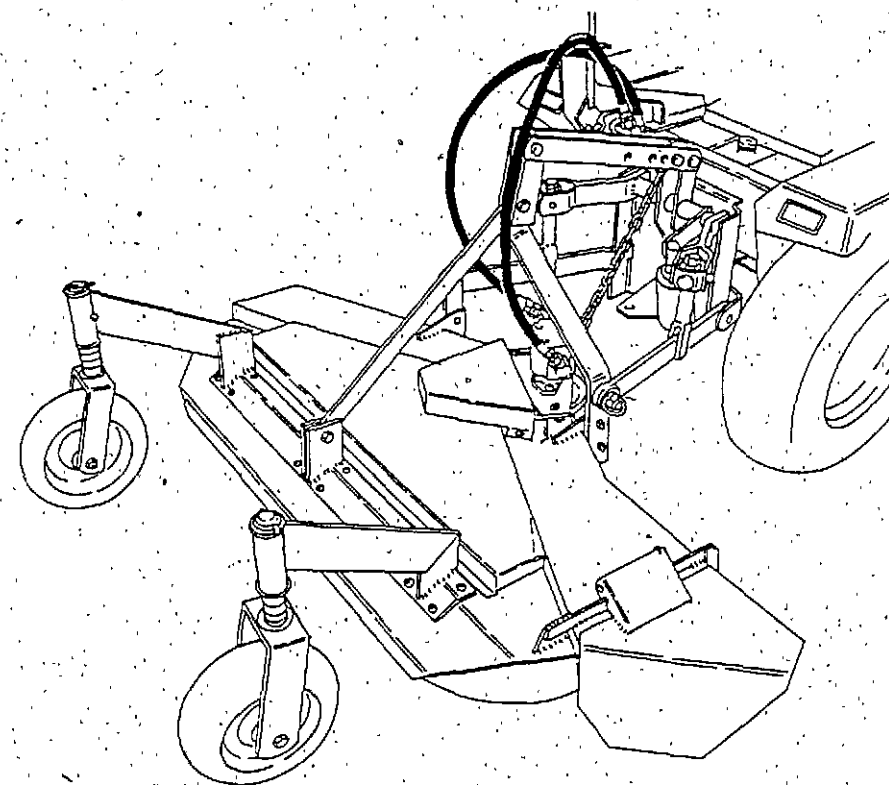
REF.	PART NO.	DESCRIPTION	REQ'D
1	C29617	DECAL - "Hydracutter (if required)"	2
2	C29073	DECAL - Stripe 52" (1320 mm) cut to length (if required)	UAR
3	C32093	DECAL - "Ingersoll" shown	3
4	C46323	DECAL - "Spinning Blade"	3
5	C29768	DECAL - "Flying Debris"	1
6	C29769	DECAL - hydraulic PTO	1
7	C29770	DECAL - height adjustment	1
8	C29880	DECAL - belt adjustment	1

## NUMERICAL INDEX

PART NO.	PAGE NO.	REF. NO.	PART NO.	PAGE NO.	REF. NO.	PART NO.	PAGE NO.	REF. NO.
C12975	17	11	C37188	13	19	131-1182	17	13
C14525	19	4	C37394	11	20	131-1352	9	4
C15564	19	3	C37394	13	20	131-1352	11	4
C17161	9	2	C39510	19	16	131-1352	13	4
C18300	7	4	C40724	11	15	132-306	7	9
C24503	17	8	C40724	13	15	132-310	17	14
C25688	9	10	C40724	13	15	187-1036	5	9
C25688	11	10	C40815	11	11	192-20	13	24
C25688	13	10	C41044	11	21	192-23	9	4
C25829	9	9	C41044	13	21	195-103	13	7
C25829	11	9	C42077	11	15	195-104	5	4
C25829	13	9	C42077	13	15	195-106	17	15
C26795	17	10	C42384	7	21	195-106	19	9
C28105	17	11	C42385	7	18	195-520	9	12
C28262	7	2	C42386	7	17	195-520	11	12
C28320	9	15	C42388	11	5	195-520	13	12
C28988	7	3	C42412	11	20	195-523	17	3
C29073	21	2	C43747	15	15	195-2067	7	24
C29540	7	11	C43748	15	15	217-1086	11	17
C29541	7	21	C44068	19	6	218-443	11	22
C29542	7	17	C44214	9	1	218-443	13	22
C29543	7	15	C45883	7	22	218-1086	13	17
C29544	5	1	C45889	17	7	218-5007	9	14
C29560	5	10	C46204	7	22	218-5007	11	14
C29561	5	11	C46235	13	1	218-5007	13	14
C29564	5	2	C46237	13	2	218-5105	11	16
C29569	7	6	C46237	15	12	218-5105	13	16
C29575	7	7	C46323	21	4	218-5135	11	16
C29576	7	12	C46333	13	5	218-5201	9	13
C29577	7	13	022-880	17	12	218-5201	13	13
C29578	5	6	022-880	17	9	219-10	7	5
C29579	7	16	083-55	7	23	219-10	17	9
C29580	7	18	111-132	9	6			
C29581	7	19	111-132	11	6			
C29581	9	2	111-132	17	5			
C29582	5	8	111-340	9				
C29583	17	1	111-366	11	3			
C29590	17	10	111-366	13	3			
C29591	17	1	111-366	17	2			
C29598	17	5	111-366	17	17			
C29599	17	8	111-371	5	3			
C29601	19	1	113-3	7	20			
C29604	19	2	113-102	13	6			
C29607	19	7	113-207	9	3			
C29608	19	12	113-417	9	3			
C29609	19	13	113-417	17	2			
C29610	17	12	113-426	17	7			
C29611	17	16	113-426	19	8			
C29617	21	1	113-2419	19	14			
C29619	19	5	121-106	7	14			
C29623	9	5	123-101	9	8			
C29625	9		123-101	11	8			
C29629	17	4	123-101	13	8			
C29630	17	6	128-5201	11	13			
C29631	19	10	129-102	9	11			
C29632	19	11	129-102	11	11			
C29709	7	1	129-102	13	11			
C29768	21	5	129-105	9	5			
C29769	21	6	129-291	7	8			
C29770	21	7	131-C5	7	25			
C29804	17	13	131-911	5	7			
C29880	21	8	131-911	9	7			
C299581	11	2	131-911	11	7			
C30053	9		131-911	17	6			
C31989	21	3	131-913	7	10			
C33404	11	23	131-930	17	4			
C33404	13	23	131-930	19	15			
C33865	11	15	131-938	5	5			
C37187	11	18	131-938	9				
C37187	13	18	131-938	17	3			
C37188	11	19	131-938	17	18			

# INGERSOLL

Ingersoll Equipment Co., Inc.



**HYDRAULIC MOWER  
AHRM4H, HRM48H  
Parts Catalog 8-3091**

9-96-RP-500

**TABLE OF CONTENTS**

	Page	Grid
Deck, Belt and Idler Pulley	5	C4
Mounting Bracket	7	C4
Rear Wheels	7	C6
Hydraulic Drive	8-13	C8-C12
Spindles and Blades	9	C8
Hydraulic Motor	15	C14
PTO Handle Stop Bracket	17	D2
Decals	17	D2

**APPLICATION CHART**

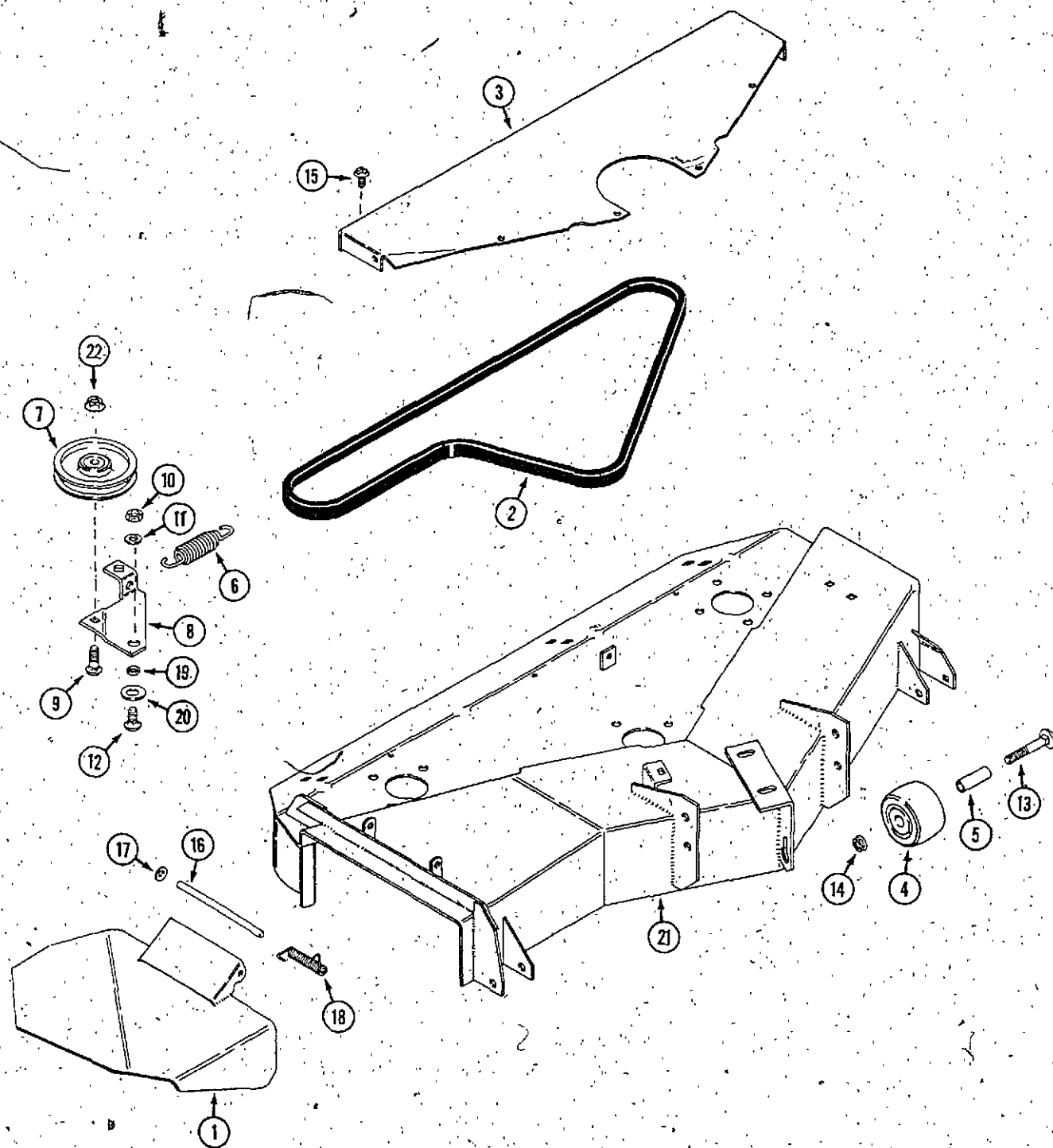
**MODEL**  
HRM48H

**TRACTOR**  
3014, 3016, 3018  
4014, 4016, 4018, 4020  
6018

AHRM4H

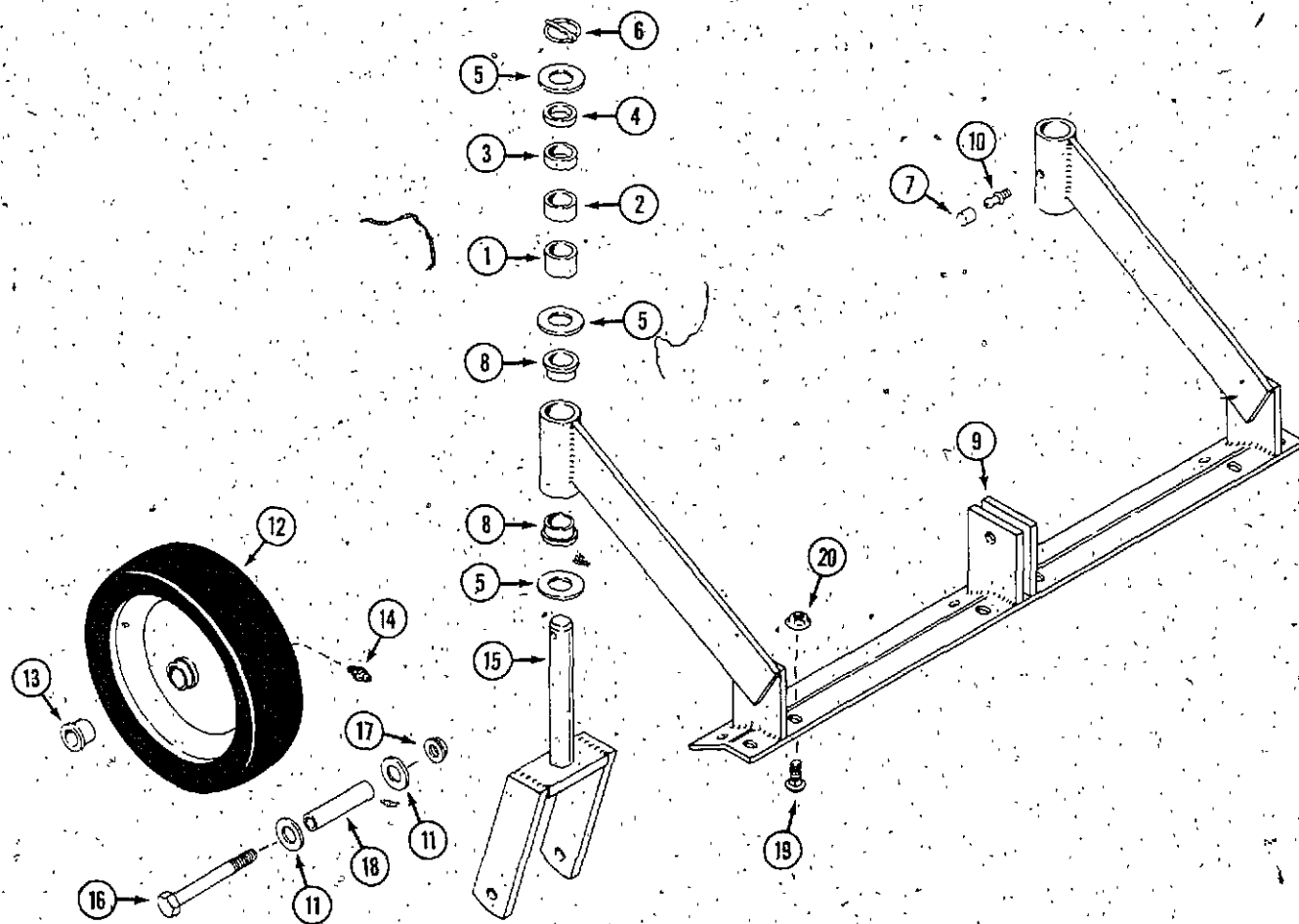
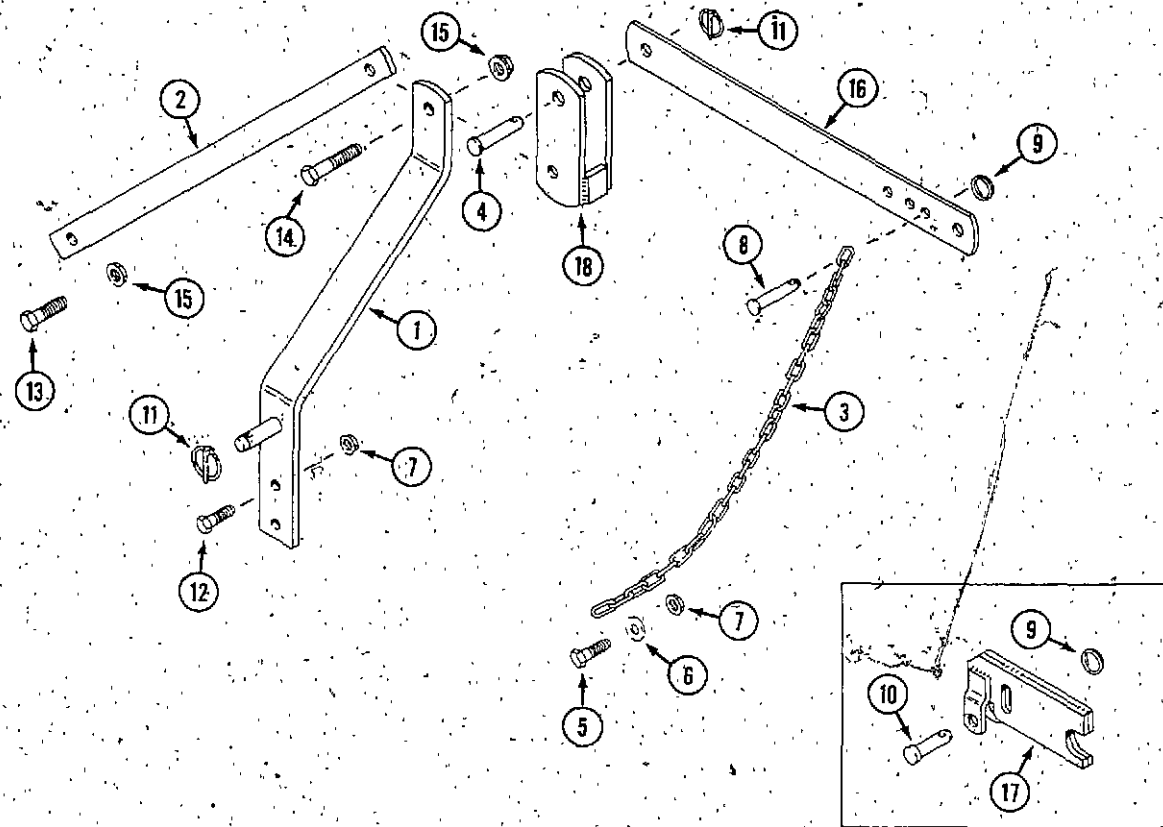
3118, 4118  
3118D, 4118D

Also requires 3 pt hitch and hydraulic PTO if not equipped.



## DECK, BELT AND IDLER PULLEY

REF.	PART NO	DESCRIPTION	REQ'D
1	C31502	EXTENSION - chute	1
2	C23950	BELT - deck	1
3	C31497	COVER - deck belt	1
4	C31500	ROLLER - anti - scalp	2
5	C31501	SPACER - sleeve	2
6	C31606	SPRING - idler	1
7	C12251	PULLEY - idler	1
8	C31608	PLATE - idler	1
9	111-366	BOLT - 3/8" - 16 x 1-1/4" carriage	1
10	131-1181	NUT - 3/8" - 16 lock	2
11	195-525	WASHER - 3/8"	2
12	111-371	BOLT - 3/8" - 16 x 1"	1
13	111-375	BOLT - 3/8" - 16 x 3" carriage	1
13	113-241	BOLT - 3/8" - 16 x 3" hexhead	1
14	131-938	NUT - 3/8" - 16 flange lock	2
15	187-1036	SCREW - 1/4" - 20 x 1/2" self tap	7
16	C30766	PIN - hinge	1
17	C30768	NUT - push	2
18	C31505	SPRING - chute	1
19	C14768	SPACER - sleeve	1
20	195-105	WASHER - 1/2"	1
21	C32759	DECK - mower	1

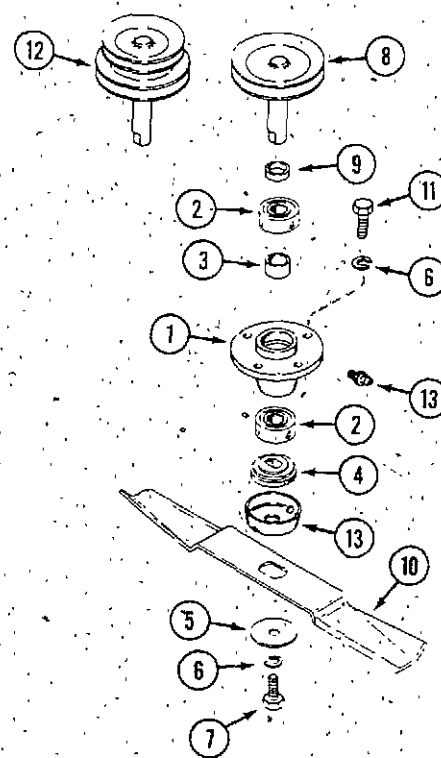
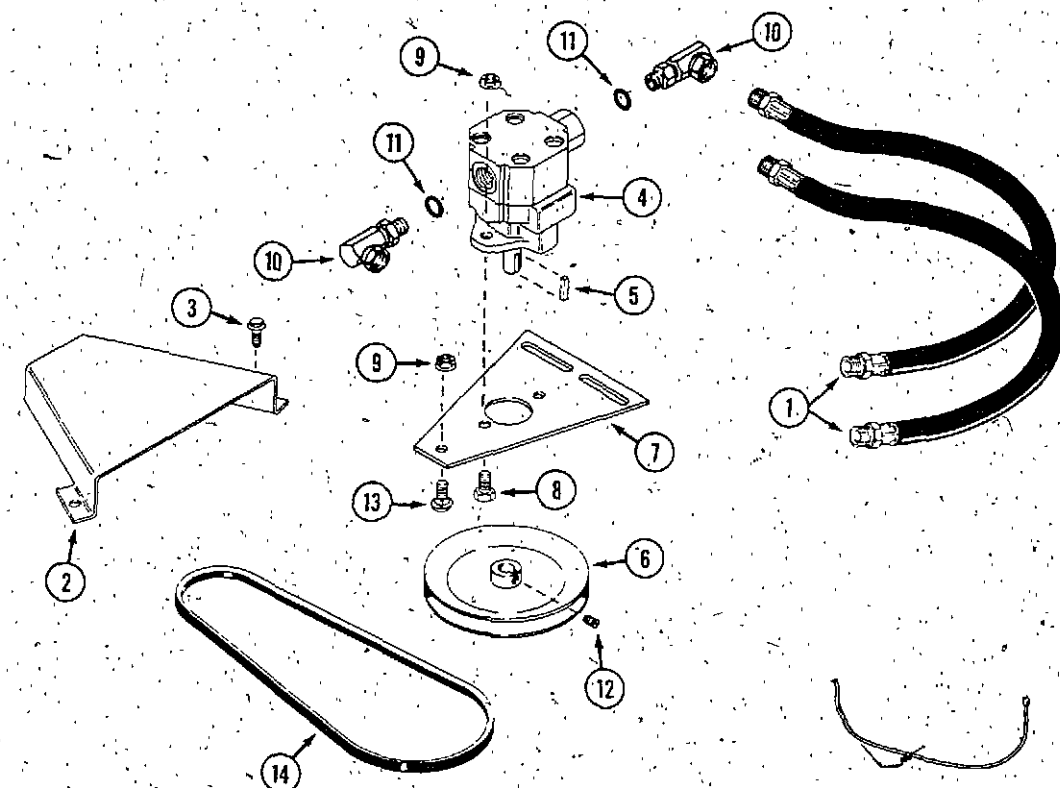


## MOUNTING BRACKET

REF.	PART NO.	DESCRIPTION	REQ'D
1	C32756	STRAP - side	2
2	C32784	LINK - front to rear	1
3	C32753	CHAIN - leveling	1
4	C16128	PIN - clevis	2
5	113-207	BOLT - 3/8" - 16 x 1"	1
6	195-2029	WASHER - 7/16" x 1-1/4"	2
7	129-938	NUT - 3/8" - 16 flange lock	5
8	C28266	PIN - clevis 3/8" x 2.6"	1
9	C28105	RING - retaining	3
10	C29693	PIN - clevis 1/2"	2
11	C28222	PIN - retaining	4
12	113-208	BOLT - 3/8" - 16 x 1-1/4"	4
13	113-412	BOLT - 1/2" - 13 x 1-3/4"	1
14	113-426	BOLT - 1/2" x 13 x 2-3/4"	1
15	131-1182	NUT - 1/2" - 13 lock	2
16	C33209	BAR - upper	1
17	C33210	ARM - lift cylinder	1
18	C32785	LINK - top	1

## REAR WHEELS

1	C32788	SPACER - 1"	2
2	C32789	SPACER - 3/4"	2
3	C32790	SPACER - 1/2"	2
4	C32791	SPACER - 1/4"	2
5	195-553	WASHER - 1" x 2"	6
6	C28222	PIN - retaining	2
7	C13106	COVER - grease fitting	4
8	C30562	BUSHING - flange	4
9	C32744	BRACKET - caster mounting	1
10	219-20	FITTING - lubrication 1/4" - 28"	2
11	C12975	WASHER - spacer	4
12	C30926	WHEEL - 10"	2
13	C24503	BUSHING - shoulder	2
14	219-10	FITTING - lubrication	1
15	C32743	CASTER - wheel	2
16	113-436	BOLT - 1/2" - 13 x 5-1/2"	2
17	131-930	NUT - 1/2" - 13 flange lock	2
18	C29590	SLEEVE - spacer	2
19	111-132	BOLT - 5/16" - 18 x 3/4" carriage	12
20	131-911	NUT - 5/16" - 18 flange lock	12



## HYDRAULIC DRIVE (HRM48H before PIN 010406094)

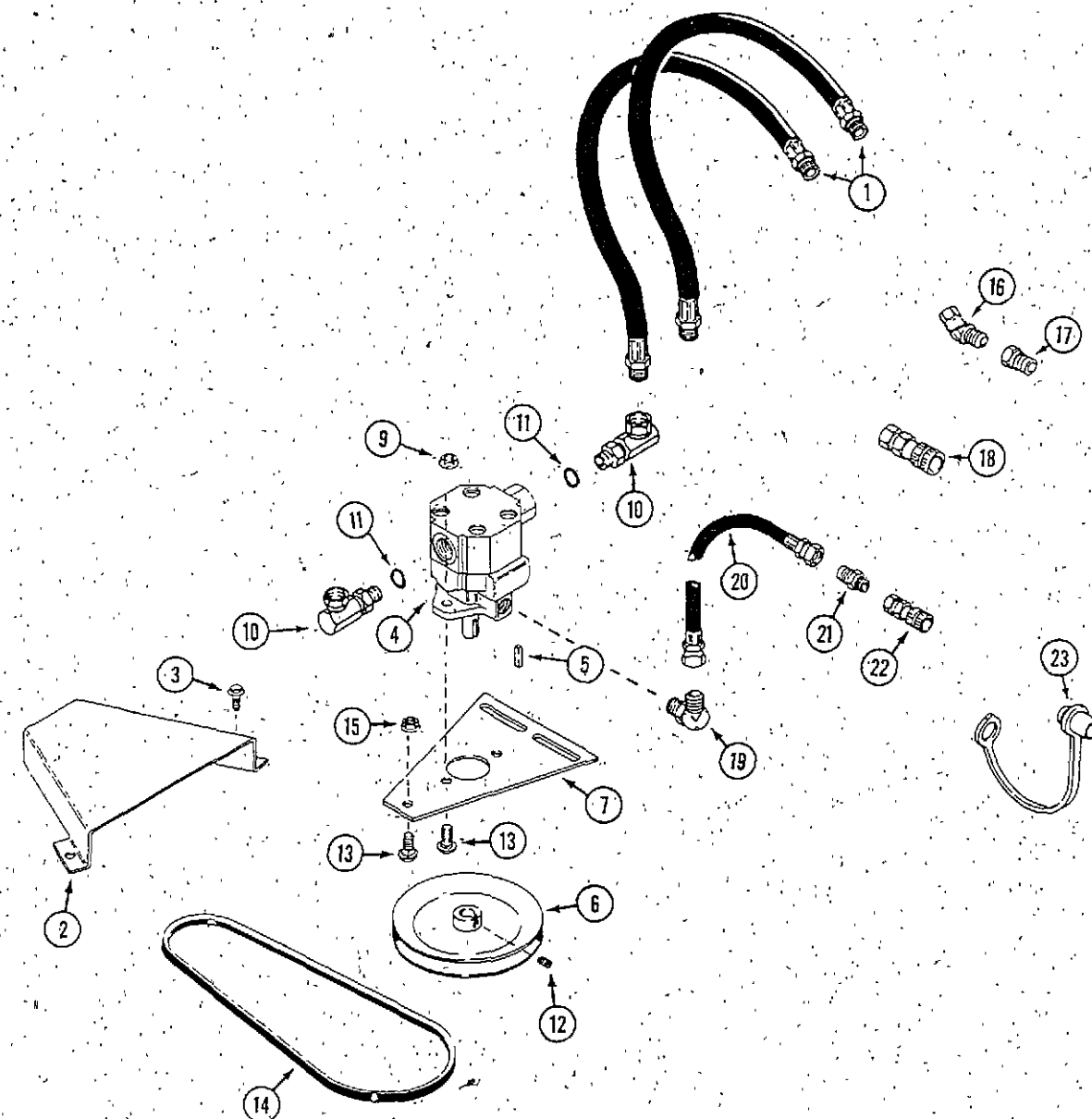
REF.	PART NO	DESCRIPTION	REQ'D
1	C28320	HOSE - hydraulic	2
2	C32536	COVER - drive belt	1
3	187-1036	SCREW - 1/4" - 20 x 1/2" self tap	3
4	NSS	MOTOR - hydraulic (use C46480 kit)	1
	C30053	KIT - repair (includes carrier and seal kit)	1
	C29625	KIT - seal	1
5	C29581	KEY - motor shaft 3/16" x 3/16" x 1"	1
6	C32535	PULLEY - 7" drive	1
7	C32751	PLATE - motor mount	1
8	113-207	BOLT - 3/8" - 16 x 1"	2
9	131-938	NUT - 3/8" flange	5
10	218-5201	FITTING - 7/8" O-ring x 1/2" pipe, 90°	2
11	218-5007	"O" RING	1
12	C32199	SCREW - set 5/16" - 18 x 5/16"	1
13	111-342	BOLT - 3/8" - 16 x 1" carriage	3
14	C31215	BELT - drive	1

## SPINDLES AND BLADES

1	NSS*	HOUSING - spindle (use C40722, 219-20 and (2) C16516)	3
1	C40722**	HOUSING - spindle	3
2	C28971	BEARING - spindle	6
3	C10810	SPACER - bearing	3
4	C25542	ADAPTER - blade	3
5	C31452	WASHER - 3/8" x 2"	3
6	192-21	LOCKWASHER - 3/8"	15
7	113-209	BOLT - 3/8" - 16 x 1-1/2"	3
8	C31566	SPINDLE - outboard	2
9	C29431	SPACER - spindle	3
10	C31572	BLADE - 17"	3
11	113-206	BOLT - 3/8" - 16 x 3/4"	12
12	C31560	SPINDLE - center (HRM48H)	1
12	C42440	SPINDLE - center (AHRM4H)	1
13	C25544	SHIELD - bearing	3
14	219-20**	FITTING - lubrication 1/4" - 28	3
15	C16519**	RING - retaining	6

\* Use before PIN 010602046

\*\* Use PIN 010602046 and after

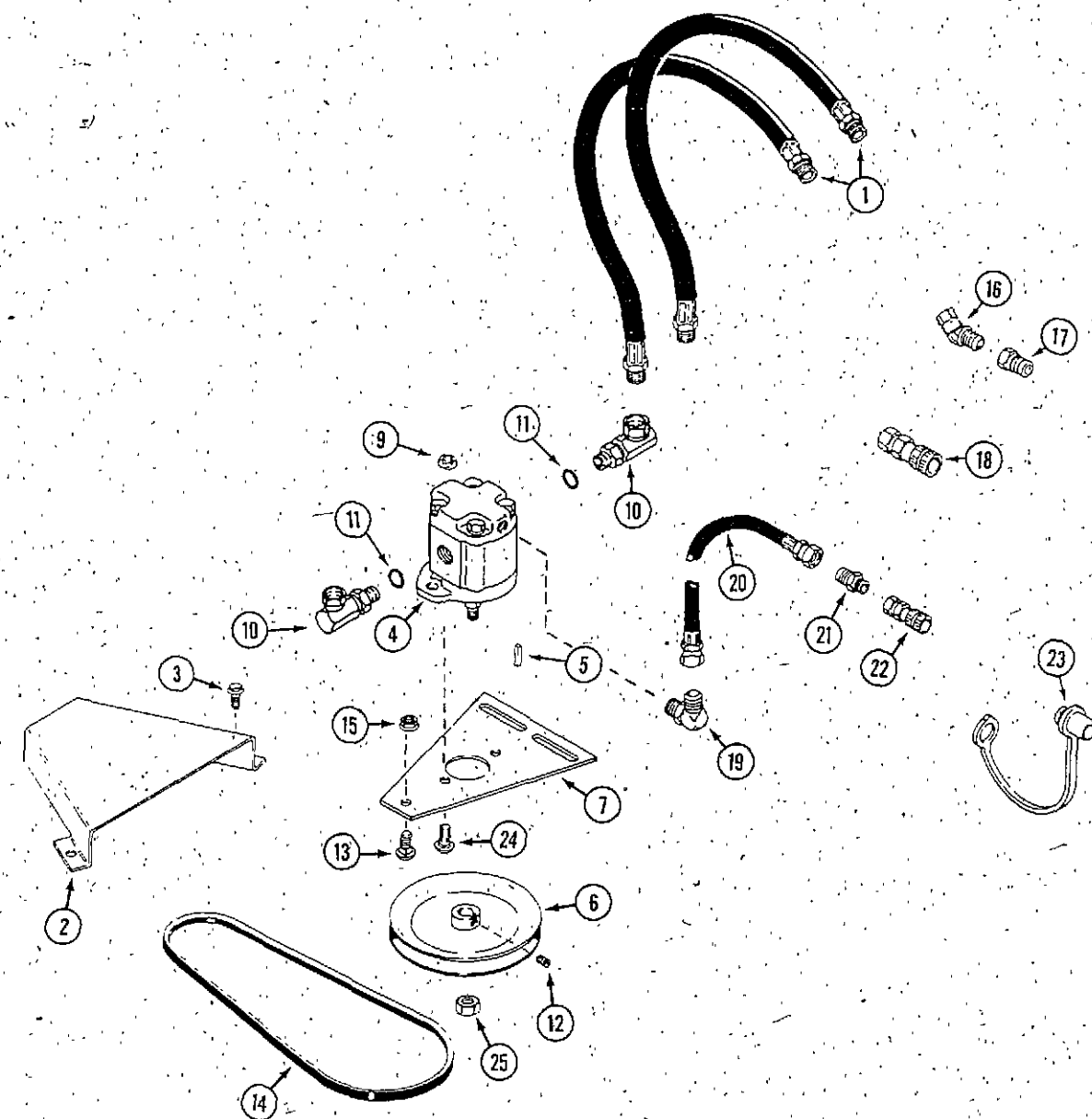


# **HYDRAULIC DRIVE** (HRM48H - PIN 010406094 to 010601046) (AHRM4H before PIN 010404153)

REF.	PART NO	DESCRIPTION	REQ'D
1	C28320	HOSE - hydraulic	2
2	C42452	COVER - drive belt	1
3	187-1036	SCREW - 1/4" - 20 x 1/2" self tap	3
4	NSS*	MOTOR - hydraulic	1
5	C40815	SEAL - shaft	1
6	C29581	KEY - motor shaft 3/16" x 3/16" x 1"	1
7	42436	PULLEY - 6.4 drive (AHRM4H)	1
8	C45490	PULLEY - 7" drive (HRM48H)	1
9	C42437	PLATE - motor mount	1
10	113-207	BOLT - 3/8" - 16 x 1"	2
11	131-1352	NUT - 3/8" flange	2
12	218-5201	FITTING - 7/8" O-ring x 1/2" pipe, 90°	2
13	218-5007	"O" RING	1
14	83-55	SCREW - set 5/16" - 18 x 5/16"	1
15	111-342	BOLT - 3/8" - 16 x 1" carriage	5
16	C31215	BELT - drive	1
17	131-938	NUT - 3/8" - 16 flange lock	3
18	217-1086	FITTING - 45° elbow 1/2"	1
19	C37187	COUPLING - quick, male 1/2"	1
20	C37188	COUPLING - quick, female 1/2"	1
21	218-5105	FITTING - 9/16" 90° (includes 218-5005 "O" RING)	1
22	C33560	HOSE - 1/4" x 23"	1
23	218-443	FITTING - 1/4" X 3/8"	1
	C41044	COUPLING - quick, female 1/4"	1
	C33404	CAP - dust	1

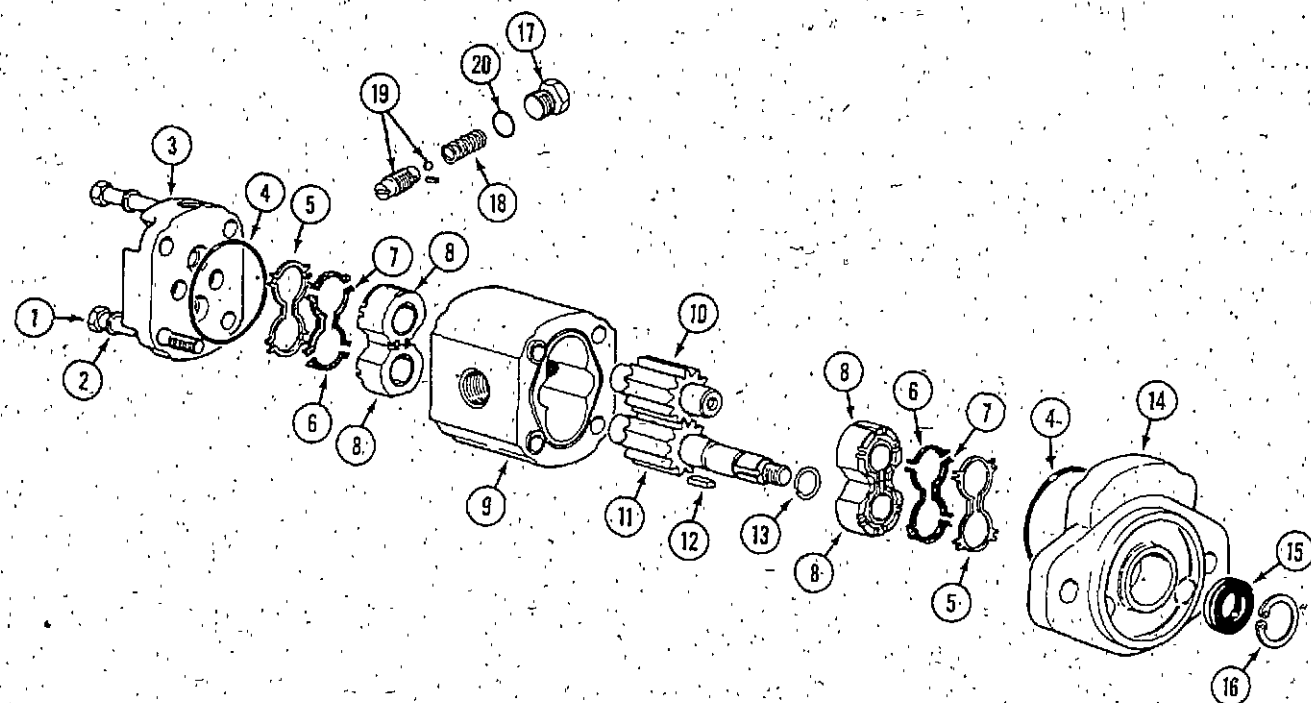
\* HRM48H use C46213 Kit  
 AHRM4H use C46214 Kit





# **HYDRAULIC DRIVE** **(HRM48H - PIN 010601048 and after)** **(AHRM4H - PIN 010404153 and after)**

REF.	PART NO.	DESCRIPTION	REQ'D
1	C28320	HOSE - hydraulic (HRM48H)	2
1	C42444	HOSE - 1/2" X 32" (AHRM4H)	2
2	C42452	COVER - drive belt	1
3	187-1036	SCREW - 1/4" - 20 x 1/2" self tap	3
4	C46235	MOTOR - hydraulic (repairs page 15)	1
5	C46237	KEY - motor shaft 3/16" x 1"	1
6	C46266	PULLEY - 7" drive (HRM48H)	1
7	C42437	PLATE - motor mount	1
8	113-207	BOLT - 3/8" - 16 x 1"	2
9	131-1352	NUT - 3/8" flange	2
10	218-5201	FITTING - 7/8" O-ring x 1/2" pipe, 90°	2
11	218-5007	"O" RING	1
12	83-55	SCREW - set 5/16" - 18 x 5/16"	1
13	111-342	BOLT - 3/8" 16 x 1" carriage	3
14	C31215	BELT - drive	1
15	131-938	NUT - 3/8" - 16 flange lock	3
16	217-1086	FITTING - 45° elbow 1/2"	1
17	C37187	COUPLING - quick, male 1/2"	1
18	C37188	COUPLING - quick, female 1/2"	1
19	218-5105	FITTING - 9/16", 90° (includes 218-5005 "O" ring)	1
20	C33560	HOSE - 1/4" x 23"	1
21	218-443	FITTING - 1/4" x 3/8"	1
22	C41044	COUPLING - quick, female 1/4"	1
23	C33404	CAP - dust	1
24	111-366	BOLT - 3/8" - 16 x 1-1/4" carriage	2
25	131-C5	NUT - 7/16" - 20 lock	1



## HYDRAULIC MOTOR

REF.	PART NO.	DESCRIPTION	REQ'D
1	NSS	BOLT	4
2	NSS	LOCKWASHER	4
3	NSS	COVER - end	1
4	NSS	"O" RING - body (included in seal kit)	2
5	NSS	SEAL - backup (included in seal kit)	2
6	NSS	SEALS - bushings (included in seal kit)	4
7	NSS	SEALS - bushings (included in seal kit)	4
8	NSS	BUSHING	4
9	NSS	BODY	1
10	NSS	GEAR - driven	1
11	NSS	SHAFT AND GEAR - drive	1
12	C46237	KEY - square 3/16" x 3/4" (included in seal kit)	1
13	NSS	RING - retaining (included in seal kit)	1
14	NSS	FLANGE - mounting	1
15	C43748	SEAL - oil (included in seal kit)	1
16	NSS	RING - retaining (included in seal kit)	1
17	NSS	CAP - check valve	1
18	NSS	SPRING - check valve (if required)	1
19	NSS	VALVE - check	1
20	NSS	"O" RING - cap (included in seal kit)	1
	C43747	KIT - seal	1

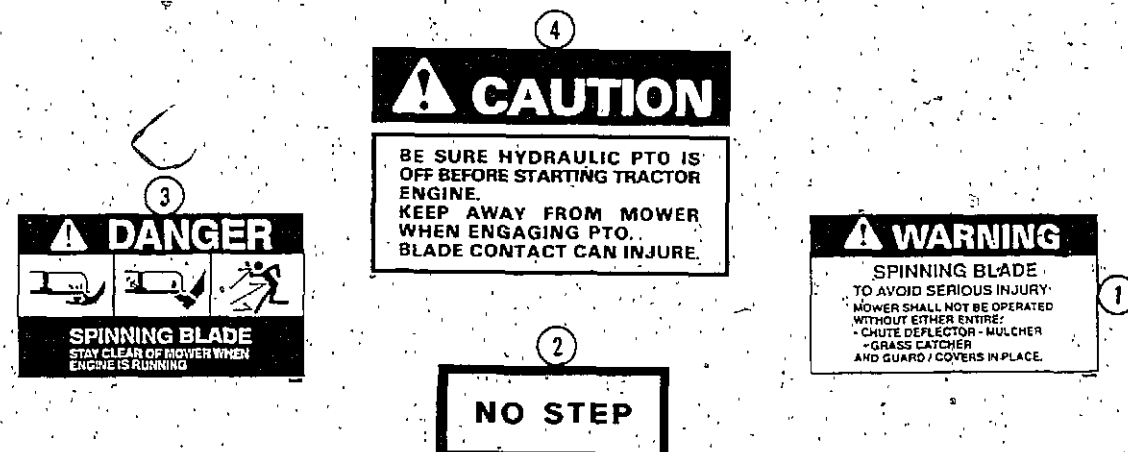


## PTO HANDLE STOP BRACKET

REF.	PART NO.	DESCRIPTION	REQ'D
1	C32327	STOP - handle (use with 3014 thru 4020 tractors)	1
2	113-3	BOLT - 1/4" - 20 x 3/4"	1
3	131-934	NUT - 1/4" - 20 flange lock	1
4	C32965	PLATE - spool stop (use with 6018 tractors)	1
5	C32966	PIN - clevis 3/16" x 7/16"	2
6	195-510	WASHER - 3/16" x 7/16"	2
7	132-320	PIN - cotter 3/32" x 1"	2

## DECALS

1	C46323	DECAL - "Spinning Blade"	1
2	C12519	DECAL - "No Step"	2
3	C46324	DECAL - "Warning"	1
4	C29769	DECAL - "Caution"	1



## NUMERICAL INDEX

C10810	9 3	C37187	13 17
C12251	5 7	C37188	11 18
C12519	17 2	C37188	13 18
C12975	7 11	C40722	9 1
C13106	7 7	C40815	11 1
C14768	5 19	C41044	11 22
C16128	7 4	C41044	13 22
C16519	9 15	C42436	11 6
C23950	5 2	C42437	11 7
C24503	7 13	C42437	13 7
C25542	9 4	C42440	9 12
C25544	8 13	C42444	13 1
C28105	7 9	C42452	11 2
C28222	7 11	C42452	13 2
C28222	7 6	C43747	15
C28266	7 8	C43748	15 15
C28320	9 1	C45490	11 6
C28320	11 1	C46235	13 4
C28320	13 1	C46237	13 5
C28971	9 2	C46237	15 12
C29431	9 9	C46265	13 6
C29581	9 5	C46266	13 6
C29581	11 5	C46323	17 1
C29590	7 18	C46324	17 3
C29625	9	083- 55	11 12
C29693	7 10	083- 55	13 12
C29769	17 4	111- 132	7 19
C30053	9	111- 342	9 13
C30562	7 8	111- 342	11 13
C30766	5 16	111- 342	13 13
C30768	5 17	111- 366	5 9
C30926	7 12	111- 366	13 24
C31215	9 14	111- 371	5 12
C31215	11 14	111- 375	5 13
C31215	13 14	113- 3	17 2
C31452	9 5	113- 206	9 11
C31497	5 3	113- 207	7 5
C31500	5 4	113- 207	9 8
C31501	5 5	113- 207	11 8
C31502	5 1	113- 207	13 8
C31505	5 18	113- 208	7 12
C31560	9 12	113- 209	9 7
C31566	9 8	113- 241	5 13
C31572	9 10	113- 412	7 13
C31606	5 6	113- 426	7 14
C31608	5 8	113- 436	7 16
C32199	9 12	129- 938	7 7
C32327	17 1	131- C5	13 25
C32535	9 6	131- 911	7 20
C32536	9 2	131- 930	7 17
C32743	7 15	131- 934	17 3
C32744	7 9	131- 938	5 14
C32751	9 7	131- 938	9 9
C32753	7 3	131- 938	11 15
C32756	7 1	131- 938	13 15
C32759	5 21	131- 1181	5 10
C32784	7 2	131- 1182	7 15
C32785	7 18	131- 1352	11 9
C32788	7 1	131- 1352	13 9
C32789	7 2	132- 320	17 7
C32790	7 3	187- 1036	5 15
C32791	7 4	187- 1036	9 3
C32965	17 4	187- 1036	11 3
C32966	17 5	187- 1036	13 3
C33209	7 46	192- 21	9 6
C33210	7 17	195- 105	5 20
C33404	11 23	195- 510	17 6
C33404	13 23	195- 525	5 11
C33560	11 20	195- 553	7 5
C33560	13 20	195- 2029	7 6
C37187	11 17	210- 10	7 14

217-1086	11 16
217-1086	13 16
218- 443	11 21
218- 443	13 21
218-5007	9 11
218-5007	11 11
218-5007	13 11
218-5105	11 19
218-5105	13 19
218-5201	9 10
218-5201	11 10
218-5201	13 10
219- 20	7 10
219- 20	9 14

# INGERSOLL

Ingersoll Equipment Co., Inc.